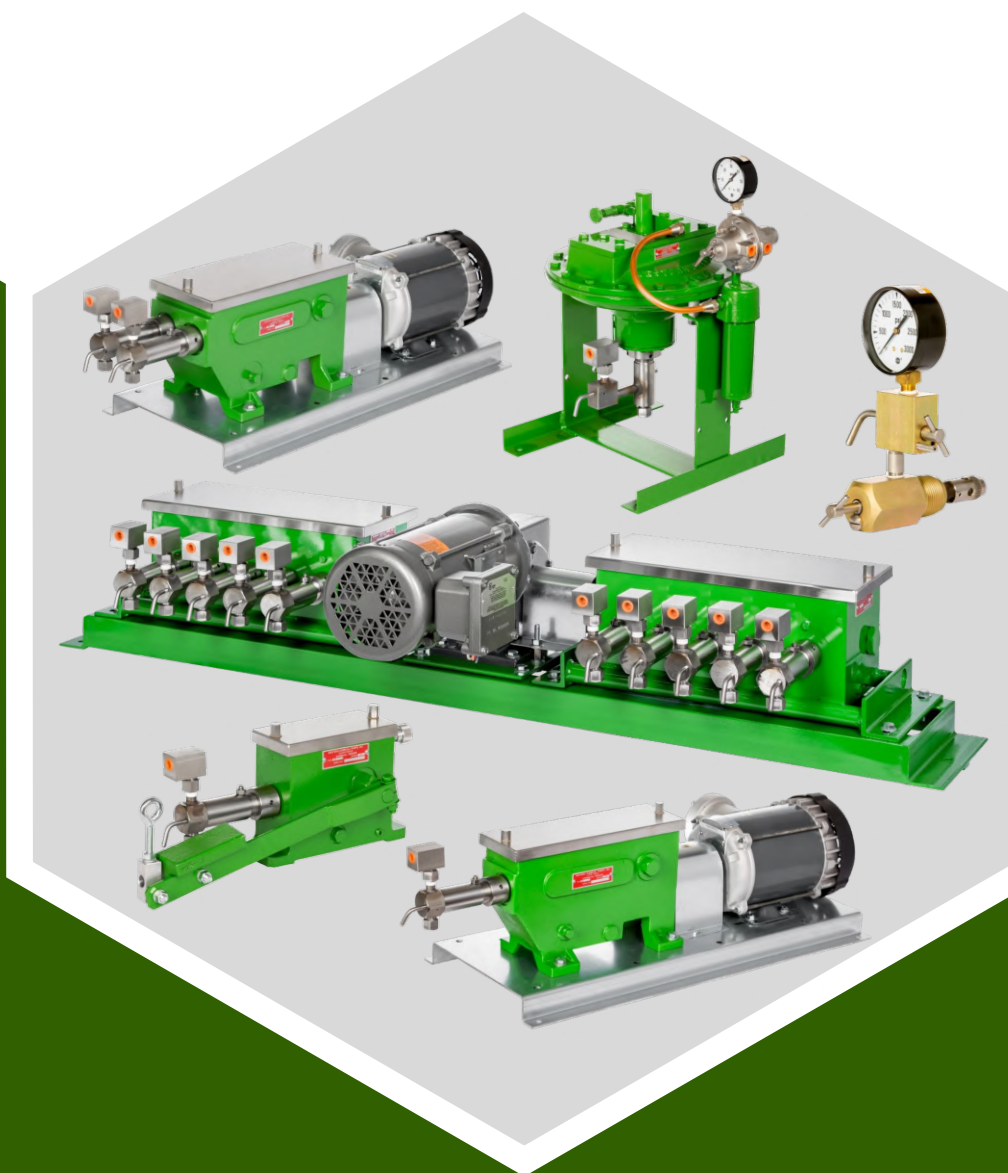


CHEMICAL INJECTION PUMPS

WESTERNTM

PRECISION · EFFICIENCY · RELIABILITY

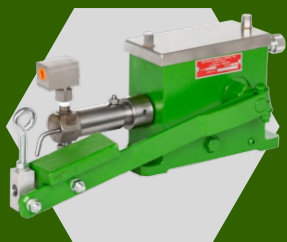


SERVING THE OIL AND GAS
INDUSTRY SINCE 1947



WESTERNCHEMICALPUMPS.COM

PRODUCT CATALOG



LD

LEVER DRIVEN - Single head, dial controlled flow rate, cable or rod connection to walking beam, low maintenance

PISTON DIA. (IN)	MAX PRESSURE (PSI)	FLOW RATE MIN - MAX (QTS / DAY)
3/16	2,000	0 - 7
1/4	1,125	0 - 13
3/8	500	0 - 30
5/8	180	0 - 86



MA

ELECTRIC MOTOR - Single head, flow rate control via adjustable stroke length and skip-a-stroke pin index wheel, intuitive design

1/4	6,750	0.3 - 42
3/8	3,000	0.6 - 95
5/8	1,500	1.6 - 264
1	400	42 - 675



MT

ELECTRIC MOTOR - Two heads, flow rate control via adjustable stroke length and skip-a-stroke pin index wheel, pump multiple chemicals, higher flow rates

1/4	6,750	0.3 - 84
3/8	3,000	0.6 - 190
5/8	1,500	1.6 - 528
1	400	42 - 1,350



MH

ELECTRIC MOTOR - 1 to 10 heads, dial controlled flow rate, designed for versatile pumping applications, add on heads as need arises

1-5 HD	1/4	4,500	0 - 120
	3/8	2,000	0 - 275
6-10 HD	1/4	2,250	0 - 240
	3/8	1,000	0 - 550



DFF

GAS DRIVEN - Single head, flow rate control via exhaust gas valve, proven reliable performance with precise flow rates

1/4	5,000	0.2 - 36
3/8	10,000	0.5 - 80
5/8	3,000	2 - 240
1	2,000	4 - 700



AN

ATOMIZING NOZZLES - Designed to function with best results on Western Chemical Pumps positive displacement pumps. Atomization of the injection chemical increases its effectiveness and promotes mixing. Multiple models available to fit many applications.

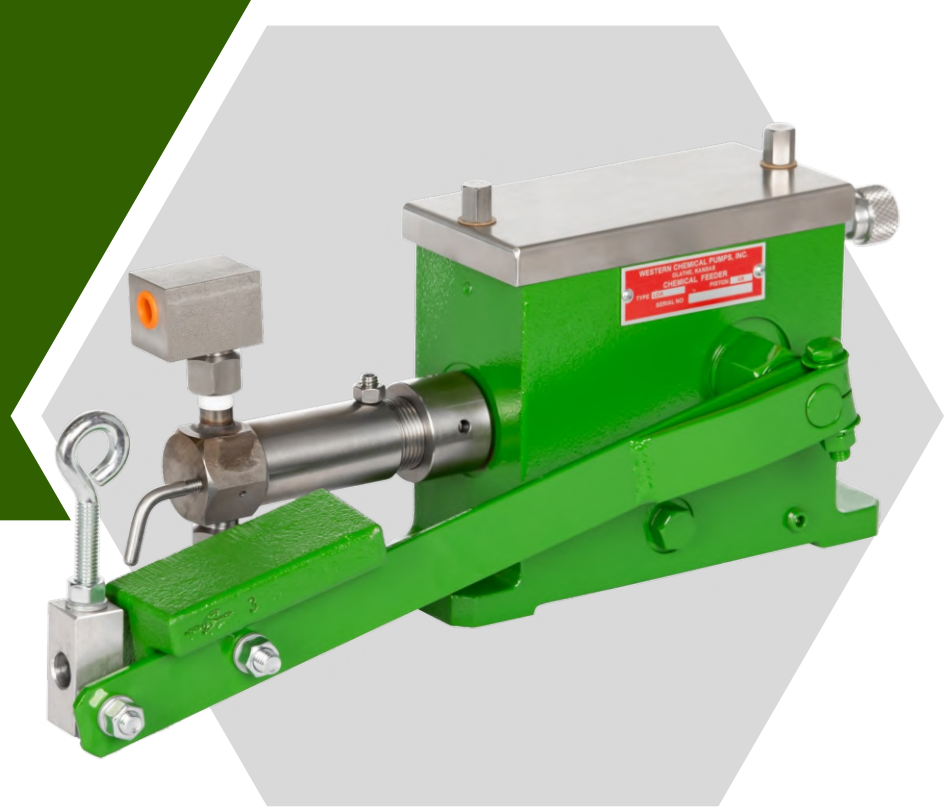
Western Chemical Pumps, Inc. offers a diverse range of products in various materials, providing numerous options to meet your specific chemical compatibility needs. We also offer additional products and accessories to enhance your setup. To learn more about our complete selection of products, please contact your Western Chemical Pumps, Inc. distributor.

CHEMICAL INJECTION PUMP

LEVER DRIVEN

SINGLE HEAD

LD



The model LD chemical injection pumps are designed to be driven by the motion of the walking beam. These positive displacement pumps have removable fluid ends with interchangeable check valves, and a removable stainless steel cover for easy maintenance on the drivetrain.

The pumps are available in various materials and piston sizes to meet your specific chemical injection requirements. They can also be equipped with chemical tanks and an optional I-beam base attachment for added versatility.

For decades, Western Chemical Pumps model LD pump has demonstrated reliable engineering and design, earning the trust of its users through rigorous testing and proven performance.

FEATURES

- ◆ Simple dial controlled chemical injection flow rate
- ◆ Rod, pipe, or cable connection to walking beam
- ◆ Double piston seals with vented isolation to prevent chemical blow-by into pump box
- ◆ All models include line check valve and walking beam connection assembly
- ◆ Stainless steel piston and check valves come standard for better reliability

WESTERN

TM



LD PUMP CONFIGURATIONS

LDA	3/8	#1	Y	PART NUMBER
↑	↑	↑	↑	Model
LDA				Lever Driven
				Piston Diameter
	3/16			3/16"
	1/4			1/4"
	3/8			3/8"
	5/8			5/8"
				Attachments
		#1		No Base, No Tank
		#1B		I-Beam Clamp Base
		#2		Tank with Base
				Fluid End Material
				Steel (standard)
			Y	Stainless Steel
			Q	316 Stainless Steel

OPTIONS & UPGRADES

Material: Upgrade to Y or Q models for enhanced corrosion resistance

Piston Size: Multiple sizes available to fit your required injection flow rates and pressures

Resilient Seat Check Valves: Added O-ring provides better sealing capability, which is ideal for low viscosity fluids, such as methanol

Packing Seals: Buna-N, EPDM, Neoprene, PTFE (Teflon™), FKM (Viton™)

Rope Packing: Graphite impregnated or PTFE (Teflon™) rope

Prime Ball: Ceramic or tungsten

Tank: Optional 5 gallon stainless steel tank

Clamp Base: Attach your pump to an I-beam

Cable: Optional cable to connect lever arm to walking beam (LD26-25)

Other unique or special order materials are available to fit your needs. Please inquire with your Western Chemical Pumps, Inc. distributor. Specify desired options when placing order.

PISTON DIA (IN)	MAX DISCHARGE PRESSURE (PSI)	FLOW RATE MIN - MAX (QTS / DAY)
3/16	2,000	0 - 7.6
1/4	1,125	0 - 13.6
3/8	500	0 - 30.8
5/8	180	0 - 86.0

STROKES PER MINUTE	FLOW RATE (QTS / DAY)							
	3/16" PISTON		1/4" PISTON		3/8" PISTON		5/8" PISTON	
	HALF STROKE	FULL STROKE	HALF STROKE	FULL STROKE	HALF STROKE	FULL STROKE	HALF STROKE	FULL STROKE
6	1.2	2.4	2.0	4.0	4.8	9.2	12.8	26.0
8	1.6	3.2	2.8	5.6	6.0	12.4	17.3	34.4
10	2.0	4.0	3.6	6.8	7.6	15.6	21.6	43.2
12	2.4	4.8	4.0	8.4	9.2	18.4	26.0	51.6
14	2.8	5.6	4.8	9.6	10.8	21.6	30.0	60.4
16	3.2	6.4	5.6	11.2	12.4	24.8	34.4	68.8
18	3.6	6.8	6.0	12.4	14.0	28.0	38.8	77.6
20	4.0	7.6	6.8	13.6	15.6	30.8	43.2	86.0



Pictured with 5 gallon tank option

PISTON DIA (IN)	FLOW RATE (QTS / DAY)
3/16	= 0.0194 x SPM x ROT
1/4	= 0.0344 x SPM x ROT
3/8	= 0.0774 x SPM x ROT
5/8	= 0.2150 x SPM x ROT

SPM: Piston strokes per minute

ROT: Number of feed control knob counterclockwise rotations

CAUTION

ENERGY STORED IN COMPRESSED SPRING CAN RELEASE CAUSING SEVERE INJURY. USE CAUTION WHEN DISASSEMBLING PUMP.

ENSURE CHECK VALVE FLOW IS IN THE DIRECTION OF THE ARROW. INCORRECT DIRECTION COULD CAUSE PUMP TO OVER PRESSURE.

INSTALLATION & OPERATION

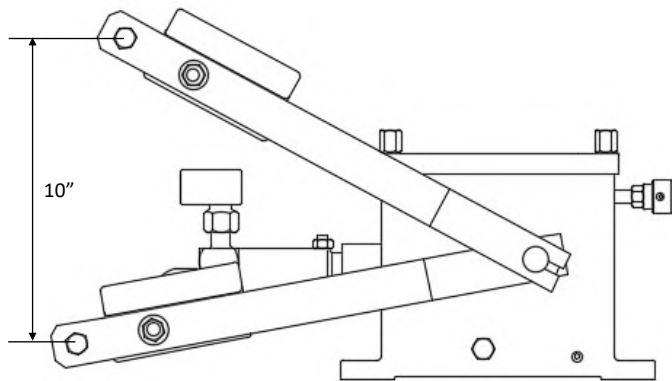
Bolt pump securely to concrete pad or platform. Position the pump to allow a straight upward pull on the pump lever as the walking beam rises.

Attach the beam clamp assembly (LD24/25) to the walking beam. Position for approximately 10 inches of total travel measured at the end of the pump lever.

Connect the pump lever to the beam clamp assembly using a cable through the eye bolts. When cable is used, ensure lever weight (LD11-2) is attached to keep cable taught. Alternatively, connect using a 1/4" - 1/2" pipe or rod through the holes in the swivel blocks. Lock pipe in place using eye bolts as setscrews.

Fill gearbox with 1-1/4 quarts SAE 20 or SAE 30 oil to partially submerge the pump cam and piston.

Connect the suction and discharge lines to the fluid end. Turn the flow rate control dial counterclockwise (out) to the stop. Open prime valve (D16-2Y) on the fluid end. Repeatedly stroke piston by lifting and lowering the pump lever. When a continuous flow of chemical begins to exit the bleed hole, close the prime valve.



FLOW RATE CONTROL

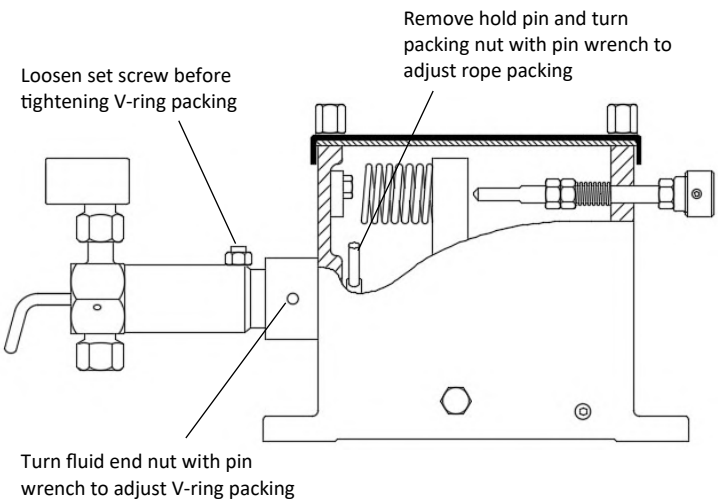
The rate can be adjusted from no stroke to full stroke in fine increments by rotating the flow control dial. The flow rate is dependent on the flow control dial setting and the strokes per minute of the piston. Rotate the flow control dial clockwise (in) to decrease the flow rate and counterclockwise (out) to increase the flow rate.

To set an approximated flow rate, turn feed control dial clockwise (in) to the stop. Every rotation counterclockwise (out) will increase the feed rate. By counting the number of counterclockwise rotations and using the provided flow rate tables, an approximate flow rate can be set. There are 20 rotations of the flow control dial from no stroke to full stroke of the piston.

MAINTENANCE & TROUBLESHOOTING

Chemical Leakage: This can be detected by chemical leaking around the fluid end nut (LD12-4B). To correct this issue, tighten the V-ring packing (D12B). First, loosen the setscrew (LD12-2) and nut (D47-1A) on top of the fluid end. Using the supplied packing wrench (D44-3), insert in holes of fluid end nut and rotate. Hold fluid end upright while rotating the fluid end nut. The rotation will compress the V-ring packing around the piston. Tighten the setscrew and nut on top of the fluid end. Overtightening the V-ring packing can prevent the piston from completing a full stroke.

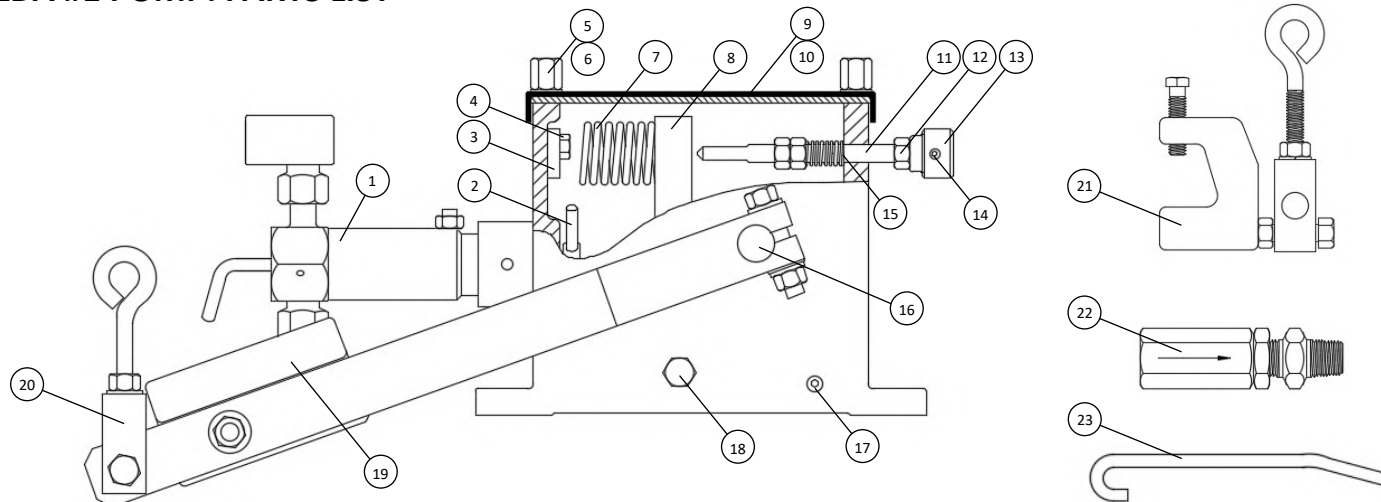
Preventing Pump Box Oil Leakage Into Fluid End: This can be detected by oil leaking around the fluid end nut (LD12-4B). To correct this issue, tighten the rope packing (LD15-1). First, remove the cover (LD2-2A) of the pump. Remove the hold pin (LD15-3) from the packing nut (LD15Y) inside the pump box. Using the supplied packing wrench (D44-3), insert in holes of packing nut and rotate. Do not overtighten rope packing.



TIPS FOR BEST OPERATION

- Plan ahead for proper pump mounting location
- Short flooded suction lines and clean chemicals with no debris perform best
- Chemical lines should be rigid and have no abrupt change in elevation to prevent trapping gas bubbles
- Fluid end must be vertical for ball check valves to operate properly
- Keep oil clean and at the recommended fill level to partially submerge piston

LDA #1 PUMP: PARTS LIST



LDA #1							
1 FLUID END ASSY	***	8 YOKE ASSY	LD5MZ	15 SPRING	LD7-2A	22 LINE CHECK VALVE	D461
2 HOLD PIN	LD15-3	9 COVER	LD2-2A	16 CAMSHAFT ASSY	LD8Z	23 PACKING WRENCH	D44-3
3 SLUG	LD10-1	10 GASKET	LD2-3	17 DRAIN PLUG	LD2P	NOT PICTURED	
4 BOLT	LD10-2	11 CONTROL SCREW	LD7	18 PIVOT SHAFT	LD5-1		
5 THUMB SCREW	LD23-2	12 NUT	D1-2A	19 WEIGHT ASSY	LD11-2Z		
6 GASKET	LD23-2A	13 KNOB	LD7-1	20 SWIVEL BLOCK ASSY	LD25Z		
7 SPRING	LD100	14 SETSCREW	LD7-1A	21 BEAM CLAMP ASSY	LD24/25	BUSHING	LD2BB**
						KNOCKOUT DISC	LD2BD**
						CABLE, 25FT	LD26-25*

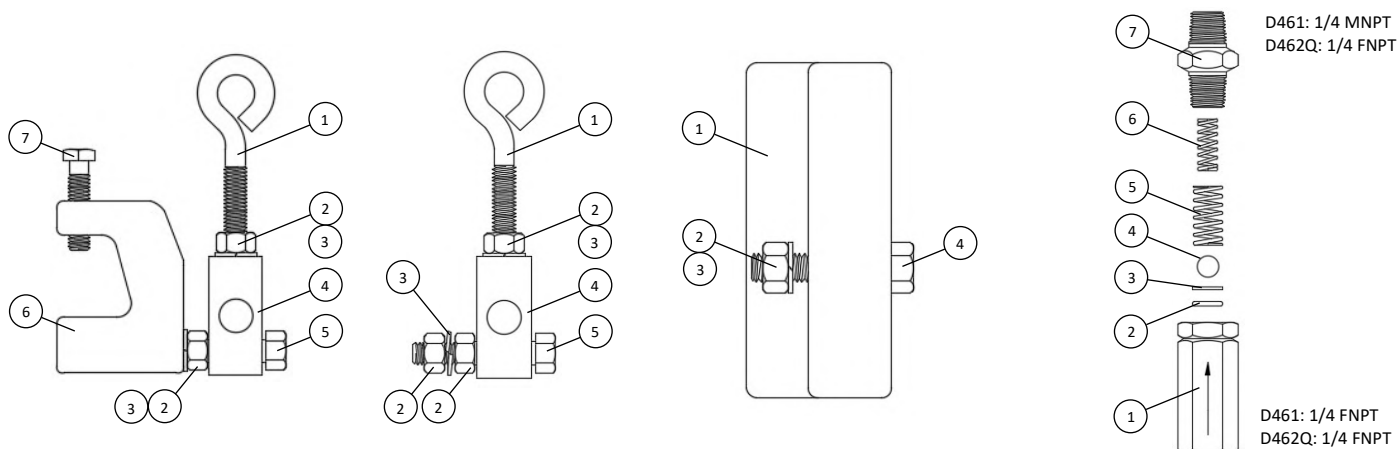
*** See subassembly drawing for part number

** Location: pressed into pump box to support LD8Z rotation

* Optional equipment

Subassembly detail shown in following drawings

LDA #1 PUMP: SUBASSEMBLIES



BEAM CLAMP ASSY LD24/25	
1 EYE BOLT	LD25-1
2 NUT	D1-2A
3 LOCK WASHER	M4L
4 SWIVEL BLOCK	LD25
5 CAP SCREW	LD24-2
6 BEAM CLAMP	LD24
7 SETSCREW	LD24-1

SWIVEL BLOCK ASSY LD25Z	
1 EYE BOLT	LD25-1
2 NUT	D1-2A
3 LOCK WASHER	M4L
4 SWIVEL BLOCK	LD25
5 CAP SCREW	LD24-2

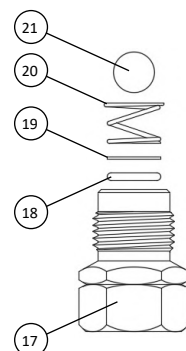
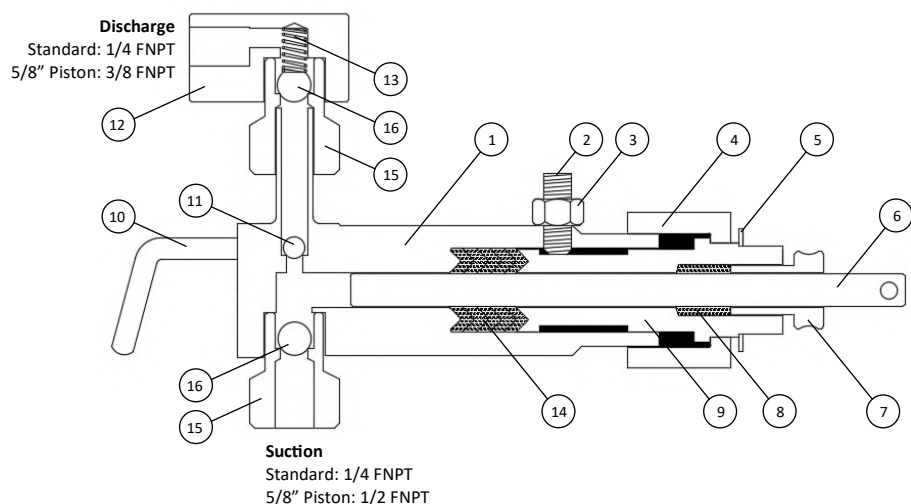
WEIGHT ASSY LD11-2Z	
1 WEIGHT	LD11-2
2 NUT	D1-2A
3 LOCK WASHER	M4L
4 CAP SCREW	LD24-2

LINE CHECK VALVE		
	D461	D462Q
1 BODY / CAGE	D461B	D176BQ
2 O-RING, TEFLON™	M170-55T*	D170-5T*
3 RING	D461R	D177
4 BALL, CERAMIC	D17-5C	D17-6C
5 SPRING	D461S	D178
6 SPRING	D18-1Y	D462SQ
7 NIPPLE / BODY	D461A	D462BFQ

*Alternate materials: Buna-N, Viton™, Neoprene, EPDM

All images are for illustrative purposes. Actual product may differ.

LDA #1 PUMP: SUBASSEMBLIES CONTINUED



UPGRADE:
Resilient check valve improves sealing capability on low viscosity fluids such as methanol

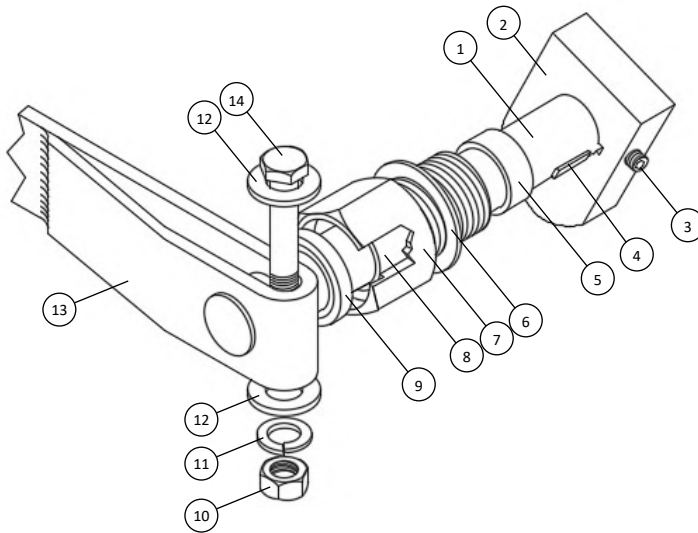
PISTON DIA (IN)	3/16	1/4			3/8			5/8	
MATERIAL	Standard	Standard	Y	Q	Standard	Y	Q	Y	Q
LD FLUID END ASSY	LD163Z1	LD164Z1	LD164Z1Y	LD164Z1Q	LD160Z1	LD160Z1Y	LD160Z1Q	LD165Z1Y	LD165Z1Q
1 FLUID END BODY	LD163	LD164	LD164Y	LD164Q	LD160	LD160Y	LD160Q	M161Y	M161Q
2 SETSCREW	LD12-2	LD12-2	LD12-2Q	LD12-2Q	LD12-2	LD12-2Q	LD12-2Q	LD12-2Q	LD12-2Q
3 NUT	D47-1A	D47-1A	D47-1AQ	D47-1AQ	D47-1A	D47-1AQ	D47-1AQ	D47-1AQ	D47-1AQ
4 FLUID END NUT	LD12-4B	LD12-4B	LD12-4BY	LD12-4BQ	LD12-4B	LD12-4BY	LD12-4BQ	M121-4BY	M121-4BQ
5 GASKET	LD12-1	LD12-1	LD12-1	LD12-1	LD12-1	LD12-1	LD12-1	M121-1	M121-1
6 PISTON	LD143Y	LD144Y	LD144Y	LD144Q	LD14Y	LD14Y	LD14Q	LD145Y	LD145Q
7 ROPE PACKING NUT	LD15Y	LD15Y	LD15Y	LD15Q	LD15Y	LD15Y	LD15Q	M151Y	M151Q
8 ROPE PACKING, GRAPHITE	LD15-1	LD15-1	LD15-1	LD15-1*	LD15-1	LD15-1	LD15-1*	M151-1	M151-1*
8 ROPE PACKING, TEFLON™	LD15-1T*	LD15-1T*	LD15-1T*	LD15-1T	LD15-1T*	LD15-1T*	LD15-1T	M151-1T*	M151-1T
9 CYLINDER	LD124-4AY	LD124-4AY	LD124-4AY	LD124-4AQ	LD12-4AY	LD12-4AY	LD12-4AQ	M121-4AY	M121-4AQ
10 PRIME VALVE	D16-2Y	D16-2Y	D16-2Y	D16-2Q	D16-2Y	D16-2Y	D16-2Q	D16-2Y	D16-2Q
11 PRIME BALL, CERAMIC	D17-4C	D17-4C	D17-4C	D17-4C	D17-4C	D17-4C	D17-4C	D17-6C	D17-6C
11 PRIME BALL, TUNGSTEN	D17-4T*	D17-4T*	D17-4T*	D17-4T*	D17-4T*	D17-4T*	D17-4T*	D17-6T*	D17-6T*
12 SQUARE ELL	D170-4	D170-4	D170-4Y	D170-4Q	D170-4	D170-4Y	D170-4Q	M171-4Y	M171-4Q
13 SPRING	D18-1Y	D18-1Y	D18-1Y	D18-1Y	D18-1Y	D18-1Y	D18-1Y	M181-1Y	M181-1Y
14 V-RING PACKING	HTH	HHHHH	BTBTB	VTVTV	HHHHH	BTBTB	VTVTV	TBSB	TVSV
PACKING, EPDM (B)	-	D124B*	D124B (3)	D124B*	D12B*	D12B (3)	D12B*	D121B (2)	D121B*
PACKING, BUNA-N (H)	D136H (2)	D124H (5)	D124H*	D124H*	D12H (5)	D12H*	D12H*	D121H*	D121H*
PACKING, NEOPRENE (N)	-	D124N*	D124N*	D124N*	D12N*	D12N*	D12N*	D121N*	D121N*
PACKING, TEFLON™ (T)	D136T (1)	D124T*	D124T (2)	D124T (2)	D12T*	D12T (2)	D12T (2)	D121T (1)	D121T (1)
PACKING, VITON™ (V)	-	D124V*	D124V*	D124V (3)	D12V*	D12V*	D12V (3)	D121V*	D121V (2)
SPACER (S)	-	-	-	-	-	-	-	LD121Y (1)	LD121Q (1)
CHECK VALVE	-	D17Y	D17Y	D17Q	D17Y	D17Y	D17Q	D172Y	D172Q
15 CAGE	-	D17BY	D17BY	D17BQ	D17BY	D17BY	D17BQ	D172B	D172BQ
16 CHECK BALL, CERAMIC	-	D17-6C	D17-6C	D17-6C	D17-6C	D17-6C	D17-6C	D171-2C	D171-2C
16 CHECK BALL, TUNGSTEN	-	D17-6T*	D17-6T*	D17-6T*	D17-6T*	D17-6T*	D17-6T*	D171-2T*	D171-2T*
RESILIENT CHECK VALVE	D179ZYT	D176ZYT*	D176ZYT*	D176ZQT*	D176ZYT*	D176ZYT*	D176ZQT*	D172ZYT*	D172ZQT*
17 CAGE	D179B	D176B	D176B	D176BQ	D176B	D176B	D176BQ	D172B	D172BQ
18 O-RING, TEFLON™	M170-55T**	D170-5T**	D170-5T**	D170-5T**	D170-5T**	D170-5T**	D170-5T**	D171-8T**	D171-8T**
19 RING	D181	D177	D177	D177	D177	D177	D177	D173	D173
20 SPRING	D182	D178	D178	D178	D178	D178	D178	D174	D174
21 CHECK BALL, CERAMIC	D17-5C	D17-6C	D17-6C	D17-6C	D17-6C	D17-6C	D17-6C	D171-2C	D171-2C
21 CHECK BALL, TUNGSTEN	D17-5T*	D17-6T*	D17-6T*	D17-6T*	D17-6T*	D17-6T*	D17-6T*	D171-2T*	D171-2T*

*Optional equipment, please specify when ordering

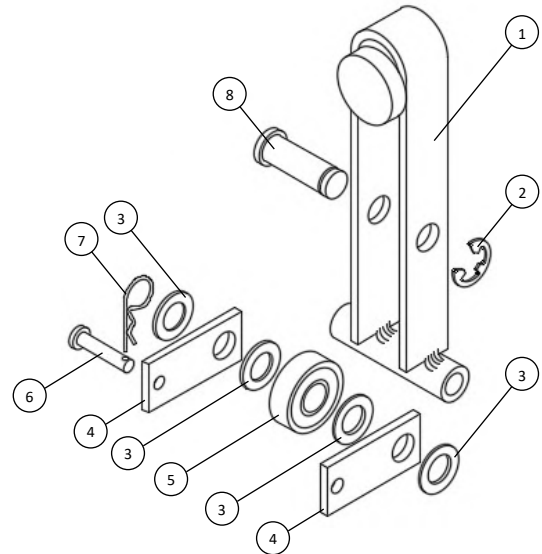
**Alternate materials: Buna-N, Viton™, Neoprene, EPDM

All images are for illustrative purposes. Actual product may differ.

LDA #1 PUMP: SUBASSEMBLIES CONTINUED



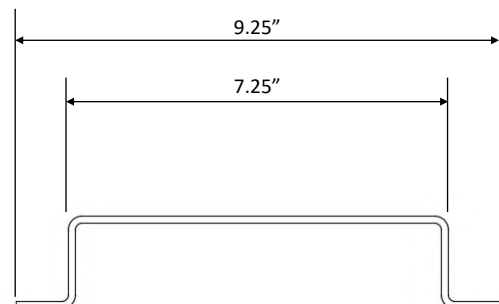
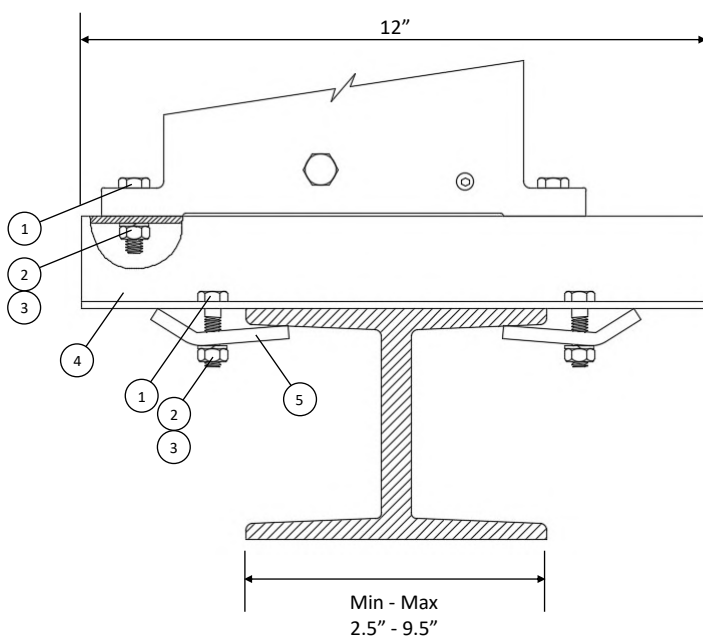
CAMSHAFT ASSY		LD8Z	
1	CAMSHAFT	LD8K-1	8 BUSHING
2	CAM	LD8-1K	9 LIP SEAL
3	SETSCREW	LD8-4	10 NUT
4	KEY	LD8-5	11 LOCK WASHER
5	SPACER	LD8-2	12 WASHER
6	GASKET	LD12-1	13 LEVER
7	SEAL HOUSING	LD9A-1	14 CAPSCREW
			LD2BB
			LD9S
			D1-2A
			M4L
			D21-2
			LD11
			LD24-2



YOKE ASSY		LD5MZ	
1	YOKE	LD5M	5 BEARING
2	RETAINING RING	M20D4	6 PIN
3	SPACER	LD5-3M	7 COTTER PIN
4	LINK	LD13M	8 SHAFT
			LD6M
			LD13-1
			LD13-2
			LD5-2M

LDA #1B PUMP: PARTS LIST

Includes all parts from LDA #1



LDA #1B	
CLAMP BASE ASSY	LD1CZ
1	BOLT
2	NUT
3	LOCK WASHER
4	BASE
5	CLAMP
	D23-2
	D47-1A
	D47-1L
	LD1C5
	LD1C1

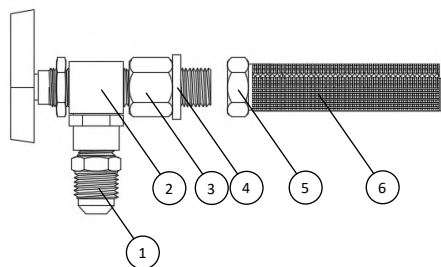
All images are for illustrative purposes. Actual product may differ.

LDA #2 PUMP: PARTS LIST

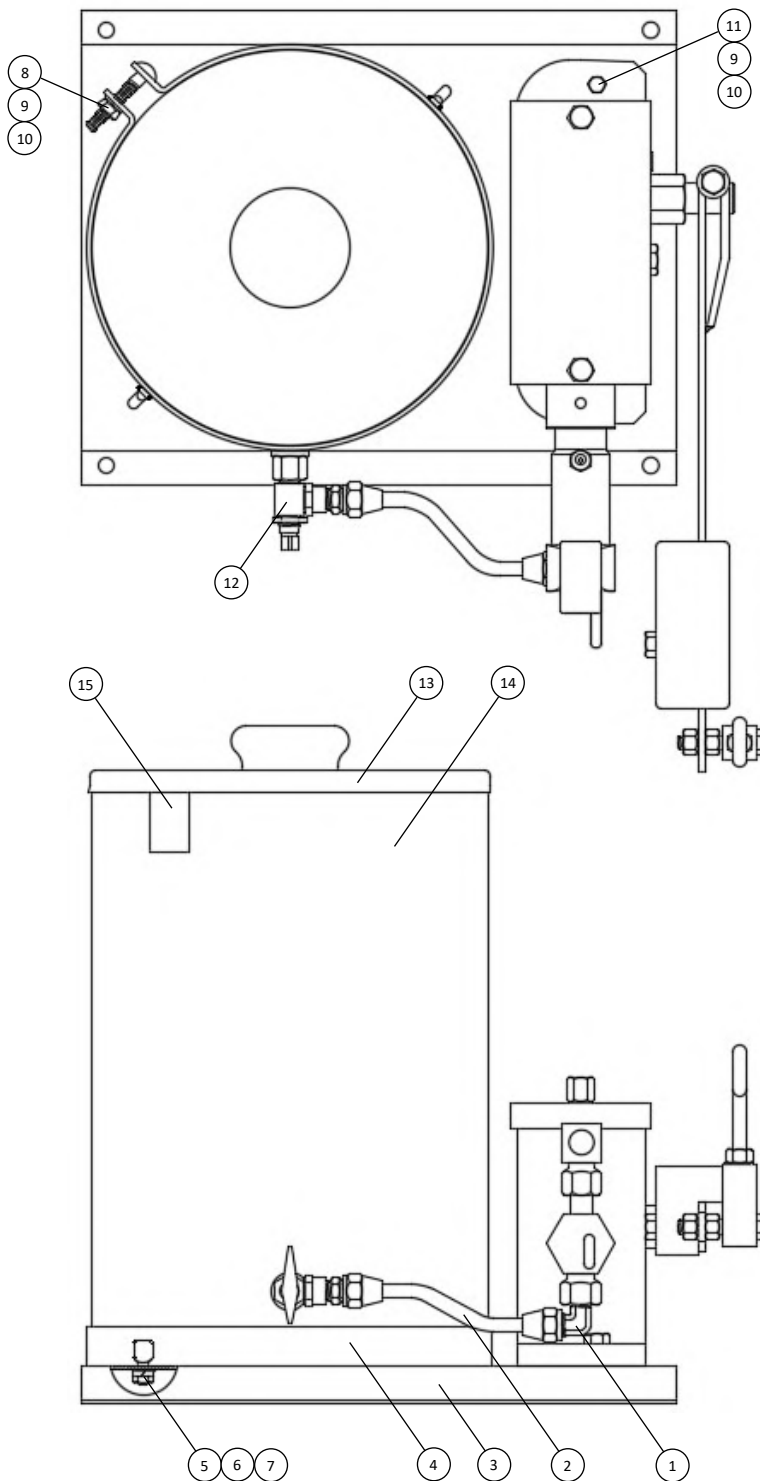
Includes all parts from LDA #1

LDA #2		
1	ELL	D17-3
2	TUBE ASSY	D34
BASE ASSY LD4Z		
3	BASE	LD4B
4	TANK BAND	LD4R
5	NUT	M26-1B
6	LOCK WASHER	M26-1L
7	WASHER	M5-3
8	BOLT	D47-1C
9	NUT	D47-1A
10	LOCK WASHER	D47-1L
11	BOLT	D23-2
TANK ASSY D48ZY		
12	TANK VALVE ASSY	D29
12	TANK VALVE ASSY	D29Y*
13	TANK LID WITH KNOB	D48-1Y
14	TANK	D48Y
15	GAUGE STICK	D49
NOT PICTURED		
	LEVEL SIGHT GAUGE	929-1-S*

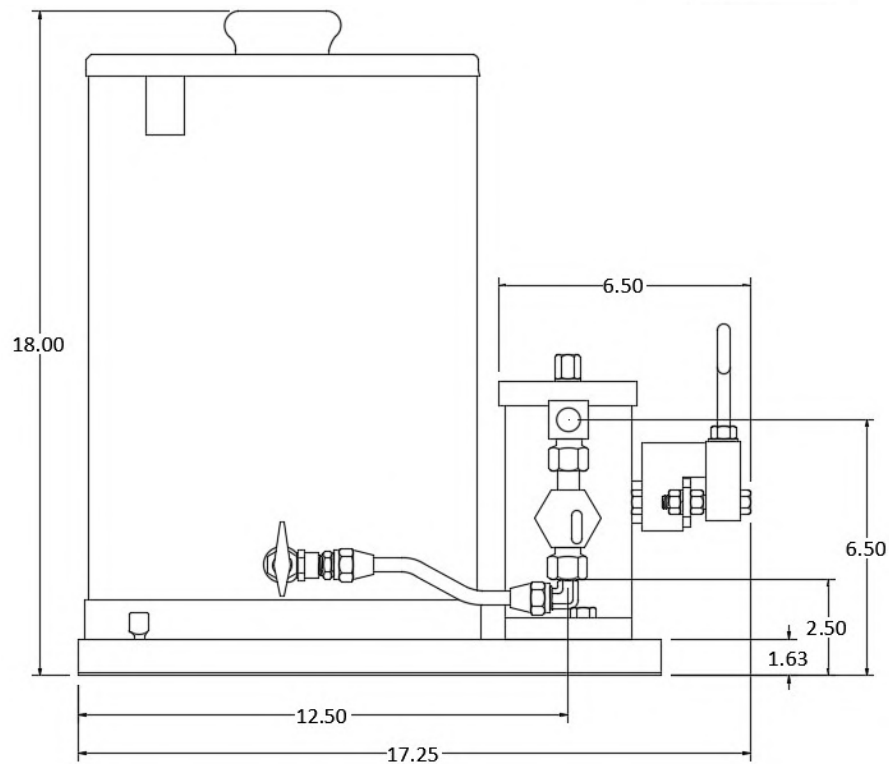
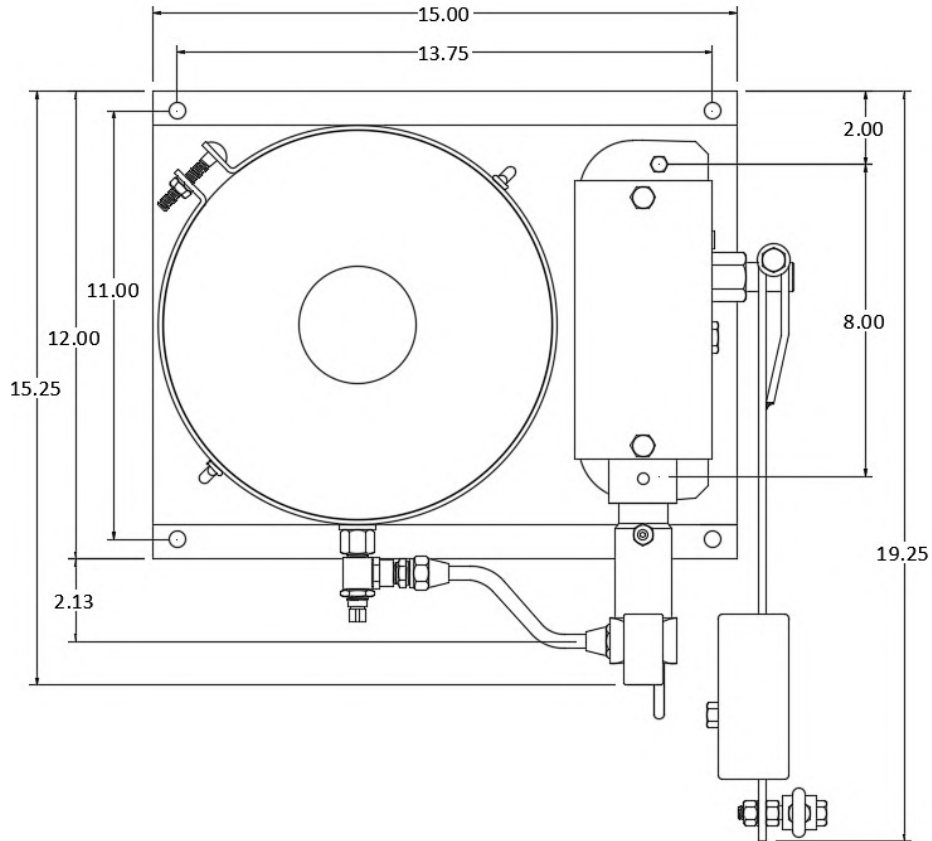
*Optional equipment



TANK VALVE ASSY	D29	D29Y
1	ADAPTER	D32-2
2	BALL VALVE	D29V
3	ADAPTER	D29A
4	GASKET	D28-8
5	NUT	D28-4Y
6	STRAINER	D28-3



All images are for illustrative purposes. Actual product may differ.



Western Chemical Pumps, Inc.
603 South Kansas Avenue, Olathe, KS 66061
913 - 829 - 1888 | sales@westernchemicalpumps.com

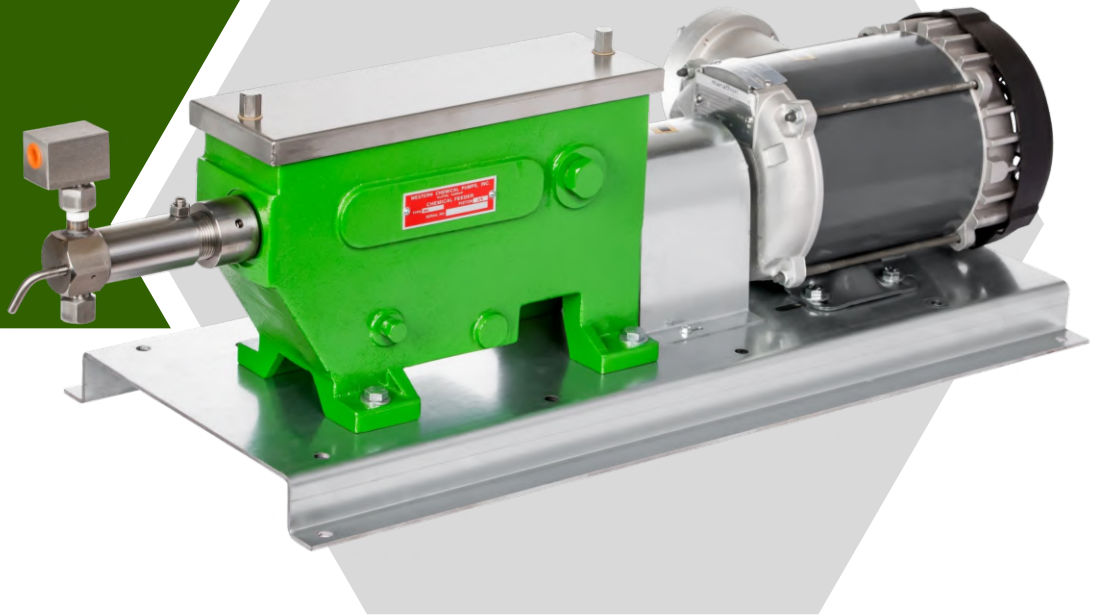
Dimensions are in inches. Actual product may have variance in measurements.
 All images are for illustrative purposes. Actual product may differ.

Western Chemical Pumps, Inc. reserves the right to make changes in specifications and features shown herein, or discontinue the product described at any time without notice or obligation. Contact your Western Chemical Pumps, Inc. distributor for the most current information.

CHEMICAL INJECTION PUMP

MOTOR DRIVEN

SINGLE HEAD



MA

The model MA chemical injection pumps are designed to be driven by an electric motor. These positive displacement pumps have removable fluid ends with interchangeable check valves, and a removable stainless steel cover for easy maintenance on the drivetrain.

The pumps are available in various materials and piston sizes to meet your specific chemical injection requirements. They can also be equipped with chemical tanks and index wheels to provide simple flow rate control.

For decades, Western Chemical Pumps model MA pump has demonstrated reliable engineering and design, earning the trust of its users through rigorous testing and proven performance.

FEATURES

- ◆ Single fluid end pump
- ◆ Index wheel allows easy flow rate control by skipping strokes to inject the precise amount desired
- ◆ Adjustable stroke length to fine tune injection flow rates
- ◆ Double piston seals with vented isolation to prevent chemical blow-by into pump box
- ◆ Capable of injecting up to 5,000 psi
- ◆ Stainless steel piston and check valves come standard for better reliability

WESTERNTM



MA.10.2023

WESTERNCHEMICALPUMPS.COM

MA - 1

MA PUMP CONFIGURATIONS

MA	3/8	#2	Y	PART NUMBER
↑	↑	↑	↑	Model
MA				Electric Motor, Single Head
				Piston Diameter
	1/4			1/4" (Includes Index Wheel)
	3/8			3/8" (Includes Index Wheel)
	5/8			5/8" (No Index Wheel)
	1			1" (No Index Wheel)
				Attachments
		#2		No Tank
		#3		Tank
				Fluid End Material
			Y	Steel (standard)
			Q	303 Stainless Steel
				316 Stainless Steel

MAS	5/8	#2	Y	PART NUMBER
↑	↑	↑	↑	Model
MAS				Electric Motor, Single Head
				Piston Diameter
	5/8			5/8" (Includes Index Wheel)
	1			1" (Includes Index Wheel)
				Attachments
		#2		No Tank
		#3		Tank
				Fluid End Material
			Y	Stainless Steel
			Q	316 Stainless Steel

OPTIONS & UPGRADES

Material: Upgrade to Y or Q models for enhanced corrosion resistance

Piston Size: Multiple sizes available to fit your required injection flow rates and pressures

Resilient Seat Check Valves: Added O-ring provides better sealing capability, which is ideal for low viscosity fluids, such as methanol

Packing Seals: Buna-N, EPDM, Neoprene, PTFE (Teflon™), FKM (Viton™)

Rope Packing: Graphite impregnated or PTFE (Teflon™) rope

Prime Ball: Ceramic or tungsten

Tank: Optional 5 gallon stainless steel tank

Index Wheel: MA 1/4" and 3/8" pumps come standard with an index wheel. MA 5/8" and 1" pumps require an upgrade to the MAS model to include an index wheel. The index wheel has 10 easily adjustable pins allowing flow rate control by skipping strokes.

Motors: Multiple motor models available to fit your power supply

Pulley Driven: Option to replace the motor for a pulley, if an existing power drivetrain is available

Coupler: Option available that is ideal for cold weather environments

Other unique or special order materials are available to fit your needs. Please inquire with your Western Chemical Pumps, Inc. distributor. Specify desired options when placing order.

PISTON DIA (IN)	MAX DISCHARGE PRESSURE (PSI)	FLOW RATE MIN - MAX (QTS / DAY)
1/4	5,000	0.3 - 42.2
3/8	3,000	0.6 - 95.0
5/8	1,100	1.6 - 263.9
1	400	42.2 - 675.6

FLOW RATE (QTS / DAY)					
PISTON	INDEX PINS "IN"	STROKE LENGTH			
		1	11/16	5/16	1/16
1/4	0	42.2	29.0	13.2	2.6
	1	38.0	26.1	11.9	2.4
	2	33.8	23.2	10.6	2.1
	3	29.6	20.3	9.2	1.8
	4	25.3	17.4	7.9	1.6
	5	21.1	14.5	6.6	1.3
	6	16.9	11.6	5.3	1.1
	7	12.7	8.7	4.0	0.8
	8	8.4	5.8	2.6	0.5
	9	4.2	2.9	1.3	0.3
3/8	0	95.0	65.3	29.7	5.9
	1	85.5	58.8	26.7	5.3
	2	76.0	52.3	23.8	4.8
	3	66.5	45.7	20.8	4.2
	4	57.0	39.2	17.8	3.6
	5	47.5	32.7	14.8	3.0
	6	38.0	26.1	11.9	2.4
	7	28.5	19.6	8.9	1.8
	8	19.0	13.1	5.9	1.2
	9	9.5	6.5	3.0	0.6
5/8	0	263.9	181.4	82.5	16.5
	1	237.5	163.3	74.2	14.8
	2	211.1	145.2	66.0	13.2
	3	184.7	127.0	57.7	11.5
	4	158.4	108.9	49.5	9.9
	5	132.0	90.7	41.2	8.2
	6	105.6	72.6	33.0	6.6
	7	79.2	54.4	24.7	4.9
	8	52.8	36.3	16.5	3.3
	9	26.4	18.1	8.2	1.6
1	0	675.6	464.5	211.1	42.2
	1	608.1	418.1	190.0	38.0
	2	540.5	371.6	168.9	33.8
	3	473.0	325.2	147.8	29.6
	4	405.4	278.7	126.7	25.3
	5	337.8	232.3	105.6	21.1
	6	270.3	185.8	84.5	16.9
	7	202.7	139.4	63.3	12.7
	8	135.1	92.9	42.2	8.4
	9	67.6	46.5	21.1	4.2

CAUTION

3 PHASE MOTORS REVERSE DIRECTION WHEN POWER WIRES ARE INTERCHANGED. CHECK ROTATION OF MOTOR IMMEDIATELY AFTER ANY ELECTRICAL MODIFICATIONS.

ENSURE PUMP IS ELECTRICALLY ISOLATED WITH PROPER LOCKOUT / TAGOUT PROCEDURES PRIOR TO PERFORMING WORK.

ENSURE CHECK VALVE FLOW IS IN THE DIRECTION OF THE ARROW. INCORRECT DIRECTION COULD CAUSE PUMP TO OVER PRESSURE.

INSTALLATION & OPERATION

Securely mount base (M1) to concrete pad or platform. Ensure motor and pump shaft remain in alignment during installation. Misalignment could cause premature wear on coupler and bearings.

Fill the pump box with 2-1/2 quarts SAE 20 or SAE 30. The oil level should partially submerge the piston.

Connect the motor to power following the wiring instructions printed on the motor. Ensure motor turns pump shaft in the direction of arrows indicated on the pump (clockwise looking from motor towards pump).

Connect the suction and discharge lines to the fluid end. Open the prime valve (D16-2Y) and run the pump until gas is purged from the system. Bubbles and chemical may flow out of the prime valve opening. If trouble is experienced during priming, use a trigger type oil can to force oil through the bleed hole into the fluid end. This may speed up the priming process. Close the prime valve after priming is complete.

FLOW RATE CONTROL

Choose the preferred flow rate from the provided flow rate table. Opting for the maximum stroke length with 5 index pins "IN" is generally advisable. This approach enables future adjustments for higher or lower flow rates by repositioning the index pins as needed.

To position the index pins (M11-3), use the pin hook (M11-4) to hook the pin and slide it either "IN" or "OUT" of the index wheel. "IN", will skip a stroke and is positioned with the grooved pin head closest to the index wheel. "OUT", will allow the piston to stroke and is positioned with the grooved pin head away from the index wheel. Do not pull the pin completely out of the index wheel.

To modify the stroke length, first, loosen the two cap screws (M13-1). Then, align the pull bar (M13S) with your chosen stroke length as printed on the pull bar. Finally, tighten the two cap screws to secure the assembly in place.

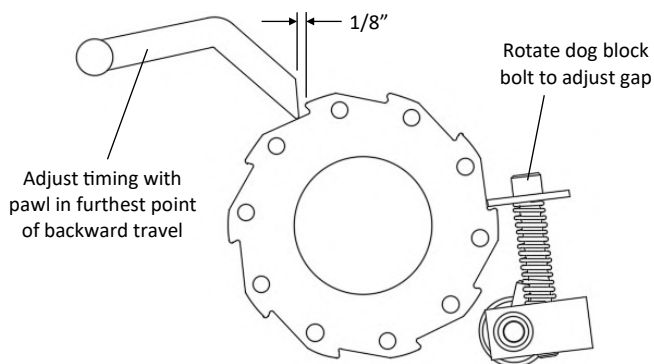
Pumps with 5/8" and 1" pistons that are not equipped with an index wheel control flow rate by modifying the stroke length. Adjust the stroke length by positioning the pull bar (M131) to the desired setting indicated on the flow rate table from the rows indicating "0" in the index pins column. Loosen screw (DFF44-2), then slide the pull bar to the desired position. Tighten the screw (DFF44-2) to secure the assembly.

MAINTENANCE & TROUBLESHOOTING

Chemical Leakage: This can be detected by chemical leaking around the fluid end nut (LD12-4B). To correct this issue, tighten the V-ring packing (D12B). First, loosen the setscrew (LD12-2) and nut (D47-1A) on top of the fluid end. Using the supplied packing wrench (D44-3), insert in holes of fluid end nut and rotate. Hold fluid end upright while rotating the fluid end nut. The rotation will compress the V-ring packing around the piston. Tighten the setscrew and nut on top of the fluid end. Overtightening the V-ring packing can prevent the piston from completing a full stroke.

Preventing Pump Box Oil Leakage Into Fluid End: This can be detected by oil leaking around the fluid end nut (LD12-4B). To correct this issue, tighten the rope packing (LD15-1). First, remove the cover (M23A) of the pump. Remove the hold pin (M15H) from the packing nut (LD15Y) inside the pump box. Using the supplied packing wrench (D44-3), insert in holes of packing nut and rotate. Do not overtighten rope packing.

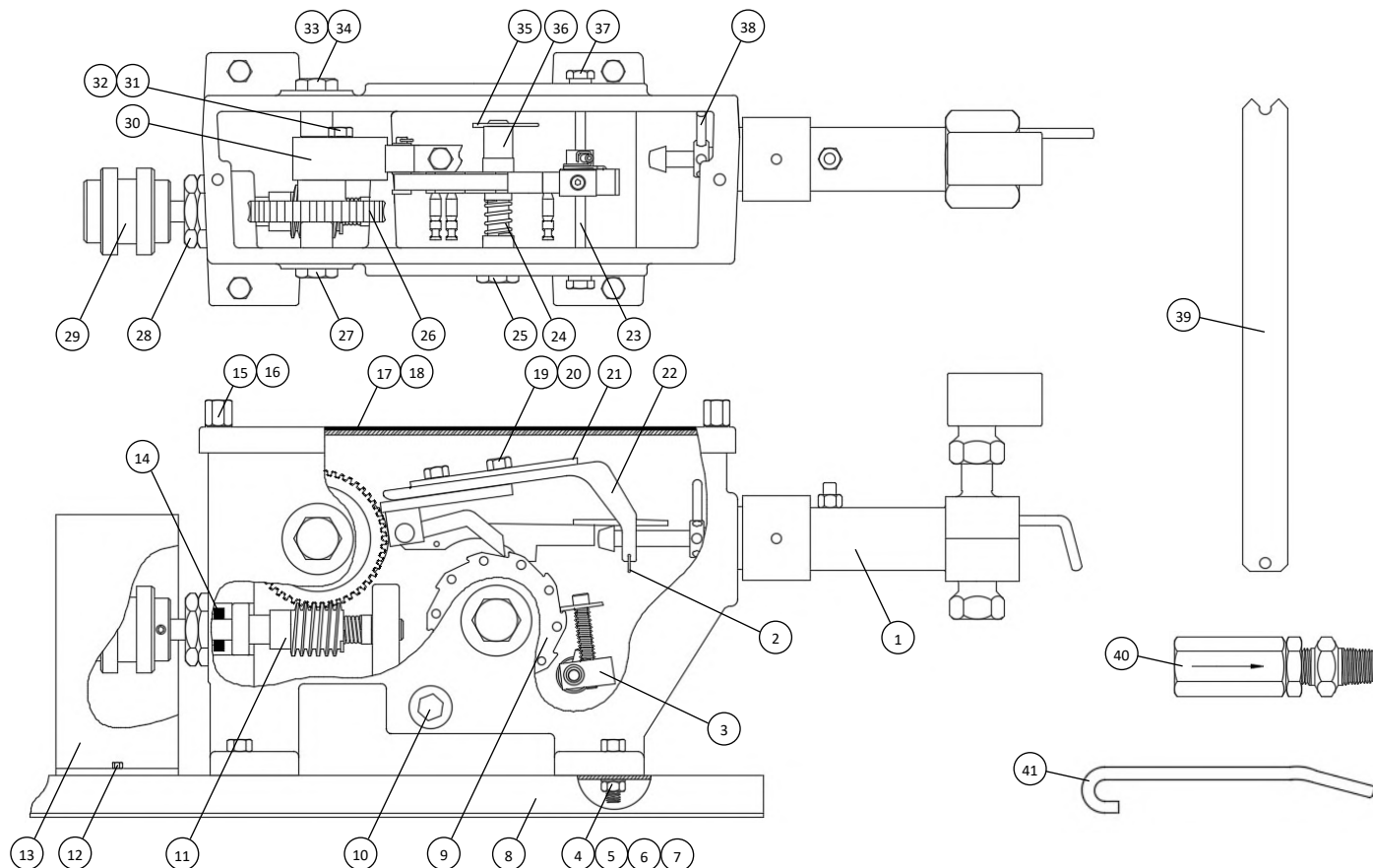
Dog Block Timing Adjustment: Manually rotate the drive shaft (M7-2A) clockwise until the pawl (M25) is in the farthest back point of its travel. The pawl should drop and be set to catch the next tooth on the index wheel with the next forward movement. In this back position, there should be a 1/8" gap between the pawl and index wheel. The dog tooth bolt (M20-8) should be set against the index wheel preventing reverse rotation. If the gap is not 1/8", turn the dog tooth bolt to adjust the gap. Rotate the drive shaft clockwise to observe the proper action on each of the 10 teeth on the index wheel.



TIPS FOR BEST OPERATION

- Plan ahead for proper pump mounting location
- Short flooded suction lines and clean chemicals with no debris perform best
- Chemical lines should be rigid and have no abrupt change in elevation to prevent trapping gas bubbles
- Fluid end must be vertical for ball check valves to operate properly
- Keep pump and motor shaft properly aligned
- Install motor cutoff switch within easy reach of pump
- Ensure correct rotation of motor
- Keep oil clean and at the recommended fill level to partially submerge piston

MA/MAS #2 PUMP - INDEX WHEEL: PARTS LIST



MA/MAS #2 - INDEX WHEEL											
1	FLUID END	***	13	COUPLING GUARD	M10-2A	25	SHAFT	M11D	36	SPACER	M20S
2	COTTER PIN	M13P	14	OIL SEAL	M9-2B	26	WORMGEAR ASSY	M6Z	37	PLUG	M20-2L
3	DOG BLOCK ASSY	M20-1Z	15	THUMB SCREW	LD23-2	27	PLUG BEARING, LH	M6-3	38	HOLD PIN	M15H
4	CAP SCREW	LD8-3	16	GASKET	LD23-2A	28	RETAINER	M9B	39	PIN HOOK	M11-4
5	WASHER	D21-2	17	COVER	M23A	29	COUPLING ASSY	M10SF	40	LINE CHECK VALVE	D461
6	LOCK WASHER	M4L	18	GASKET	M23-1	29	COUPLING ASSY	M10*	41	PACKING WRENCH	D44-3
7	NUT	D1-2A	19	CAP SCREW	M13-1	30	FOLLOWER ASSY	M5-4Z	NOT PICTURED		
8	BASE	M1	20	LOCK WASHER	M13-1W	31	CAP SCREW	LD10-2		MOTOR	***
9	INDEX WHEEL ASSY	M11Z	21	CLAMP BAR	M13-2	32	WASHER	M5-3		CAP SCREW	D23-2**
10	DRAIN PLUG	M2-2	22	RETURN BAR	M13S	33	PLUG BEARING, RH	M6-2		WASHER	M56**
11	WORMSHAFT ASSY	M7AZ	23	SHAFT	M20-2S	34	SHIM WASHER	M6-2W		LOCK WASHER	D47-1L**
12	SCREW	M10-2B	24	SPRING	D5-1	35	CLIP	M20D3		NUT	D47-1A**

Subassembly detail shown in following drawings

*** See subassembly drawing for part number

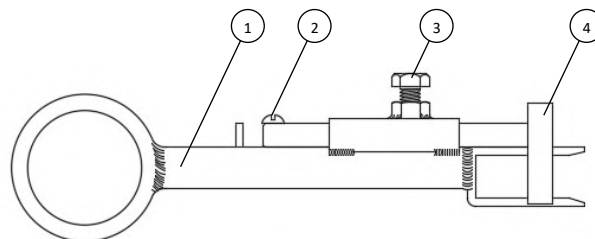
**Location: Mount motor to base

* Optional equipment

MA #2 PUMP - NO INDEX WHEEL: PARTS LIST

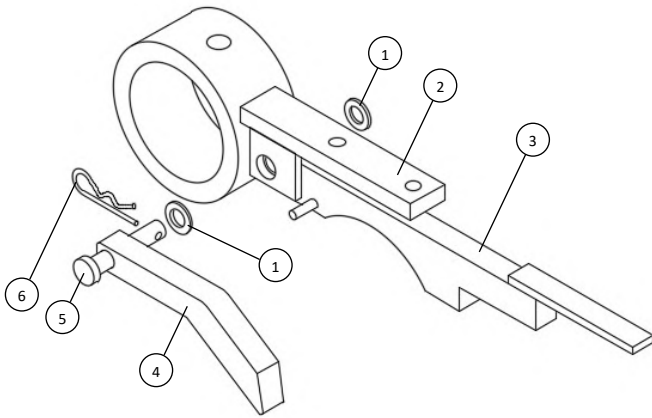
Includes all parts from MA/MAS #2

MA #2 - NO INDEX WHEEL		
PLUG	D24-1	Not pictured, replaces M11D
PUSH BAR ASSY	M501-4Z	Replaces M5-4Z
1	PUSH BAR	M501-4
2	SCREW	M131-2
3	CAP SCREW	DFF44-2
4	PULL BAR	M131

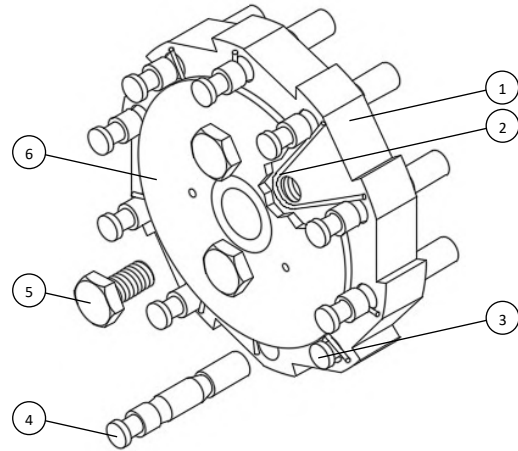


All images are for illustrative purposes. Actual product may differ.

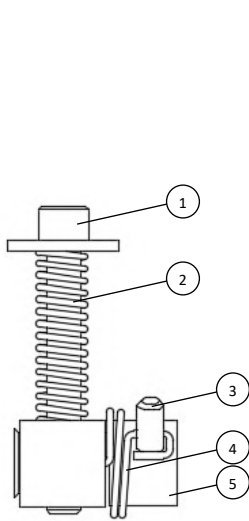
MA/MAS #2 PUMP: SUBASSEMBLIES



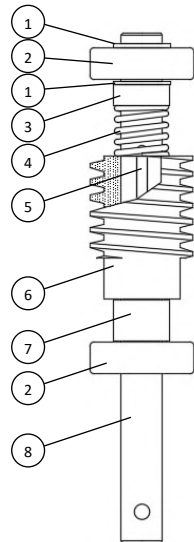
FOLLOWER ASSY M5-4Z			
1	SPACER	M25-1B	4 PAWL M25
2	FOLLOWER	M5-4	5 PIN M25-1
3	PUSH BAR	M24	6 COTTER PIN LD13-2



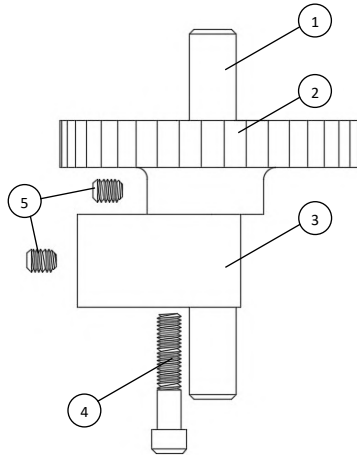
INDEX WHEEL ASSY M11Z				
1	INDEX WHEEL	M11	4 INDEX PIN	M11-3
2	SPRING	M11-5	5 BOLT	LD10-2
3	INDEX PIN, SHORT	M11-3S	6 PLATE	M11-6



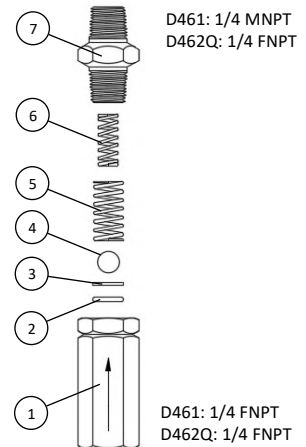
DOG BLOCK ASSY M20-1Z		
1	DOG TOOTH BOLT	M20-8
2	SPRING	M20-9
3	SET SCREW	M20-10
4	TORSION SPRING	M20-7
5	BLOCK AND PIVOT	M20-1



WORMSHAFT ASSY M7AZ		
1	RETAINING RING	M7-6A
2	BEARING	M8
3	SPACER	M7-7
4	SPRING	D7
5	KEY	M7-1
6	WORM	M7
7	SPACER	M7-7A
8	SHAFT	M7-2A



WORMGEAR ASSY M6Z		
1	SHAFT	M6-4
2	GEAR	MT6
3	CAM	M5
4	BOLT	M5-1
5	SETSCREW	LD7-1A



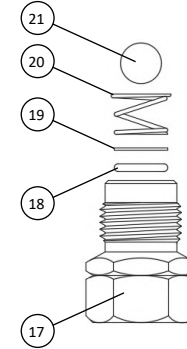
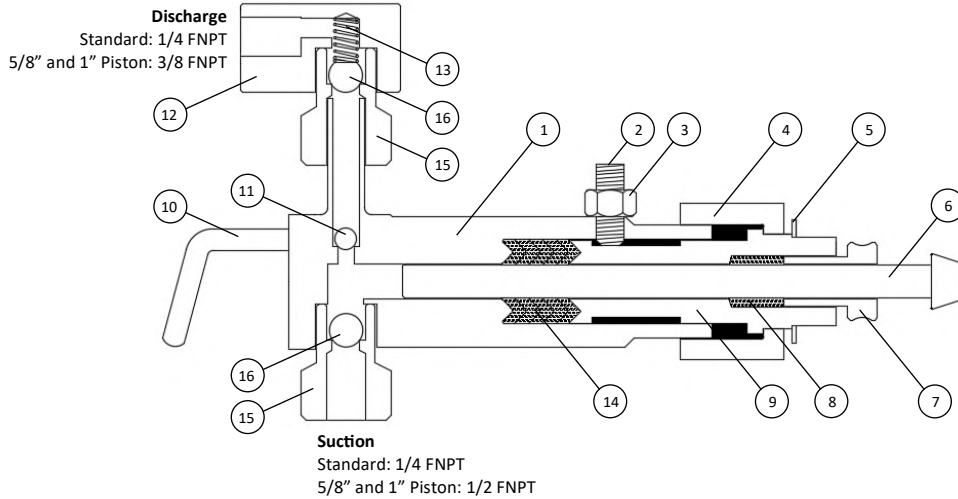
LINE CHECK VALVE			D461	D462Q
1	BODY / CAGE	D461B	D176BQ	
2	O-RING, TEFLON™	M170-55T*	D170-5T*	
3	RING	D461R	D177	
4	BALL, CERAMIC	D17-5C	D17-6C	
5	SPRING	D461S	D178	
6	SPRING	D18-1Y	D462SQ	
7	NIPPLE / BODY	D461A	D462BFQ	

*Alternate materials: Buna-N, Viton™, Neoprene, EPDM

MOTOR	HP	HZ	VOLTAGE	PHASE	ENCLOSURE	HAZARD CLASS	TEMP CODE
MR-T13B	1/3	60	115/208-230V AC	1	TEFC	-	-
MR-T33B	1/3	60	208/230-460V AC	3	TEFC	-	-
MR-E13B	1/3	60	115/208-230V AC	1	XPFC	CL 1 GR C,D / CL 2 GR E,F,G	T3B
MR-E33B	1/3	60	208/230-460V AC	3	XPFC	CL 1 GR D / CL 2 GR F,G	T3C

All images are for illustrative purposes. Actual product may differ.

MA/MAS #2 PUMP: SUBASSEMBLIES CONTINUED



UPGRADE:
Resilient check valve improves sealing capability on low viscosity fluids such as methanol

PISTON DIA (IN) MATERIAL	1/4			3/8			5/8		1	
	Standard	Y	Q	Standard	Y	Q	Y	Q	Y	Q
MA FLUID END ASSY	M164Z1	M164Z1Y	M164Z1Q	M160Z1	M160Z1Y	M160Z1Q	M161Z1Y	M161Z1Q	M161-8Z1Y	M161-8Z1Q
1 FLUID END BODY	LD164	LD164Y	LD164Q	LD160	LD160Y	LD160Q	M161Y	M161Q	M161-8Y	M161-8Q
2 SETSCREW	LD12-2	LD12-2Q	LD12-2Q	LD12-2	LD12-2Q	LD12-2Q	LD12-2Q	LD12-2Q	LD12-2Q	LD12-2Q
3 NUT	D47-1A	D47-1AQ	D47-1AQ	D47-1A	D47-1AQ	D47-1AQ	D47-1AQ	D47-1AQ	D47-1AQ	D47-1AQ
4 FLUID END NUT	LD12-4B	LD12-4BY	LD12-4BQ	LD12-4B	LD12-4BY	LD12-4BQ	M121-4BY	M121-4BQ	M121-4BY	M121-4BQ
5 GASKET	LD12-1	LD12-1	LD12-1	LD12-1	LD12-1	LD12-1	M121-1	M121-1	M121-18	M121-18
6 PISTON	M144Y	M144Y	M144Q	M14Y	M14Y	M14Q	M141Y	M141Q	M141-8Y	M141-8Q
7 ROPE PACKING NUT	LD15Y	LD15Y	LD15Q	LD15Y	LD15Y	LD15Q	M151Y	M151Q	M151-8Y	M151-8Q
8 ROPE PACKING, GRAPHITE	LD15-1	LD15-1	LD15-1*	LD15-1	LD15-1	LD15-1*	M151-1	M151-1*	M151-18	M151-18*
8 ROPE PACKING, TEFLON™	LD15-1T*	LD15-1T*	LD15-1T	LD15-1T*	LD15-1T*	LD15-1T	M151-1T*	M151-1T	M151-18T*	M151-18T
9 CYLINDER	LD124-4AY	LD124-4AY	LD124-4AQ	LD12-4AY	LD12-4AY	LD12-4AQ	M121-4AY	M121-4AQ	M121-48AY	M121-48AQ
10 PRIME VALVE	D16-2Y	D16-2Y	D16-2Q	D16-2Y	D16-2Y	D16-2Q	D16-2Y	D16-2Q	D16-2Y	D16-2Q
11 PRIME BALL, CERAMIC	D17-4C	D17-4C	D17-4C	D17-4C	D17-4C	D17-4C	D17-6C	D17-6C	D17-6C	D17-6C
11 PRIME BALL, TUNGSTEN	D17-4T*	D17-4T*	D17-4T*	D17-4T*	D17-4T*	D17-4T*	D17-6T*	D17-6T*	D17-6T*	D17-6T*
12 SQUARE ELL	D170-4	D170-4Y	D170-4Q	D170-4	D170-4Y	D170-4Q	M171-4Y	M171-4Q	M171-4Y	M171-4Q
13 SPRING	D18-1Y	D18-1Y	D18-1Y	D18-1Y	D18-1Y	D18-1Y	M181-1Y	M181-1Y	M181-1Y	M181-1Y
14 V-RING PACKING	HHHHH	BTBTB	VTVTV	HHHHH	BTBTB	VTVTV	BTBTB	VTVTV	BTBTB	VTVTV
PACKING, EPDM (B)	D124B*	D124B (3)	D124B*	D12B*	D12B (3)	D12B*	D121B (3)	D121B*	M121-8B (2)	M121-8B*
PACKING, BUNA-N (H)	D124H (5)	D124H*	D124H*	D12H (5)	D12H*	D12H*	D121H*	D121H*	M121-8H*	M121-8H*
PACKING, NEOPRENE (N)	D124N*	D124N*	D124N*	D12N*	D12N*	D12N*	D121N*	D121N*	M121-8N*	M121-8N*
PACKING, TEFLON™ (T)	D124T*	D124T (2)	D124T (2)	D12T*	D12T (2)	D12T (2)	D121T (2)	D121T (2)	M121-8T (1)	M121-8T (1)
PACKING, VITON™ (V)	D124V*	D124V*	D124V (3)	D12V*	D12V*	D12V (3)	D121V*	D121V (3)	M121-8V*	M121-8V (2)
CHECK VALVE	D17Y	D17Y	D17Q	D17Y	D17Y	D17Q	D172Y	D172Q	D172Y	D172Q
15 CAGE	D17BY	D17BY	D17BQ	D17BY	D17BY	D17BQ	D172B	D172BQ	D172B	D172BQ
16 CHECK BALL, CERAMIC	D17-6C	D17-6C	D17-6C	D17-6C	D17-6C	D17-6C	D171-2C	D171-2C	D171-2C	D171-2C
16 CHECK BALL, TUNGSTEN	D17-6T*	D17-6T*	D17-6T*	D17-6T*	D17-6T*	D17-6T*	D171-2T*	D171-2T*	D171-2T*	D171-2T*
RESILIENT CHECK VALVE	D176ZYT*	D176ZYT*	D176ZQT*	D176ZYT*	D176ZYT*	D176ZQT*	D172ZYT*	D172ZQT*	D172ZYT*	D172ZQT*
17 CAGE	D176B	D176B	D176BQ	D176B	D176B	D176BQ	D172B	D172BQ	D172B	D172BQ
18 O-RING, TEFLON™	D170-5T**	D170-5T**	D170-5T**	D170-5T**	D170-5T**	D170-5T**	D171-8T**	D171-8T**	D171-8T**	D171-8T**
19 RING	D177	D177	D177	D177	D177	D177	D173	D173	D173	D173
20 SPRING	D178	D178	D178	D178	D178	D178	D174	D174	D174	D174
21 CHECK BALL, CERAMIC	D17-6C	D17-6C	D17-6C	D17-6C	D17-6C	D17-6C	D171-2C	D171-2C	D171-2C	D171-2C
21 CHECK BALL, TUNGSTEN	D17-6T*	D17-6T*	D17-6T*	D17-6T*	D17-6T*	D17-6T*	D171-2T*	D171-2T*	D171-2T*	D171-2T*
MAS FLUID END ASSY	<i>MAS fluid end BOM same as above, except replace piston with the following</i>						M161Z1RY	M161Z1RQ	M161-8Z1RY	M161-8Z1RQ
6 PISTON							M141RY	M141RQ	M141-8RY	M141-8RQ

**Alternate materials: Buna-N, Viton™, Neoprene, EPDM

*Optional equipment, please specify when ordering

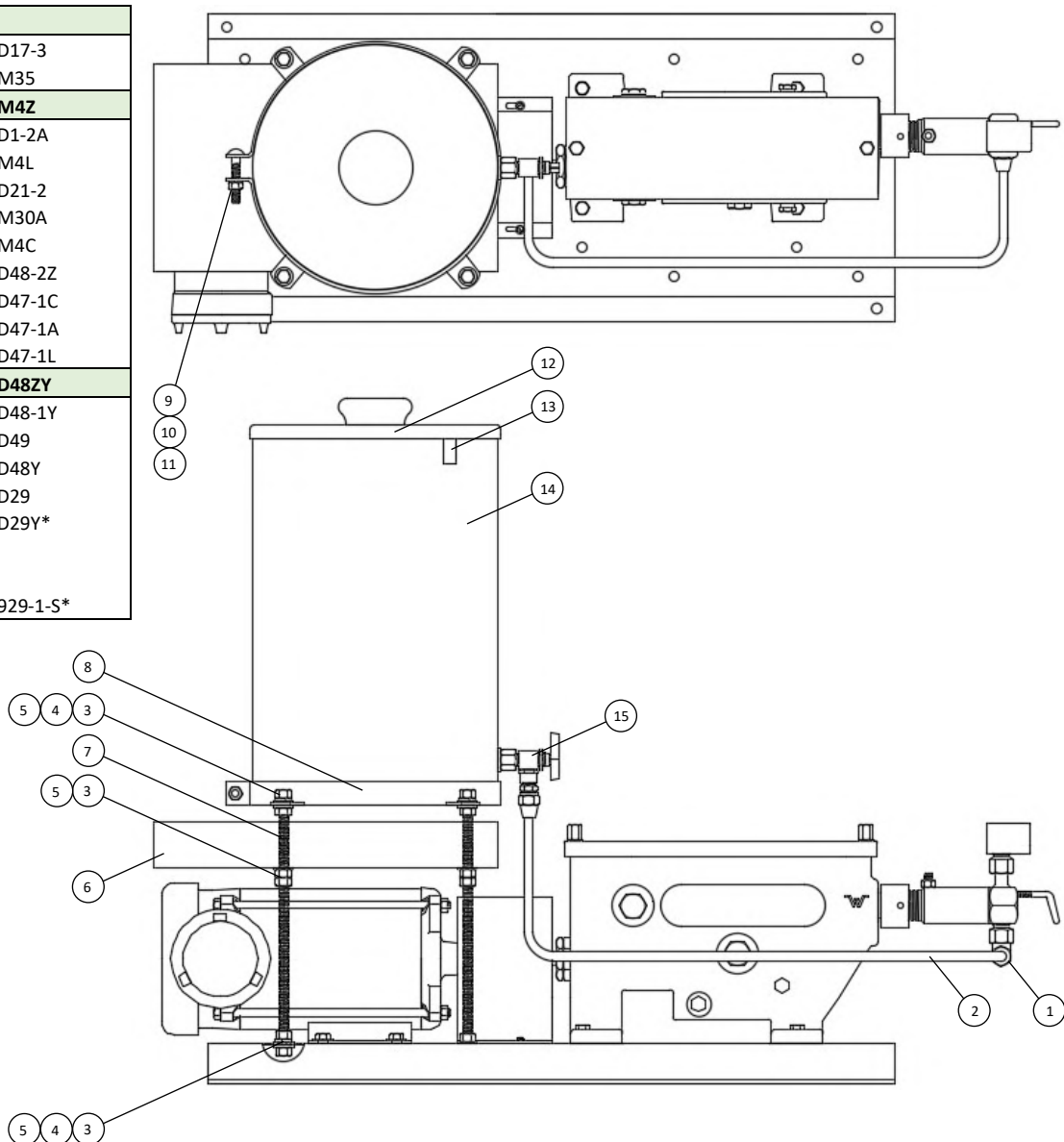
All images are for illustrative purposes. Actual product may differ.

MA/MAS #3 PUMP: PARTS LIST

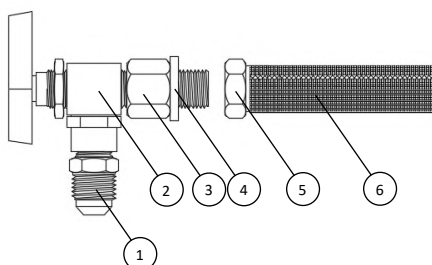
Includes all parts from MA/MAS #2

MA/MAS #3		
1	ELL	D17-3
2	TUBE ASSY	M35
TANK LEG ASSY M4Z		
3	NUT	D1-2A
4	LOCK WASHER	M4L
5	WASHER	D21-2
6	COVER	M30A
7	STUD	M4C
8	TANK BAND	D48-2Z
9	BOLT	D47-1C
10	NUT	D47-1A
11	LOCK WASHER	D47-1L
TANK ASSY D48ZY		
12	TANK LID WITH KNOB	D48-1Y
13	GAUGE STICK	D49
14	TANK	D48Y
15	TANK VALVE ASSY	D29
15	TANK VALVE ASSY*	D29Y*
NOT PICTURED		
	LEVEL SIGHT GAUGE*	929-1-S*

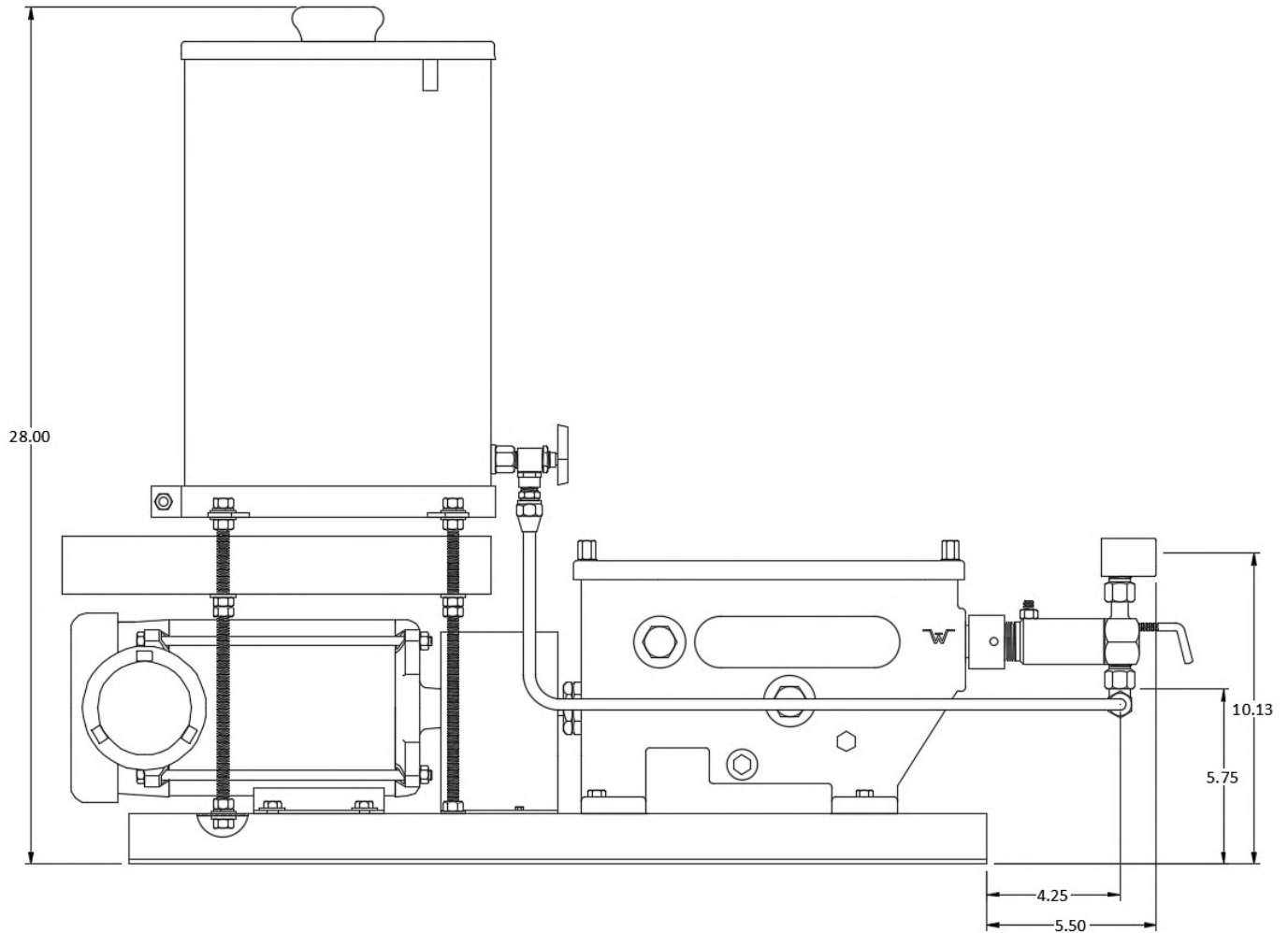
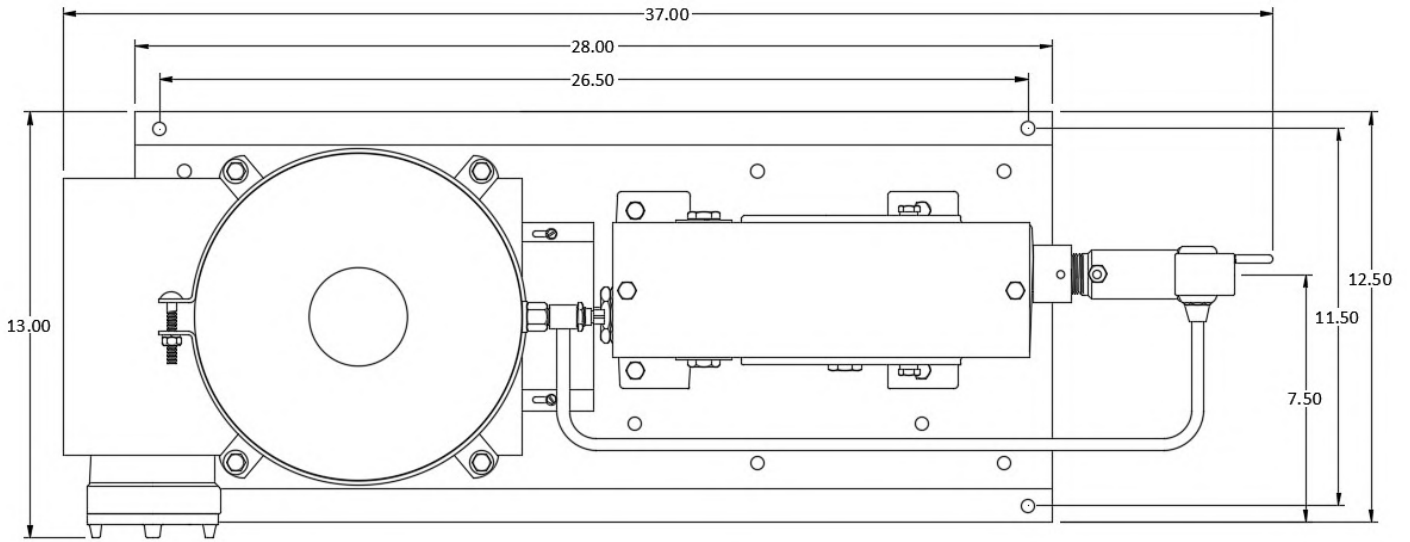
*Optional equipment



TANK VALVE ASSY	D29	D29Y
1	ADAPTER	D32-2
2	BALL VALVE	D29V
3	ADAPTER	D29A
4	GASKET	D28-8
5	NUT	D28-4Y
6	STRAINER	D28-3



All images are for illustrative purposes. Actual product may differ.



Western Chemical Pumps, Inc.
603 South Kansas Avenue, Olathe, KS 66061
913 - 829 - 1888 | sales@westernchemicalpumps.com

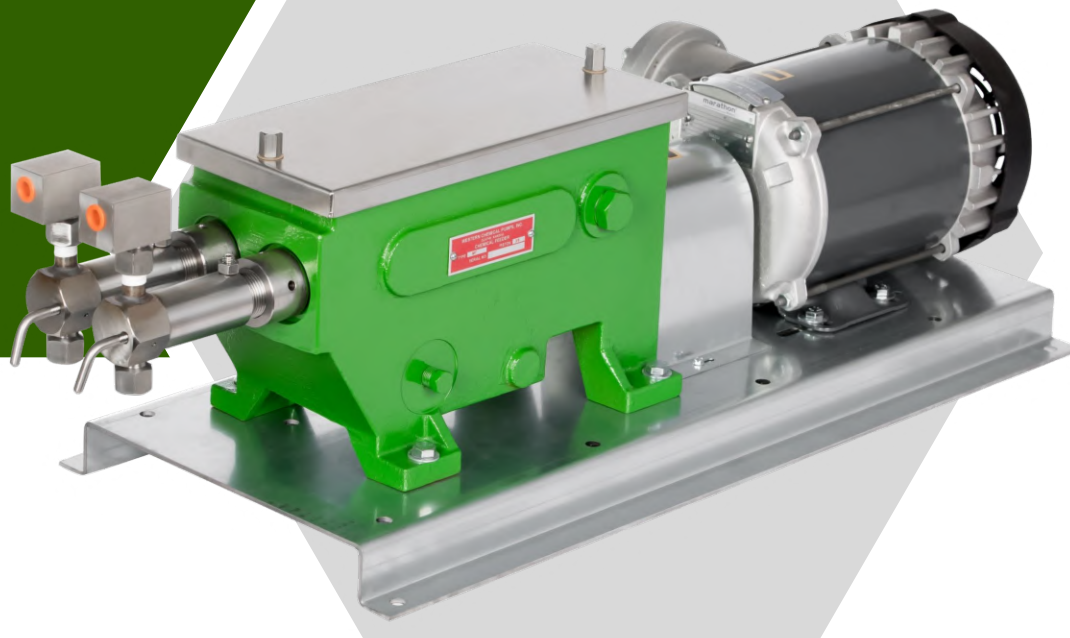
Dimensions are in inches. Actual product may have variance in measurements.
 All images are for illustrative purposes. Actual product may differ.

Western Chemical Pumps, Inc. reserves the right to make changes in specifications and features shown herein, or discontinue the product described at any time without notice or obligation. Contact your Western Chemical Pumps, Inc. distributor for the most current information.

CHEMICAL INJECTION PUMP

MOTOR DRIVEN

TWO HEADS



The model MT chemical injection pumps are designed to be driven by an electric motor. These positive displacement pumps have removable fluid ends with interchangeable check valves, and a removable stainless steel cover for easy maintenance on the drivetrain.

The pumps are available in various materials and piston sizes to meet your specific chemical injection requirements. They can also be equipped with chemical tanks and index wheels to provide simple flow rate control.

For decades, Western Chemical Pumps model MT pump has demonstrated reliable engineering and design, earning the trust of its users through rigorous testing and proven performance.

FEATURES

- ◆ Two fluid end pump
- ◆ Index wheel allows easy flow rate control by skipping strokes to inject the precise amount desired
- ◆ Adjustable stroke length to fine tune injection flow rates
- ◆ Double piston seals with vented isolation to prevent chemical blow-by into pump box
- ◆ Capable of injecting up to 5,000 psi
- ◆ Stainless steel piston and check valves come standard for better reliability

WESTERN

TM



MT PUMP CONFIGURATIONS

MT	3/8	#2	Y	PART NUMBER
↑	↑	↑	↑	Model
MT				Electric Motor, Dual Head
				Piston Diameter
	1/4			1/4" (Includes Index Wheels)
	3/8			3/8" (Includes Index Wheels)
	5/8			5/8" (No Index Wheels)
	1			1" (No Index Wheels)
				Attachments
		#2		No Tanks
		#3		Two Tanks
				Fluid End Material
				Steel (standard)
			Y	303 Stainless Steel
			Q	316 Stainless Steel

MTS	-A	#2	Y	PART NUMBER
↑	↑	↑	↑	Model
MTS				Electric Motor, Dual Head
				Piston Diameter
	-A			1/4" or 3/8" (Index Wheel) and 5/8" (No Index Wheel)
	-B			1/4" or 3/8" (Index Wheel) and 5/8" (Index Wheel)
	-C			5/8" (Index Wheel) and 5/8" (Index Wheel)
				Attachments
		#2		No Tanks
		#3		Two Tanks
				Fluid End Material
			Y	Stainless Steel
			Q	316 Stainless Steel

OPTIONS & UPGRADES

Material: Upgrade to Y or Q models for enhanced corrosion resistance

Piston Size: Multiple sizes available to fit your required injection flow rates and pressures

Resilient Seat Check Valves: Added O-ring provides better sealing capability, which is ideal for low viscosity fluids, such as methanol

Packing Seals: Buna-N, EPDM, Neoprene, PTFE (Teflon™), FKM (Viton™)

Rope Packing: Graphite impregnated or PTFE (Teflon™) rope

Prime Ball: Ceramic or tungsten

Tank: Optional two 5 gallon stainless steel tanks

Index Wheel: MT 1/4" and 3/8" pumps come standard with index wheels. MT 5/8" pump requires an upgrade to the MTS model to include an index wheel. The index wheel has 10 easily adjustable pins allowing flow rate control by skipping strokes.

Motors: Multiple motor models available to fit your power supply

Pulley Driven: Option to replace the motor for a pulley, if an existing power drivetrain is available

Coupler: Option available that is ideal for cold weather environments

Other unique or special order materials are available to fit your needs. Please inquire with your Western Chemical Pumps, Inc. distributor. Specify desired options when placing order.

PER HEAD		
PISTON DIA (IN)	MAX DISCHARGE PRESSURE (PSI)	FLOW RATE MIN - MAX (QTS / DAY)
1/4	5,000	0.3 - 42.2
3/8	3,000	0.6 - 95.0
5/8	1,100	1.6 - 263.9
1	400	42.2 - 675.6

PER HEAD - FLOW RATE (QTS / DAY)					
PISTON DIA (IN)	INDEX PINS "IN"	STROKE LENGTH			
		1	11/16	5/16	1/16
1/4	0	42.2	29.0	13.2	2.6
	1	38.0	26.1	11.9	2.4
	2	33.8	23.2	10.6	2.1
	3	29.6	20.3	9.2	1.8
	4	25.3	17.4	7.9	1.6
	5	21.1	14.5	6.6	1.3
	6	16.9	11.6	5.3	1.1
	7	12.7	8.7	4.0	0.8
	8	8.4	5.8	2.6	0.5
	9	4.2	2.9	1.3	0.3
3/8	0	95.0	65.3	29.7	5.9
	1	85.5	58.8	26.7	5.3
	2	76.0	52.3	23.8	4.8
	3	66.5	45.7	20.8	4.2
	4	57.0	39.2	17.8	3.6
	5	47.5	32.7	14.8	3.0
	6	38.0	26.1	11.9	2.4
	7	28.5	19.6	8.9	1.8
	8	19.0	13.1	5.9	1.2
	9	9.5	6.5	3.0	0.6
5/8	0	263.9	181.4	82.5	16.5
	1	237.5	163.3	74.2	14.8
	2	211.1	145.2	66.0	13.2
	3	184.7	127.0	57.7	11.5
	4	158.4	108.9	49.5	9.9
	5	132.0	90.7	41.2	8.2
	6	105.6	72.6	33.0	6.6
	7	79.2	54.4	24.7	4.9
	8	52.8	36.3	16.5	3.3
	9	26.4	18.1	8.2	1.6
1	0	675.6	464.5	211.1	42.2

CAUTION

3 PHASE MOTORS REVERSE DIRECTION WHEN POWER WIRES ARE INTERCHANGED. CHECK ROTATION OF MOTOR IMMEDIATELY AFTER ANY ELECTRICAL MODIFICATIONS.

ENSURE PUMP IS ELECTRICALLY ISOLATED WITH PROPER LOCKOUT / TAGOUT PROCEDURES PRIOR TO PERFORMING WORK.

ENSURE CHECK VALVE FLOW IS IN THE DIRECTION OF THE ARROW. INCORRECT DIRECTION COULD CAUSE PUMP TO OVER PRESSURE.

INSTALLATION & OPERATION

Securely mount base (M1) to concrete pad or platform. Ensure motor and pump shaft remain in alignment during installation. Misalignment could cause premature wear on coupler and bearings.

Fill the pump box with 3-1/2 quarts SAE 20 or SAE 30. The oil level should partially submerge the piston.

Connect the motor to power following the wiring instructions printed on the motor. Ensure motor turns pump shaft in the direction of arrows indicated on the pump (clockwise looking from motor towards pump).

Connect the suction and discharge lines to the fluid end. Open the prime valve (D16-2Y) and run the pump until gas is purged from the system. Bubbles and chemical may flow out of the prime valve opening. If trouble is experienced during priming, use a trigger type oil can to force oil through the bleed hole into the fluid end. This may speed up the priming process. Close the prime valve after priming is complete.

FLOW RATE CONTROL

Choose the preferred flow rate from the provided flow rate table. Opting for the maximum stroke length with 5 index pins "IN" is generally advisable. This approach enables future adjustments for higher or lower flow rates by repositioning the index pins as needed.

To position the index pins (M11-3), use the pin hook (M11-4) to hook the pin and slide it either "IN" or "OUT" of the index wheel. "IN", will skip a stroke and is positioned with the grooved pin head closest to the index wheel. "OUT", will allow the piston to stroke and is positioned with the grooved pin head away from the index wheel. Do not pull the pin completely out of the index wheel. Index pins (MT11-3) are threaded and can be screwed "IN" or "OUT".

To modify the stroke length, first, loosen the two cap screws (M13-1). Then, align the pull bar (M13S) with your chosen stroke length as printed on the pull bar. Finally, tighten the two cap screws to secure the assembly in place.

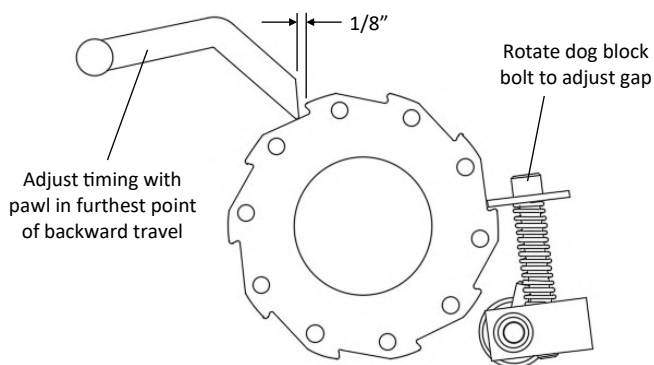
Pumps with 5/8" and 1" pistons that are not equipped with an index wheel control flow rate by modifying the stroke length. Adjust the stroke length by positioning the pull bar (M131) to the desired setting indicated on the flow rate table from the rows indicating "0" in the index pins column. Loosen screw (DFF44-2), then slide the pull bar to the desired position. Tighten the screw (DFF44-2) to secure the assembly.

MAINTENANCE & TROUBLESHOOTING

Chemical Leakage: This can be detected by chemical leaking around the fluid end nut (LD12-4B). To correct this issue, tighten the V-ring packing (D12B). First, loosen the setscrew (LD12-2) and nut (D47-1A) on top of the fluid end. Using the supplied packing wrench (D44-3), insert in holes of fluid end nut and rotate. Hold fluid end upright while rotating the fluid end nut. The rotation will compress the V-ring packing around the piston. Tighten the setscrew and nut on top of the fluid end. Overtightening the V-ring packing can prevent the piston from completing a full stroke.

Preventing Pump Box Oil Leakage Into Fluid End: This can be detected by oil leaking around the fluid end nut (LD12-4B). To correct this issue, tighten the rope packing (LD15-1). First, remove the cover (MT-23A) of the pump. Remove the hold pins (M15H, MT15H) from the packing nut (LD15Y) inside the pump box. Using the packing wrench (D44-3), insert in holes of packing nut and rotate. Do not overtighten rope packing.

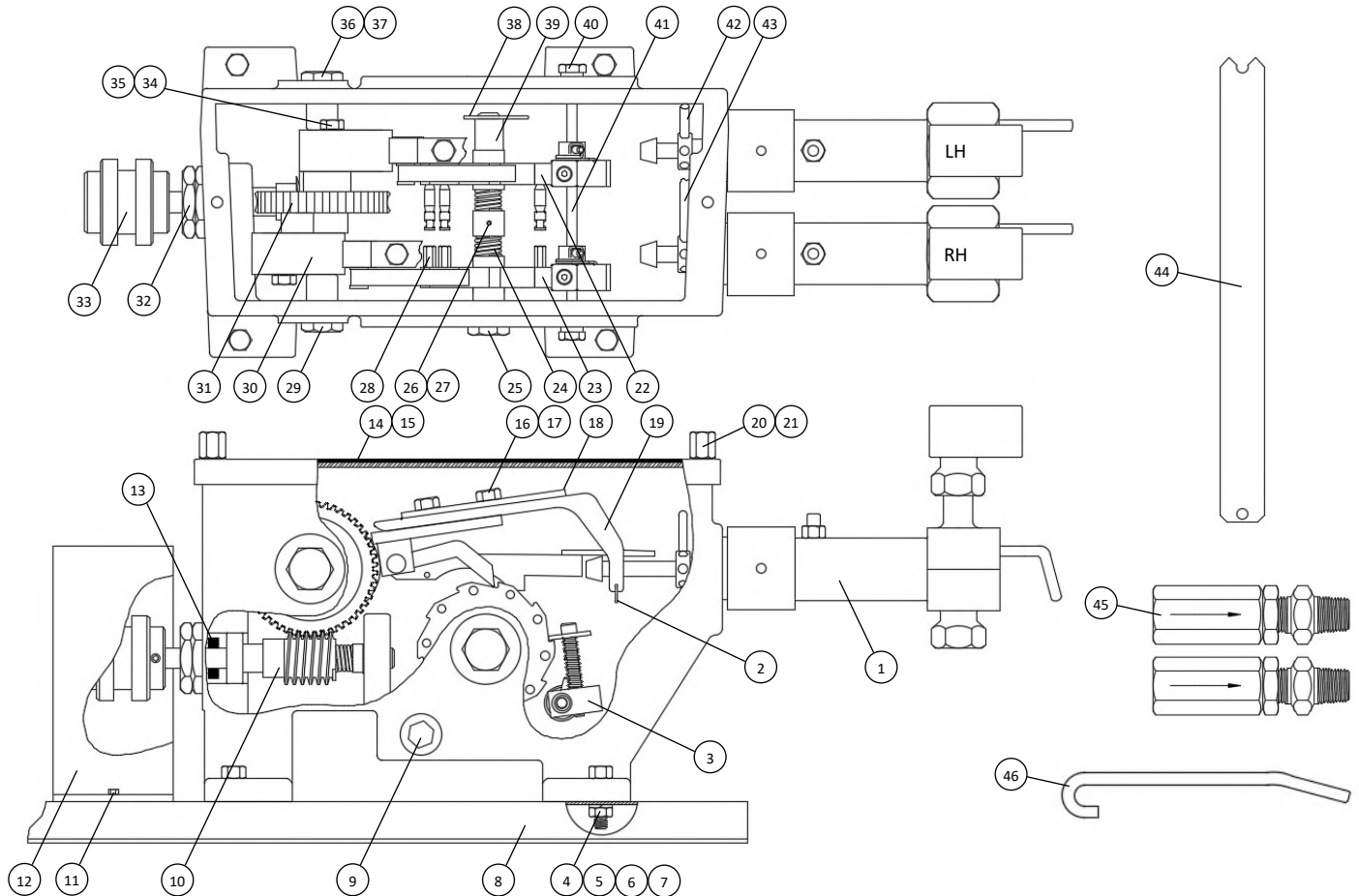
Dog Block Timing Adjustment: Manually rotate the drive shaft (M7-2A) clockwise until the pawl (M25) is in the farthest back point of its travel. The pawl should drop and be set to catch the next tooth on the index wheel with the next forward movement. In this back position, there should be a 1/8" gap between the pawl and index wheel. The dog tooth bolt (M20-8) should be set against the index wheel preventing reverse rotation. If the gap is not 1/8", turn the dog tooth bolt to adjust the gap. Rotate the drive shaft clockwise to observe the proper action on each of the 10 teeth on the index wheel.



TIPS FOR BEST OPERATION

- Plan ahead for proper pump mounting location
- Short flooded suction lines and clean chemicals with no debris perform best
- Chemical lines should be rigid and have no abrupt change in elevation to prevent trapping gas bubbles
- Fluid end must be vertical for ball check valves to operate properly
- Keep pump and motor shaft properly aligned
- Install motor cutoff switch within easy reach of pump
- Ensure correct rotation of motor
- Keep oil clean and at the recommended fill level to partially submerge piston

MT/MTS #2 PUMP - INDEX WHEEL: PARTS LIST



MT/MTS #2 - INDEX WHEEL

1 FLUID END	***	15 GASKET	MT23-1	29 PLUG BEARING, LH	M6-3	42 HOLD PIN	M15H
2 COTTER PIN	M13P	16 CAP SCREW	M13-1	30 FOLLOWER ASSY	M5-4Z	43 HOLD PIN	MT15H
3 DOG BLOCK ASSY	M20-1Z	17 LOCK WASHER	M13-1W	31 WORMGEAR ASSY	MT6Z	44 PIN HOOK	M11-4
4 CAP SCREW	LD8-3	18 CLAMP BAR	M13-2	32 RETAINER	M9B	45 LINE CHECK VALVE	D461
5 WASHER	D21-2	19 RETURN BAR	M13S	33 COUPLING ASSY	M10SF	46 PACKING WRENCH	D44-3
6 LOCK WASHER	M4L	20 THUMB SCREW	LD23-2	34 CAP SCREW	LD10-2	NOT PICTURED	
7 NUT	D1-2A	21 GASKET	LD23-2A	35 WASHER	M5-3		
8 BASE	M1	22 INDEX WHEEL ASSY	M11Z	36 PLUG BEARING, RH	M6-2		
9 DRAIN PLUG	M2-2	23 INDEX WHEEL	MT11	37 SHIM WASHER	M6-2W		
10 WORMSHAFT ASSY	M7AZ	24 SPRING	D7	38 CLIP	M20D3		
11 SCREW	M10-2B	25 SHAFT	MT11D	39 SPACER	M20-6	MOTOR	***
12 COUPLING GUARD	M10-2A	26 SPACER	MT20-6	40 PLUG	M20-2L	CAP SCREW	D23-2**
13 OIL SEAL	M9-2B	27 SETSCREW	M20-5	41 SHAFT	MT20-2S	WASHER	M56**
14 COVER	MT23A	28 INDEX PIN	MT11-3			LOCK WASHER	D47-1L**
						NUT	D47-1A**

Subassembly detail shown in following drawings

*** See subassembly drawing for part number

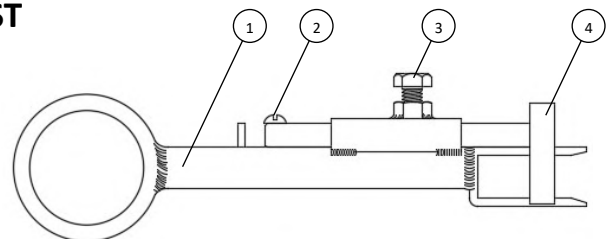
**Location: Mount motor to base

* Optional equipment

MT/MTS #2 PUMP - NO INDEX WHEEL: PARTS LIST

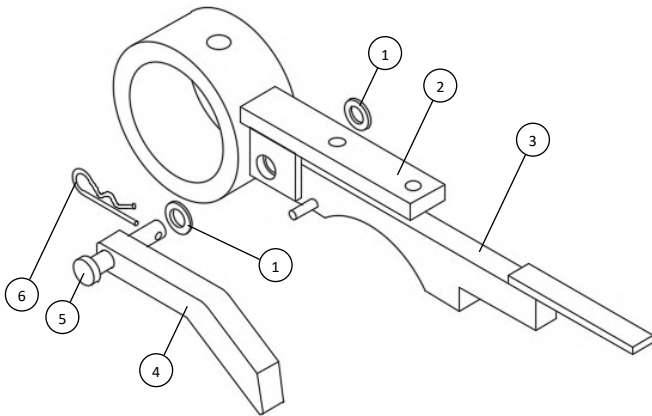
Includes all parts from MT/MTS #2

MT/MTS #2 - NO INDEX WHEEL		
PLUG	D24-1	Not pictured, replaces M11D
PUSH BAR ASSY	M501-4Z	Replaces M5-4Z
1 PUSH BAR	M501-4	
2 SCREW	M131-2	
3 CAP SCREW	DFF44-2	
4 PULL BAR	M131	

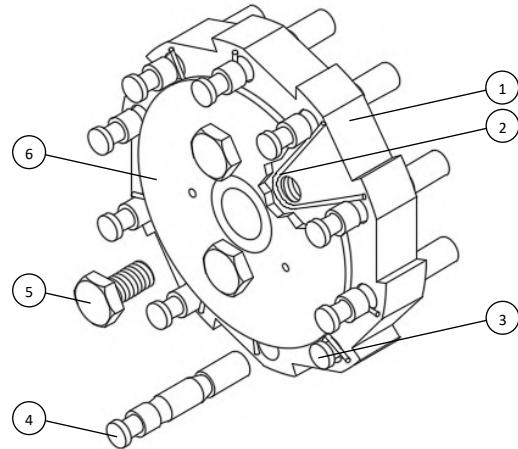


All images are for illustrative purposes. Actual product may differ.

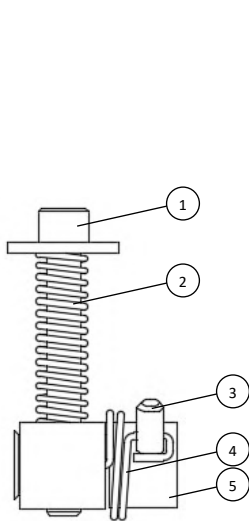
MT/MTS #2 PUMP: SUBASSEMBLIES



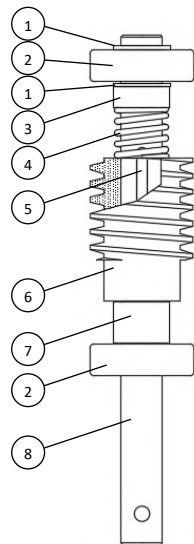
FOLLOWER ASSY M5-4Z			
1	SPACER	M25-1B	4 PAWL M25
2	FOLLOWER	M5-4	5 PIN M25-1
3	PUSH BAR	M24	6 COTTER PIN LD13-2



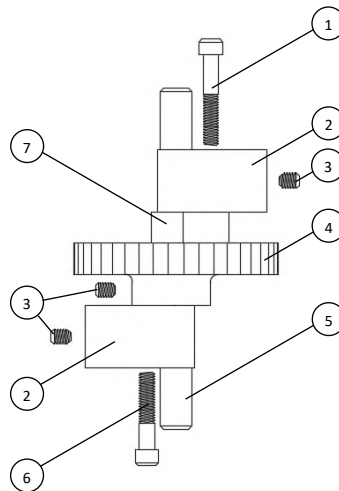
INDEX WHEEL ASSY M11Z				
1	INDEX WHEEL	M11	4 INDEX PIN	M11-3
2	SPRING	M11-5	5 BOLT	LD10-2
3	INDEX PIN, SHORT	M11-3S	6 PLATE	M11-6



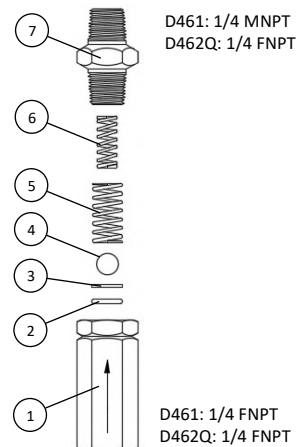
DOG BLOCK ASSY M20-1Z		
1	DOG TOOTH BOLT	M20-8
2	SPRING	M20-9
3	SET SCREW	M20-10
4	TORSION SPRING	M20-7
5	BLOCK AND PIVOT	M20-1



WORMSHAFT ASSY M7AZ		
1	RETAINING RING	M7-6A
2	BEARING	M8
3	SPACER	M7-7
4	SPRING	D7
5	KEY	M7-1
6	WORM	M7
7	SPACER	M7-7A
8	SHAFT	M7-2A



WORMGEAR ASSY MT6Z		
1	BOLT	MT5-1
2	CAM	M5
3	SETSCREW	LD7-1A
4	GEAR	MT6
5	SHAFT	M6-4
6	BOLT	M5-1
7	SPACER	MT6-6



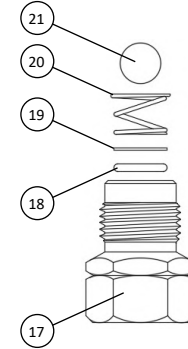
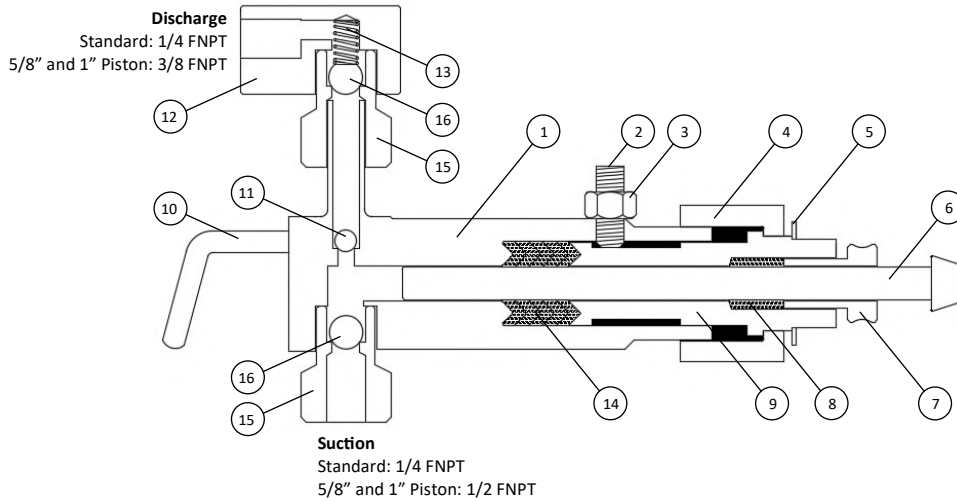
LINE CHECK VALVE		
	D461	D462Q
1	BODY / CAGE	D461B D176BQ
2	O-RING, TEFLON™	M170-55T* D170-5T*
3	RING	D461R D177
4	BALL, CERAMIC	D17-5C D17-6C
5	SPRING	D461S D178
6	SPRING	D18-1Y D462SQ
7	NIPPLE / BODY	D461A D462BFQ

*Alternate materials: Buna-N, Viton™, Neoprene, EPDM

MOTOR	HP	HZ	VOLTAGE	PHASE	ENCLOSURE	HAZARD CLASS	TEMP CODE
MR-T13B	1/3	60	115/208-230V AC	1	TEFC	-	-
MR-T33B	1/3	60	208/230-460V AC	3	TEFC	-	-
MR-E13B	1/3	60	115/208-230V AC	1	XPFC	CL 1 GR C,D / CL 2 GR E,F,G	T3B
MR-E33B	1/3	60	208/230-460V AC	3	XPFC	CL 1 GR D / CL 2 GR F,G	T3C

All images are for illustrative purposes. Actual product may differ.

MT/MTS #2 PUMP: SUBASSEMBLIES CONTINUED



UPGRADE:
Resilient check valve improves sealing capability on low viscosity fluids such as methanol

PISTON DIA (IN)	1/4			3/8			5/8		1	
	Standard	Y	Q	Standard	Y	Q	Y	Q	Y	Q
MT FLUID END ASSY	M164Z1	M164Z1Y	M164Z1Q	M160Z1	M160Z1Y	M160Z1Q	M161Z1Y	M161Z1Q	M161-8Z1Y	M161-8Z1Q
1 FLUID END BODY	LD164	LD164Y	LD164Q	LD160	LD160Y	LD160Q	M161Y	M161Q	M161-8Y	M161-8Q
2 SETSCREW	LD12-2	LD12-2Q	LD12-2Q	LD12-2	LD12-2Q	LD12-2Q	LD12-2Q	LD12-2Q	LD12-2Q	LD12-2Q
3 NUT	D47-1A	D47-1AQ	D47-1AQ	D47-1A	D47-1AQ	D47-1AQ	D47-1AQ	D47-1AQ	D47-1AQ	D47-1AQ
4 FLUID END NUT	LD12-4B	LD12-4BY	LD12-4BQ	LD12-4B	LD12-4BY	LD12-4BQ	M121-4BY	M121-4BQ	M121-4BY	M121-4BQ
5 GASKET	LD12-1	LD12-1	LD12-1	LD12-1	LD12-1	LD12-1	M121-1	M121-1	M121-18	M121-18
6 PISTON	M144Y	M144Y	M144Q	M14Y	M14Y	M14Q	M141Y	M141Q	M141-8Y	M141-8Q
7 ROPE PACKING NUT	LD15Y	LD15Y	LD15Q	LD15Y	LD15Y	LD15Q	M151Y	M151Q	M151-8Y	M151-8Q
8 ROPE PACKING, GRAPHITE	LD15-1	LD15-1	LD15-1*	LD15-1	LD15-1	LD15-1*	M151-1	M151-1*	M151-18	M151-18*
8 ROPE PACKING, TEFLON™	LD15-1T*	LD15-1T*	LD15-1T	LD15-1T*	LD15-1T*	LD15-1T	M151-1T*	M151-1T	M151-18T*	M151-18T
9 CYLINDER	LD124-4AY	LD124-4AY	LD124-4AQ	LD12-4AY	LD12-4AY	LD12-4AQ	M121-4AY	M121-4AQ	M121-48AY	M121-48AQ
10 PRIME VALVE	D16-2Y	D16-2Y	D16-2Q	D16-2Y	D16-2Y	D16-2Q	D16-2Y	D16-2Q	D16-2Y	D16-2Q
11 PRIME BALL, CERAMIC	D17-4C	D17-4C	D17-4C	D17-4C	D17-4C	D17-4C	D17-6C	D17-6C	D17-6C	D17-6C
11 PRIME BALL, TUNGSTEN	D17-4T*	D17-4T*	D17-4T*	D17-4T*	D17-4T*	D17-4T*	D17-6T*	D17-6T*	D17-6T*	D17-6T*
12 SQUARE ELL	D170-4	D170-4Y	D170-4Q	D170-4	D170-4Y	D170-4Q	M171-4Y	M171-4Q	M171-4Y	M171-4Q
13 SPRING	D18-1Y	D18-1Y	D18-1Y	D18-1Y	D18-1Y	D18-1Y	M181-1Y	M181-1Y	M181-1Y	M181-1Y
14 V-RING PACKING	HHHHH	BTBTB	VTVTV	HHHHH	BTBTB	VTVTV	BTBTB	VTVTV	BTBTB	VTVTV
PACKING, EPDM (B)	D124B*	D124B (3)	D124B*	D12B*	D12B (3)	D12B*	D121B (3)	D121B*	M121-8B (2)	M121-8B*
PACKING, BUNA-N (H)	D124H (5)	D124H*	D124H*	D12H (5)	D12H*	D12H*	D121H*	D121H*	M121-8H*	M121-8H*
PACKING, NEOPRENE (N)	D124N*	D124N*	D124N*	D12N*	D12N*	D12N*	D121N*	D121N*	M121-8N*	M121-8N*
PACKING, TEFLON™ (T)	D124T*	D124T (2)	D124T (2)	D12T*	D12T (2)	D12T (2)	D121T (2)	D121T (2)	M121-8T (1)	M121-8T (1)
PACKING, VITON™ (V)	D124V*	D124V*	D124V (3)	D12V*	D12V*	D12V (3)	D121V*	D121V (3)	M121-8V*	M121-8V (2)
CHECK VALVE	D17Y	D17Y	D17Q	D17Y	D17Y	D17Q	D172Y	D172Q	D172Y	D172Q
15 CAGE	D17BY	D17BY	D17BQ	D17BY	D17BY	D17BQ	D172B	D172BQ	D172B	D172BQ
16 CHECK BALL, CERAMIC	D17-6C	D17-6C	D17-6C	D17-6C	D17-6C	D17-6C	D171-2C	D171-2C	D171-2C	D171-2C
16 CHECK BALL, TUNGSTEN	D17-6T*	D17-6T*	D17-6T*	D17-6T*	D17-6T*	D17-6T*	D171-2T*	D171-2T*	D171-2T*	D171-2T*
RESILIENT CHECK VALVE	D176ZYT*	D176ZYT*	D176ZQT*	D176ZYT*	D176ZYT*	D176ZQT*	D172ZYT*	D172ZQT*	D172ZYT*	D172ZQT*
17 CAGE	D176B	D176B	D176BQ	D176B	D176B	D176BQ	D172B	D172BQ	D172B	D172BQ
18 O-RING, TEFLON™	D170-5T**	D170-5T**	D170-5T**	D170-5T**	D170-5T**	D170-5T**	D171-8T**	D171-8T**	D171-8T**	D171-8T**
19 RING	D177	D177	D177	D177	D177	D177	D173	D173	D173	D173
20 SPRING	D178	D178	D178	D178	D178	D178	D174	D174	D174	D174
21 CHECK BALL, CERAMIC	D17-6C	D17-6C	D17-6C	D17-6C	D17-6C	D17-6C	D171-2C	D171-2C	D171-2C	D171-2C
21 CHECK BALL, TUNGSTEN	D17-6T*	D17-6T*	D17-6T*	D17-6T*	D17-6T*	D17-6T*	D171-2T*	D171-2T*	D171-2T*	D171-2T*
MTS FLUID END ASSY	<i>MTS fluid end BOM same as above, except replace piston with the following</i>						M161Z1RY	M161Z1RQ	M161-8Z1RY	M161-8Z1RQ
6 PISTON							M141RY	M141RQ	M141-8RY	M141-8RQ

**Alternate materials: Buna-N, Viton™, Neoprene, EPDM

*Optional equipment, please specify when ordering

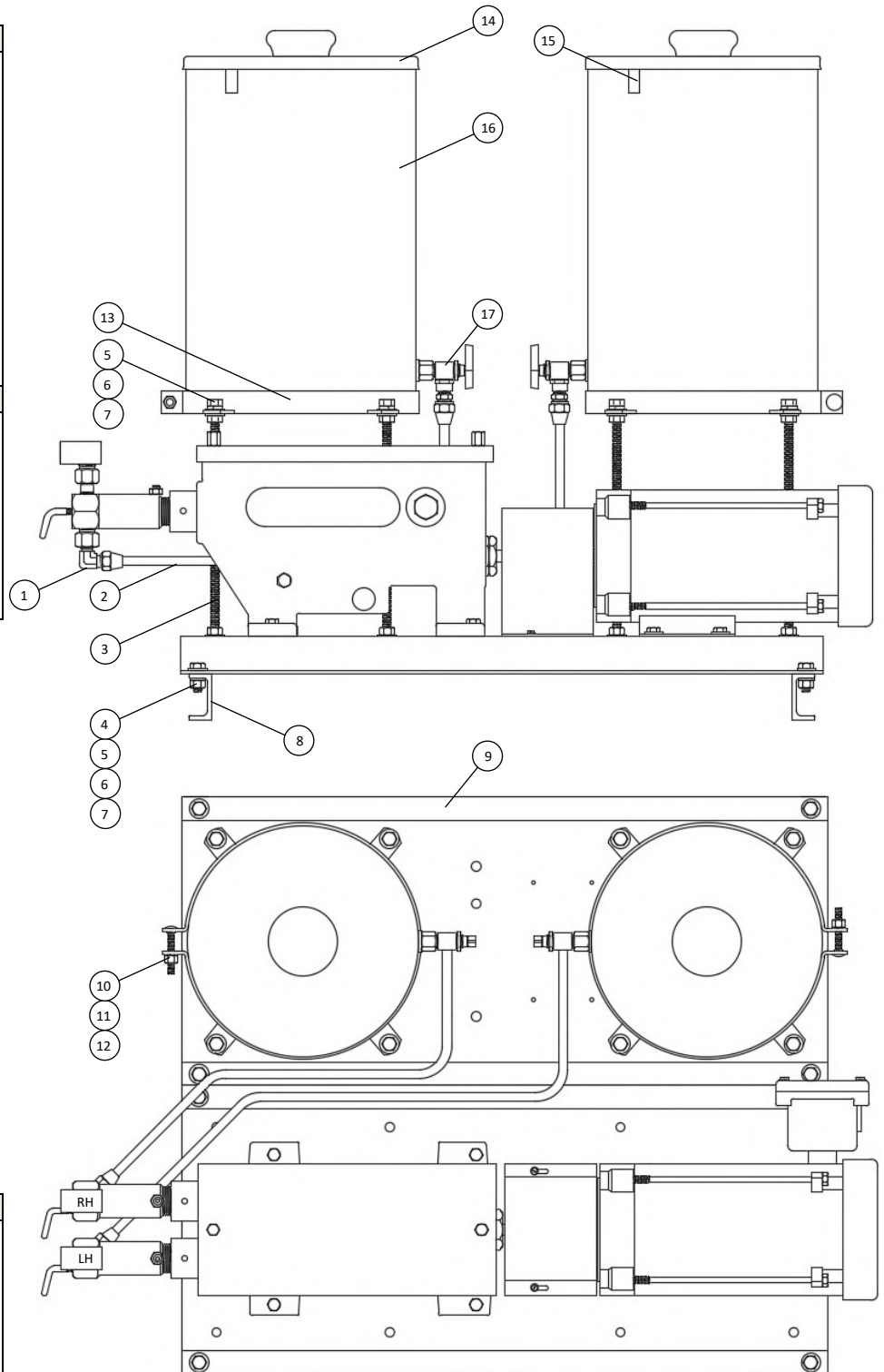
All images are for illustrative purposes. Actual product may differ.

MT/MTS #3 PUMP: PARTS LIST

Includes all parts from MT/MTS #2

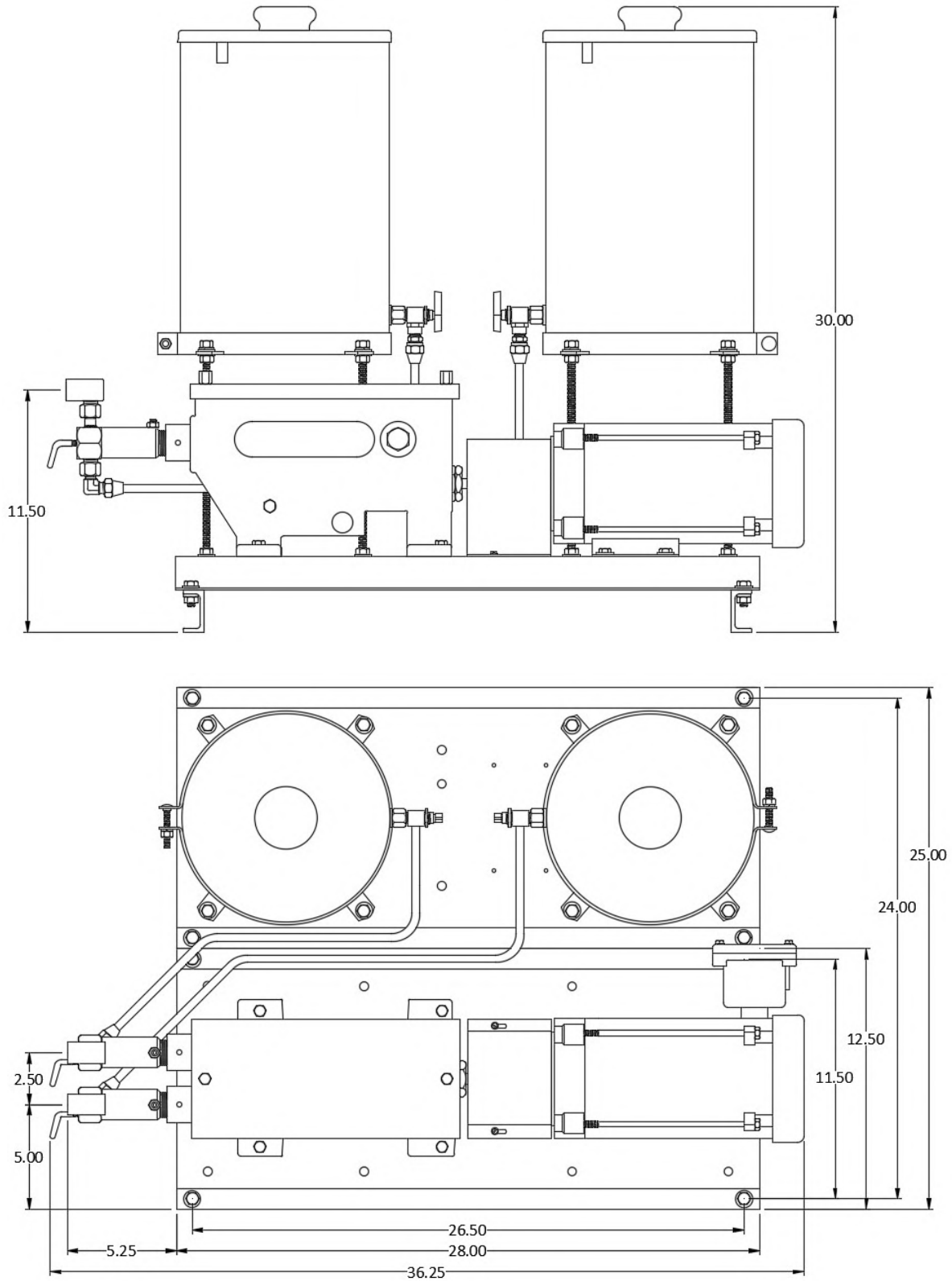
MT/MTS #3		
1	ELL	D17-3
2	TUBE ASSY	M35
3	STUD	M4C
4	BOLT	D1-4
5	WASHER	D21-2
6	LOCK WASHER	M4L
7	NUT	D1-2A
8	RAIL	M1R
9	BASE	M1
10	BOLT	D47-1C
11	LOCK WASHER	D47-1L
12	NUT	D47-1A
13	TANK BAND	D48-2Z
TANK ASSY D48ZY		
14	TANK LID WITH KNOB	D48-1Y
15	GAUGE STICK	D49
16	TANK	D48Y
17	TANK VALVE ASSY	D29
17	TANK VALVE ASSY*	D29Y*
NOT PICTURED		
	LEVEL SIGHT GAUGE*	929-1-S*

*Optional equipment



TANK VALVE ASSY	D29	D29Y
1	ADAPTER	D32-2
2	BALL VALVE	D29V
3	ADAPTER	D29A
4	GASKET	D28-8
5	NUT	D28-4Y
6	STRAINER	D28-3

All images are for illustrative purposes. Actual product may differ.



Western Chemical Pumps, Inc.
603 South Kansas Avenue, Olathe, KS 66061
913 - 829 - 1888 | sales@westernchemicalpumps.com

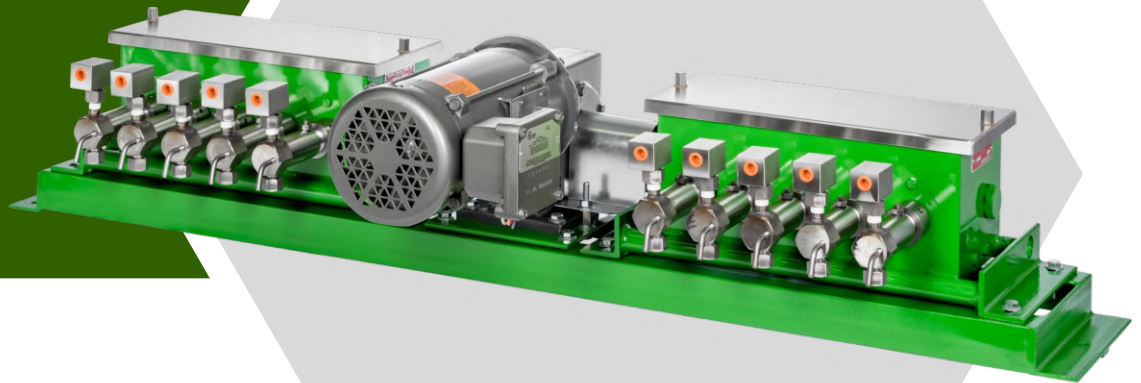
Dimensions are in inches. Actual product may have variance in measurements.
 All images are for illustrative purposes. Actual product may differ.

Western Chemical Pumps, Inc. reserves the right to make changes in specifications and features shown herein, or discontinue the product described at any time without notice or obligation. Contact your Western Chemical Pumps, Inc. distributor for the most current information.

CHEMICAL INJECTION PUMP

MOTOR DRIVEN

MULTI HEAD



MH

The model MH chemical injection pumps are designed to be driven by an electric motor. These positive displacement pumps have removable fluid ends with interchangeable check valves, and a removable stainless steel cover for easy maintenance on the drivetrain.

These multi head pumps accommodate 1-10 fluid ends providing higher flow rates or the ability to pump multiple different chemicals simultaneously. These pumps are expandable for future needs up to a maximum of 10 fluid ends and are available in various materials and piston sizes to meet your specific chemical injection requirements.

For decades, Western Chemical Pumps model MH pump has demonstrated reliable engineering and design, earning the trust of its users through rigorous testing and proven performance.

FEATURES

- ◆ 1 to 10 fluid end pump
- ◆ Simple dial controlled chemical injection flow rate for each individual fluid end
- ◆ Add on fluid ends when needed up to a max of 10 fluid ends
- ◆ Double piston seals with vented isolation to prevent chemical blow-by into pump box
- ◆ Capable of injecting up to 4,500 psi
- ◆ Stainless steel piston and check valves come standard for longer life

WESTERNTM



MH.10.2023

WESTERNCHEMICALPUMPS.COM

MH - 1

MH PUMP CONFIGURATIONS

2MH	10	Y	.250	PART NUMBER
↑	↑	↑	↑	Model
2MH				Electric Motor, Multi Head
				Number of Fluid Ends
	3			3 - (5 Fluid End Pump Box)
	4			4 - (5 Fluid End Pump Box)
	5			5 - (5 Fluid End Pump Box)
	6			6 - (10 Fluid End Pump Box)
	7			7 - (10 Fluid End Pump Box)
	8			8 - (10 Fluid End Pump Box)
	9			9 - (10 Fluid End Pump Box)
	10			10 - (10 Fluid End Pump Box)
				Fluid End Material
				Steel (standard)
		Y		Stainless Steel
		Q		316 Stainless Steel
				Piston Diameter
			.250	1/4"
			.375	3/8"

OPTIONS & UPGRADES

Material: Upgrade to Y or Q models for enhanced corrosion resistance

Piston Size: Multiple sizes available to fit your required injection flow rates and pressures

Resilient Seat Check Valves: Added O-ring provides better sealing capability, which is ideal for low viscosity fluids, such as methanol

Packing Seals: Buna-N, EPDM, Neoprene, PTFE (Teflon™), FKM (Viton™)

Rope Packing: Graphite impregnated or PTFE (Teflon™) rope

Prime Ball: Ceramic or tungsten

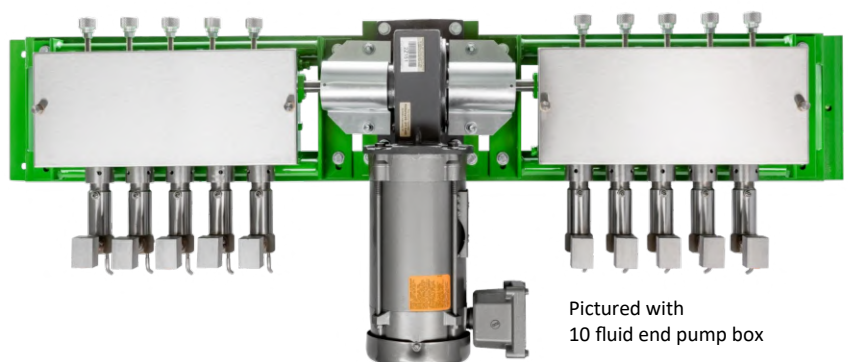
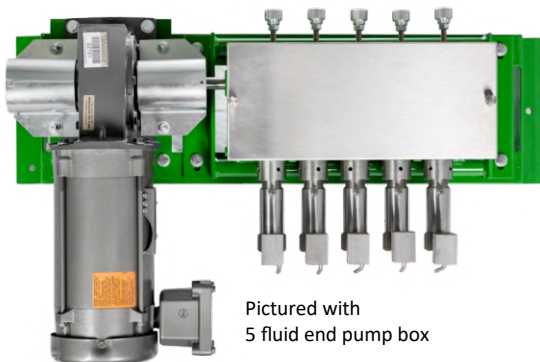
Motors: Multiple motor models available to fit your power supply

Coupler: Option available that is ideal for cold weather environments

Other unique or special order materials are available to fit your needs. Please inquire with your Western Chemical Pumps, Inc. distributor. Specify desired options when placing order.

PER HEAD			
PISTON DIA (IN)	# OF FLUID ENDS	MAX DISCHARGE PRESSURE (PSI)	FLOW RATE MIN - MAX (QTS / DAY)
1/4	5 or less	4,500	0 - 24.0
3/8	5 or less	2,000	0 - 55.0
1/4	6 or more	2,250	0 - 24.0
3/8	6 or more	1,000	0 - 55.0

PER HEAD		
FLOW RATE (QTS/ DAY)		
FLOW CONTROL DIAL ROTATIONS	1/4" PISTON	3/8" PISTON
1/2	0.6	1.4
3/4	0.9	2.0
1	1.2	2.8
2	2.4	5.5
3	3.6	8.3
4	4.8	11.0
8	9.6	22.0
12	14.4	33.0
16	19.2	44.0
20	24.0	55.0



CAUTION

3 PHASE MOTORS REVERSE DIRECTION WHEN POWER WIRES ARE INTERCHANGED. CHECK ROTATION OF MOTOR IMMEDIATELY AFTER ANY ELECTRICAL MODIFICATIONS.

ENSURE PUMP IS ELECTRICALLY ISOLATED WITH PROPER LOCKOUT / TAGOUT PROCEDURES PRIOR TO PERFORMING WORK.

ENSURE CHECK VALVE FLOW IS IN THE DIRECTION OF THE ARROW. INCORRECT DIRECTION COULD CAUSE PUMP TO OVER PRESSURE.

INSTALLATION & OPERATION

Securely mount base (MH1, MH1-10) to concrete pad or platform. Ensure motor and pump shaft remain in alignment during installation. Misalignment could cause premature wear on coupler and bearings.

Fill the pump box with SAE 20 or SAE 30 oil. The oil level should partially submerge the piston.

Connect the motor to power following the wiring instructions printed on the motor.

Connect the suction and discharge lines to the fluid end. Adjust the flow control dial to the maximum stroke length during priming. Open the prime valve (D16-2Y) and run the pump until gas is purged from the system. Bubbles and chemical may flow out of the prime valve opening. If trouble is experienced during priming, use a trigger type oil can to force oil through the bleed hole into the fluid end. This may speed up the priming process. Close the prime valve after priming is complete.

FLOW RATE CONTROL

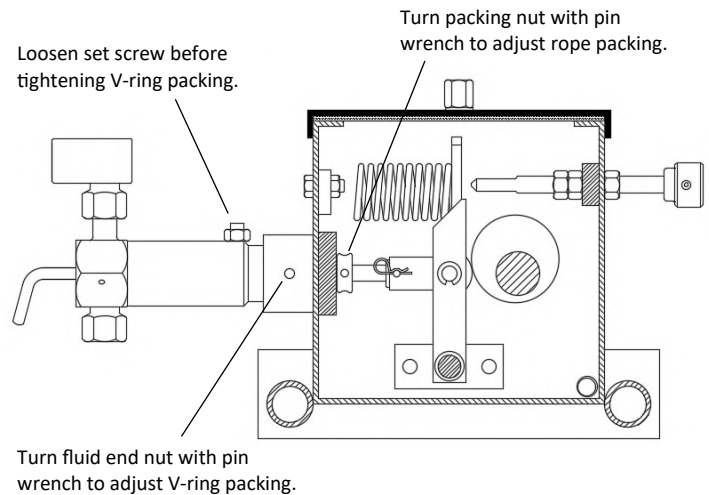
The flow rate can be adjusted from no stroke to full stroke in fine increments by rotating the flow control dial. Rotate the flow control dial clockwise (in) to decrease the flow rate and counterclockwise (out) to increase the flow rate.

To set an approximated flow rate, turn flow control dial clockwise (in) just until the bearing (M8) lifts off the camshaft (MH8) and the piston has no travel. Every rotation counterclockwise (out) will increase the flow rate. By counting the number of counterclockwise rotations and using the provided flow rate table, an approximate flow rate can be set. There are 20 rotations of the flow control dial from no stroke to full stroke of the piston.

MAINTENANCE & TROUBLESHOOTING

Chemical Leakage: This can be detected by chemical leaking around the fluid end nut (LD12-4B). To correct this issue, tighten the V-ring packing (D12B). First, loosen the setscrew (LD12-2) and nut (D47-1A) on top of the fluid end. Using the supplied packing wrench (D44-3), insert in holes of fluid end nut and rotate. Hold fluid end upright while rotating the fluid end nut. The rotation will compress the V-ring packing around the piston. Tighten the setscrew and nut on top of the fluid end. Overtightening the V-ring packing can prevent the piston from completing a full stroke.

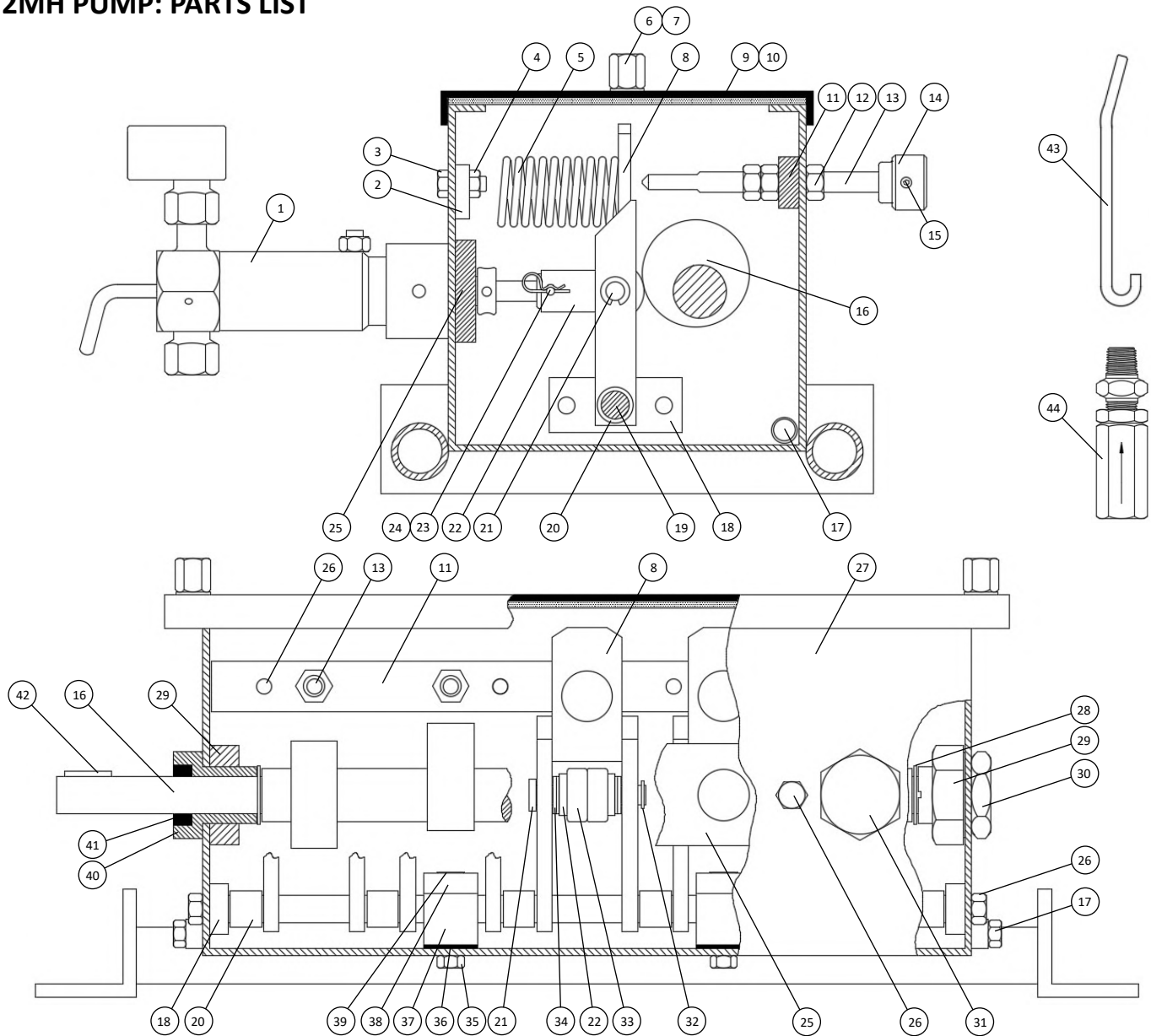
Preventing Pump Box Oil Leakage Into Fluid End: This can be detected by oil leaking around the fluid end nut (LD12-4B). To correct this issue, tighten the rope packing (LD15-1). First, remove the cover (MH2-2) of the pump. Using the packing wrench (D44-3), insert in holes of packing nut (LD15Y) and rotate. Do not overtighten rope packing.



TIPS FOR BEST OPERATION

- Plan ahead for proper pump mounting location
- Short flooded suction lines and clean chemicals with no debris perform best
- Chemical lines should be rigid and have no abrupt change in elevation to prevent trapping gas bubbles
- Fluid end must be vertical for ball check valves to operate properly
- Keep pump and motor shaft properly aligned
- Install motor cutoff switch within easy reach of pump
- Keep oil clean and at the recommended fill level to partially submerge piston

2MH PUMP: PARTS LIST



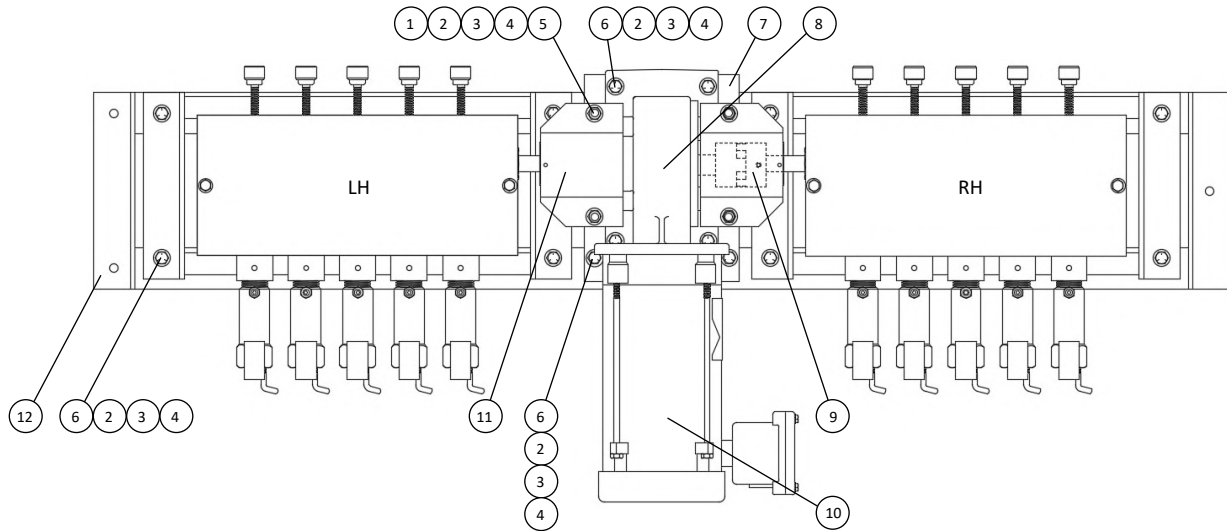
2MH							
1 FLUID END	***	12 NUT	D1-2A	23 PIN	MH13-1	34 SPACER	LD5-3M
2 SLUG	LD10-1	13 CONTROL SCREW	LD7	24 COTTER PIN	LD13-2	35 SCREW	MH5-1H
3 SCREW	M13-1	14 KNOB	LD7-1	25 CYLINDER BAR	MH12-5	36 GASKET	MH5-1G
4 NUT	M26-1B	15 SETSCREW	LD7-1A	26 BOLT	DFF44-2	37 PIVOT RETAINER	MH5-1D
5 SPRING	MH100	16 CAMSHAFT	MH8	27 PUMP BOX	MH2	38 PIVOT HOLD	MH5-1E
6 THUMB SCREW	LD23-2	17 DRAIN PLUG	M2-2	28 SHIM WASHER	M6-2W	39 SCREW	MH5-1F
7 GASKET	LD23-2A	18 BEARING BLOCK	MH5-1B	29 NUT	MH9-4	40 BEARING RETAINER	MH9A
8 YOKE	MH5M	19 PIVOT SHAFT	MH5-1	30 BEARING CAP	MH9-1	41 SEAL	MH9-2A
9 GASKET	MH2-2A	20 SPACER	MH5-1C	31 PLUG	MH12-6	42 KEY	MH10-1
10 COVER	MH2-2B	21 SHAFT	MH5-2M	32 RETAINING RING	M20D4	43 PACKING WRENCH	D44-3
11 CONTROL SCREW BAR	MH7-4	22 LINK	MH13M	33 BEARING	LD6M	44 LINE CHECK VALVE	D461

Subassembly detail shown in following drawings

*** See subassembly drawing for part number

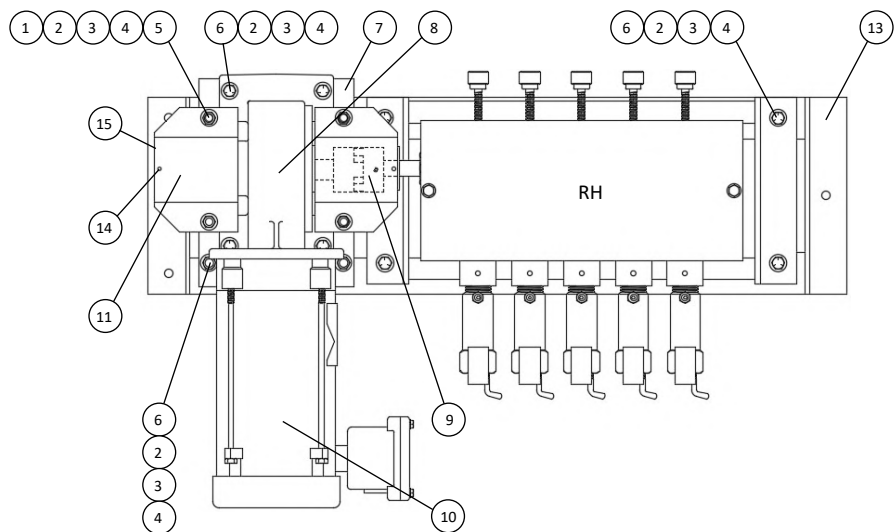
All images are for illustrative purposes. Actual product may differ.

2MH PUMP: PARTS LIST CONTINUED



2MH		
1	BOLT	D1-2
2	LOCK WASHER	M4L
3	WASHER	D21-2
4	NUT 3/8	D1-2A
5	DOUBLE NUT	MH10-3
6	BOLT	LD8-3
7	PLATE	MH1A
8	GEAR REDUCER	MHRDC1
9	COUPLING	MH10
10	MOTOR	***
11	COUPLING GUARD	MH10-2
12	10HD FRAME	MH1-10
13	5HD FRAME	MH1
14	SCREW	MH10-5
15	COUPLING GUARD END	MH10-4

*** See motor table for part number



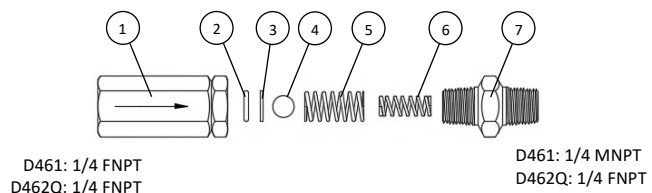
2MH

MOTOR	HP	HZ	VOLTAGE	PHASE	ENCLOSURE	HAZARD CLASS	TEMP CODE
MR-T12C	1/2	60	115/208-230V AC	1	TEFC	-	-
MR-T32C	1/2	60	208/230-460V AC	3	TEFC	-	-
MR-E12C	1/2	60	115/208-230V AC	1	XPFC	CL 1 GR C,D / CL 2 GR E,F,G	T3B
MR-E32C	1/2	60	208/230-460V AC	3	XPFC	CL 1 GR D / CL 2 GR F,G	T3C

2MH PUMP: SUBASSEMBLIES

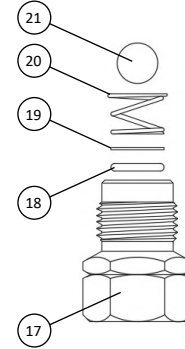
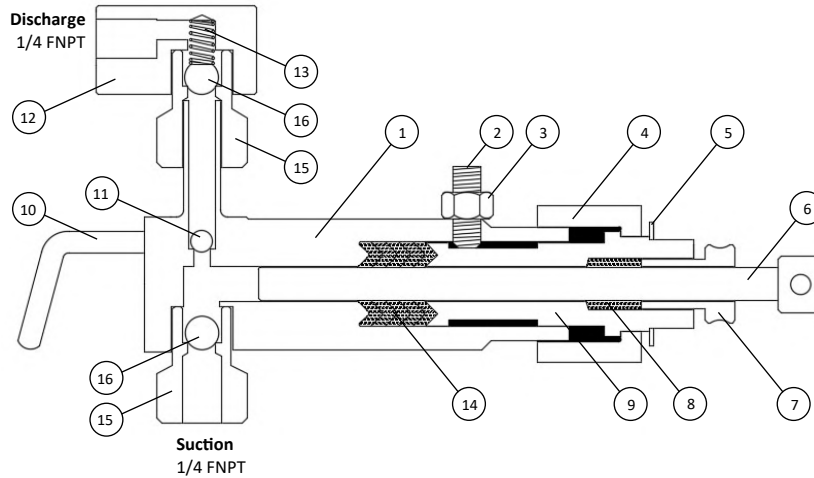
LINE	CHECK VALVE	D461	D462Q
1	BODY / CAGE	D461B	D176BQ
2	O-RING, TEFLON™	M170-55T*	D170-5T*
3	RING	D461R	D177
4	BALL, CERAMIC	D17-5C	D17-6C
5	SPRING	D461S	D178
6	SPRING	D18-1Y	D462SQ
7	NIPPLE / BODY	D461A	D462BFQ

*Alternate materials: Buna-N, Viton™, Neoprene, EPDM



All images are for illustrative purposes. Actual product may differ.

2MH PUMP: SUBASSEMBLIES CONTINUED



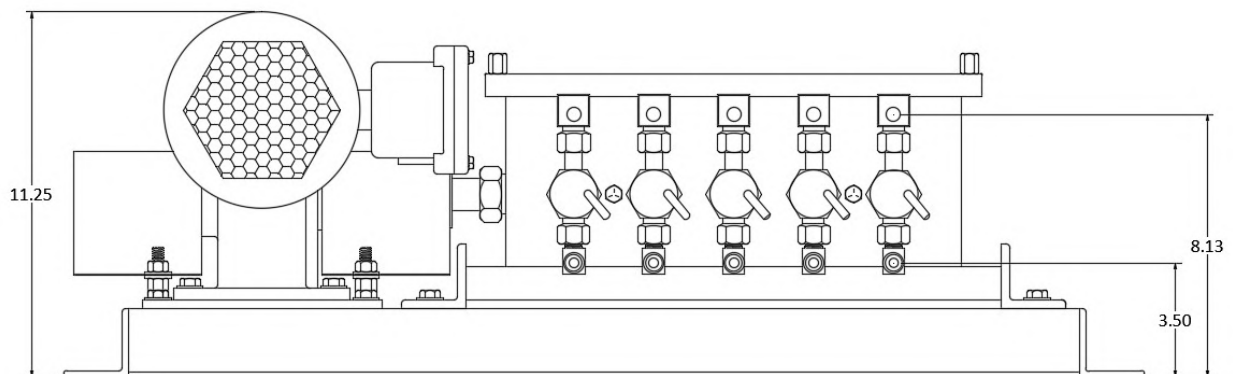
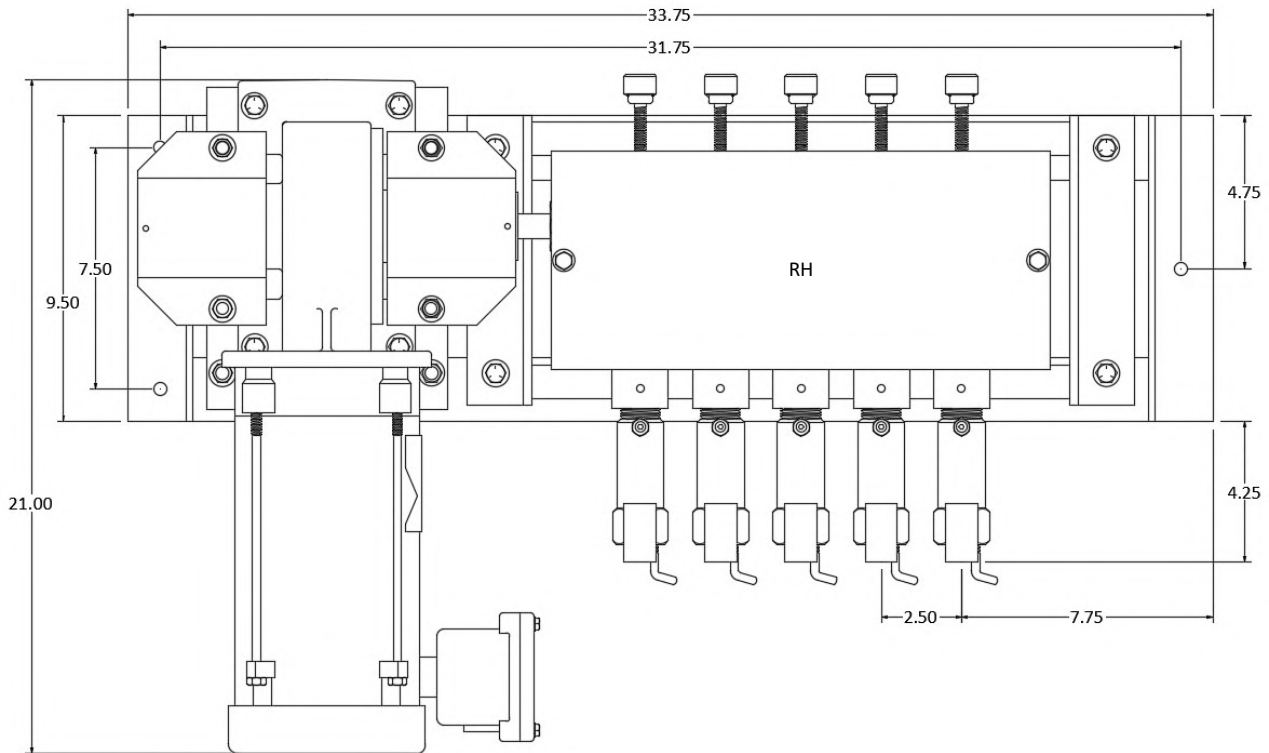
UPGRADE:
Resilient check valve improves sealing capability on low viscosity fluids such as methanol

PISTON DIA (IN) MATERIAL	1/4			3/8		
	Standard	Y	Q	Standard	Y	Q
MH FLUID END ASSY	MH164Z1	MH164Z1Y	MH164Z1Q	MH160Z1	MH160Z1Y	MH160Z1Q
1 FLUID END BODY	LD164	LD164Y	LD164Q	LD160	LD160Y	LD160Q
2 SETSCREW	LD12-2	LD12-2Q	LD12-2Q	LD12-2	LD12-2Q	LD12-2Q
3 NUT	D47-1A	D47-1AQ	D47-1AQ	D47-1A	D47-1AQ	D47-1AQ
4 FLUID END NUT	LD12-4B	LD12-4BY	LD12-4BQ	LD12-4B	LD12-4BY	LD12-4BQ
5 GASKET	LD12-1	LD12-1	LD12-1	LD12-1	LD12-1	LD12-1
6 PISTON	MH144Y	MH144Y	MH144Q	MH14Y	MH14Y	MH14Q
7 ROPE PACKING NUT	LD15Y	LD15Y	LD15Q	LD15Y	LD15Y	LD15Q
8 ROPE PACKING, GRAPHITE	LD15-1	LD15-1	LD15-1*	LD15-1	LD15-1	LD15-1*
8 ROPE PACKING, TEFLON™	LD15-1T*	LD15-1T*	LD15-1T	LD15-1T*	LD15-1T*	LD15-1T
9 CYLINDER	LD124-4AY	LD124-4AY	LD124-4AQ	LD12-4AY	LD12-4AY	LD12-4AQ
10 PRIME VALVE	D16-2Y	D16-2Y	D16-2Q	D16-2Y	D16-2Y	D16-2Q
11 PRIME BALL, CERAMIC	D17-4C	D17-4C	D17-4C	D17-4C	D17-4C	D17-4C
11 PRIME BALL, TUNGSTEN	D17-4T*	D17-4T*	D17-4T*	D17-4T*	D17-4T*	D17-4T*
12 SQUARE ELL	D170-4	D170-4Y	D170-4Q	D170-4	D170-4Y	D170-4Q
13 SPRING	D18-1Y	D18-1Y	D18-1Y	D18-1Y	D18-1Y	D18-1Y
14 V-RING PACKING	HHHHH	BTBTB	VTVTV	HHHHH	BTBTB	VTVTV
PACKING, EPDM (B)	D124B*	D124B (3)	D124B*	D12B*	D12B (3)	D12B*
PACKING, BUNA-N (H)	D124H (5)	D124H*	D124H*	D12H (5)	D12H*	D12H*
PACKING, NEOPRENE (N)	D124N*	D124N*	D124N*	D12N*	D12N*	D12N*
PACKING, TEFLON™ (T)	D124T*	D124T (2)	D124T (2)	D12T*	D12T (2)	D12T (2)
PACKING, VITON™ (V)	D124V*	D124V*	D124V (3)	D12V*	D12V*	D12V (3)
CHECK VALVE	D17Y	D17Y	D17Q	D17Y	D17Y	D17Q
15 VALVE CAGE	D17BY	D17BY	D17BQ	D17BY	D17BY	D17BQ
16 CHECK BALL, CERAMIC	D17-6C	D17-6C	D17-6C	D17-6C	D17-6C	D17-6C
16 CHECK BALL, TUNGSTEN	D17-6T*	D17-6T*	D17-6T*	D17-6T*	D17-6T*	D17-6T*
RESILIENT CHECK VALVE	D176ZYT*	D176ZYT*	D176ZQT*	D176ZYT*	D176ZYT*	D176ZQT*
17 CAGE	D176B	D176B	D176BQ	D176B	D176B	D176BQ
18 O-RING, TEFLON™	D170-5T**	D170-5T**	D170-5T**	D170-5T**	D170-5T**	D170-5T**
19 RING	D177	D177	D177	D177	D177	D177
20 SPRING	D178	D178	D178	D178	D178	D178
21 CHECK BALL, CERAMIC	D17-6C	D17-6C	D17-6C	D17-6C	D17-6C	D17-6C
21 CHECK BALL, TUNGSTEN	D17-6T*	D17-6T*	D17-6T*	D17-6T*	D17-6T*	D17-6T*

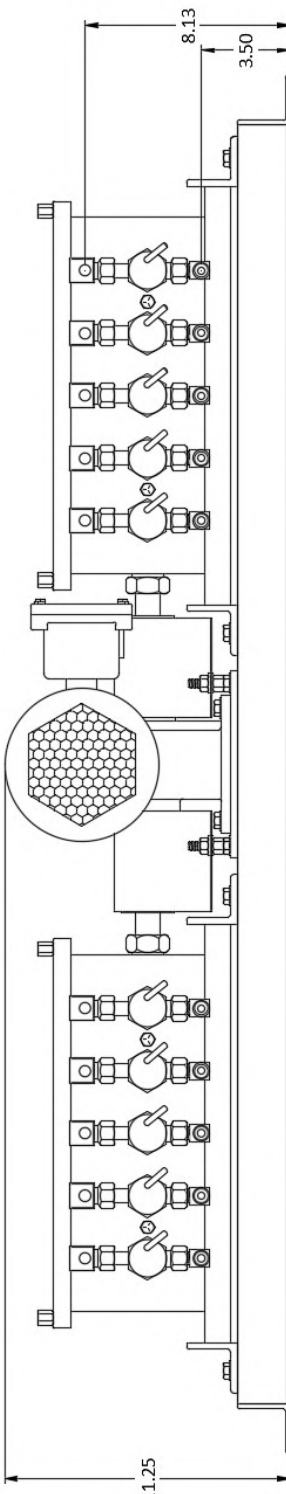
*Optional equipment, please specify when ordering

**Alternate materials: Buna-N, Viton™, Neoprene, EPDM

All images are for illustrative purposes. Actual product may differ.



Dimensions are in inches. Actual product may have variance in measurements.
All images are for illustrative purposes. Actual product may differ.



Dimensions are in inches. Actual product may have variance in measurements.
All images are for illustrative purposes. Actual product may differ.

MH.10.2023

CHEMICAL INJECTION PUMP

GAS DRIVEN

SINGLE HEAD



DFF

The model DFF chemical injection pumps are designed to be driven by pressurized gas. These positive displacement pumps have removable fluid ends with interchangeable inlet and discharge check valves. All moving components are enclosed requiring no lubrication providing low maintenance and excellent reliability.

The pumps are available in various materials and piston sizes to meet your specific chemical injection requirements. They can also be equipped with chemical tanks and an optional exhaust gas recovery (EGR) to capture exhaust gases.

For decades, Western Chemical Pumps model DFF pump has demonstrated reliable engineering and design, earning the trust of its users through rigorous testing and proven performance.

FEATURES

- ◆ Simple exhaust valve dial controlled chemical injection flow rate
- ◆ No lubrication required
- ◆ Exhaust gas recovery (EGR) option
- ◆ Sour gas trim option to improve corrosion resistance
- ◆ High pressure option up to 10,000 psi
- ◆ All models include inlet regulator and condensate drip pot
- ◆ Stainless steel piston and check valves come standard for longer life

WESTERN

TM



DFF PUMP CONFIGURATIONS

DFF	EG	3/8	#2	Y	PART NUMBER
↑	↑	↑	↑	↑	Model
DFF					Gas Driven Pump
					Exhaust Gas Recovery Kit
	EG				No EGR Kit
					EGR Kit
					Piston Diameter
		1/4			1/4"
		3/8			3/8"
		5/8			5/8"
		1			1"
		12-2			3/8" - High Pressure 10,000psi
					Attachments
			#1		Tank
			#2		No Tank
					Fluid End Material
				Y	Steel (standard)
				Y	Stainless Steel
				Q	316 Stainless Steel

OPTIONS & UPGRADES

Exhaust Gas Recovery (EGR): Capture the motive gas as it is exhausted

Sour Gas Trim: Option that replaces brass components exposed to motive gas with stainless steel

High Pressure: Model 12-2 is a 3/8" piston that operates up to a maximum pressure of 10,000 psi

Material: Upgrade to Y or Q models for enhanced corrosion resistance

Piston Size: Multiple sizes available to fit your required injection flow rates and pressures

Resilient Seat Check Valves: Added O-ring provides better sealing capability, which is ideal for low viscosity fluids, such as methanol

Packing Seals: Buna-N, EPDM, Neoprene, PTFE (Teflon™), FKM (Viton™)

Prime Ball: Ceramic or tungsten

Tank: Optional 5 gallon stainless steel tank

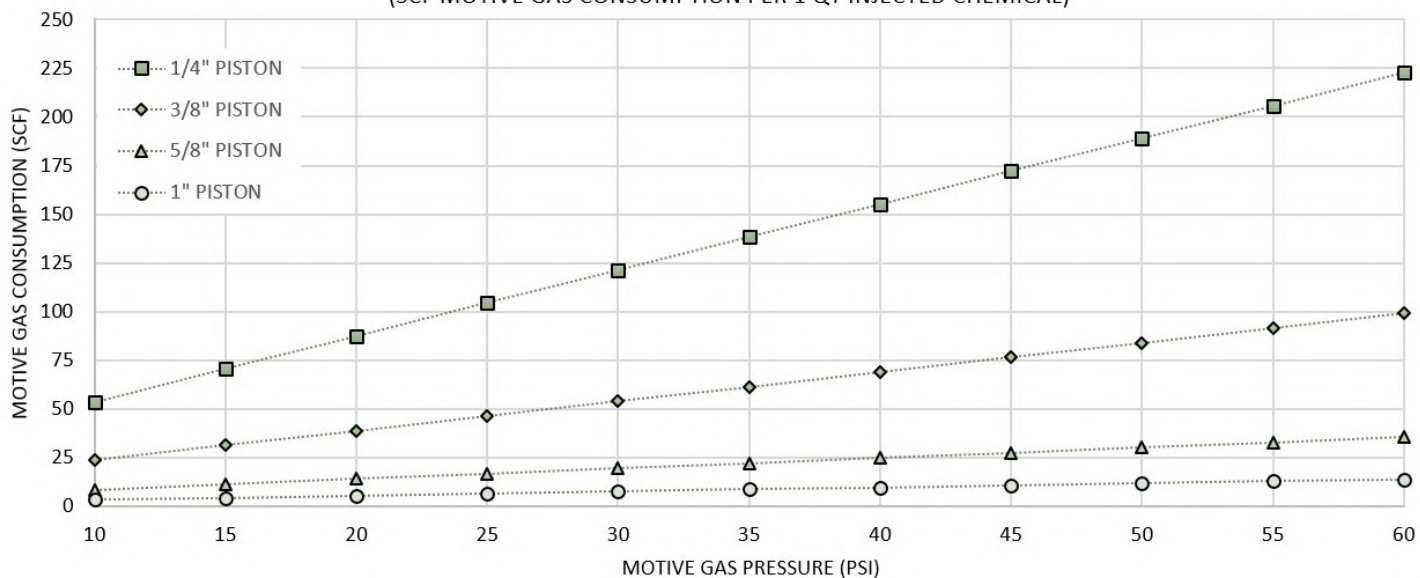
Other unique or special order materials are available to fit your needs. Please inquire with your Western Chemical Pumps, Inc. distributor. Specify desired options when placing order.

PISTON DIA (IN)	MAX DISCHARGE PRESSURE (PSI)	FLOW RATE MIN - MAX (QTS / DAY)
1/4	5,000	0.2 - 51.4
3/8	5,000	0.5 - 115.6
3/8 (HP)	10,000	0.5 - 57.8
5/8	3,000	2.0 - 321.1
1	2,000	4.0 - 822.1

PISTON DIA (IN)	FLOW RATE (QTS / DAY)
1/4	= SPM x 1.07
3/8	= SPM x 2.41
5/8	= SPM x 6.69
1	= SPM x 17.13

SPM: Strokes per minute

DFF APPROXIMATE MOTIVE GAS CONSUMPTION
(SCF MOTIVE GAS CONSUMPTION PER 1 QT INJECTED CHEMICAL)



CAUTION

ENSURE CHECK VALVE FLOW IS IN THE DIRECTION OF THE ARROW. INCORRECT DIRECTION COULD CAUSE PUMP TO OVER PRESSURE.

PUMP IS NOT EQUIPPED WITH A DISCHARGE PRESSURE RELIEF VALVE. A PRESSURE RELIEF VALVE SHOULD BE INSTALLED AS CLOSE TO THE PUMP CHEMICAL DISCHARGE PORT AS POSSIBLE.

PUMP IS NOT EQUIPPED WITH AN INLET GAS PRESSURE RELIEF VALVE. IF INLET GAS PRESSURE EXCEEDS 70 PSI, A PRESSURE RELIEF VALVE SHOULD BE INSTALLED BETWEEN REGULATOR AND TOP PLATE INLET.

IF MOTIVE GAS IS FLAMMABLE, DO NOT OPERATE PUMP IN AN ENCLOSED AREA WITHOUT PROPER VENTILATION.

When the motive gas that is used to power a DFF pump is flammable, the exhaust gas will be flammable. If the pump is to be installed in an enclosure and powered with a hazardous gas, additional safety precautions must be taken.

The hazardous exhaust gas must be exhausted to a proper ventilation area and must never be allowed to accumulate in an enclosed area.

The vent hole on the bottom casting is required by design for the pump to function. However, in the event of a diaphragm failure, the hazardous gas will be exhausted thru this vent hole. It is necessary that this port be routed to a proper ventilation area.

When the drain valve on the bottom of the drip pot (D27) is opened for purging, hazardous gas will be released. It is necessary that this be exhausted to a proper ventilation area.

Any electrical wiring in the enclosure should be explosion proof and conform to the National Electrical Code. Perform a soap bubble test on all ventilation piping to ensure no leaks. Remove all possible sources of ignition and use extreme caution when entering the enclosure.

INSTALLATION & OPERATION

It is not necessary to bolt the pump to a base since there is little vibration during operation. The pump should rest on a level surface.

Connect inlet motive gas line. Regulator inlet pressure should not exceed 6,000 psi. Minimum pressure to power pump is 15 psi.

Connect the suction and discharge lines to the fluid end. Open the prime valve (D16-2Y). Open the exhaust petcock valve (D45) by turning handle perpendicular to the flow. Turn on gas flow to the regulator (RM55) and adjust flow to 50 psi on the pressure gauge (D52). The pump should begin stroking around 15 psi. After several strokes, a mixture of air and chemical should be coming from the prime valve hole. Ensure all downstream valves are open. When all the air is ejected from the fluid end, close the prime valve. The pump will now build up discharge pressure. Close the exhaust petcock valve to control flow via the needle valve (D261).

FLOW RATE CONTROL

The chemical injection flow rate can be calculated by counting the strokes per minute and using the provided table.

To adjust the strokes per minute, rotate the needle valve knob (D262). Rotate counterclockwise to increase the exhaust gas flow and increase the stroke rate of the pump. Rotate clockwise to decrease exhaust gas flow and decrease the stroke rate of the pump.

The motive gas pressure can also impact the stroke rate of the pump. Increase the motive gas pressure by rotating the regulator control handle. Increasing pressure will increase the stroke rate of the pump.

Decreasing pressure will decrease the stroke rate of the pump. It is recommended to keep the motive gas pressure between 15 to 60 psi.

The chemical discharge pressure of the pump can impact the stroke rate. Higher discharge pressure will decrease the stroke rate. Lower discharge pressures will increase the stroke rate.

The maximum stroke rate of the pump is 48 strokes per minute. To achieve the maximum stated flow rates, the motive gas inlet pressure should be 60 psi and the pump discharge back pressure should be near 0 psi.

MAINTENANCE & TROUBLESHOOTING

Chemical Leakage: This can be detected by chemical leaking around the packing nut (DFF44) or the vent hole in the bottom casting. To correct this issue, tighten the packing (D12B). Using the supplied packing wrench (D44-3), insert in holes of packing nut and rotate. Hold fluid end steady while rotating the packing nut. The rotation will compress the packing around the piston. Overtightening the packing can impact the pump's performance and decrease the life of the packing. If leak persists, remove fluid end and inspect for worn packing and corroded parts.

Pump Not Stroking: Check for proper motive gas supply to the pump. Open exhaust petcock valve (D45) and open prime valve (D16-2Y). If pump still does not stroke, loosen the packing nut (DFF44). If pump still does not stroke, turn off motive gas supply and remove cap (DFF39). Inspect the location of the diaphragm shaft (DFF3) and spring nut (DFF5). If they are not protruding well above the top plate (DFF1P) as shown in the following DFF pump cutaway illustration, then the pump is stuck in full stroke position.

Pump Stuck In Full Stroke Position: Inspect for a broken spring (D13). Ensure packing (D12B) is not overtightened by loosening the packing nut (DFF44). Inspect for internal corrosion between the guide portion of the piston nut and bottom casting. Ensure the vent hole on the bottom casting is not blocked, which can create a vacuum preventing the piston from stroking.

Pump Operating, Not Moving Chemical: Open prime valve (D16-2Y) and inspect for pump function against atmospheric pressure. If pump is functioning against atmospheric pressure, inspect the inlet check valve (D17Y) for proper sealing. If pump not functioning against atmospheric pressure, inspect the chemical supply to the pump. Inlet lines should be flooded and free flowing into the pump.

Unable to Slow Stroke Rate: Ensure exhaust petcock valve (D45) handle is parallel to the flow of gas in the closed position. Rotate the needle valve knob (D262) clockwise, all the way in. If stroke rate does not slow, inspect for gas leaking from the top plate assembly with soapy water and check for bubbles.

TIPS FOR BEST OPERATION

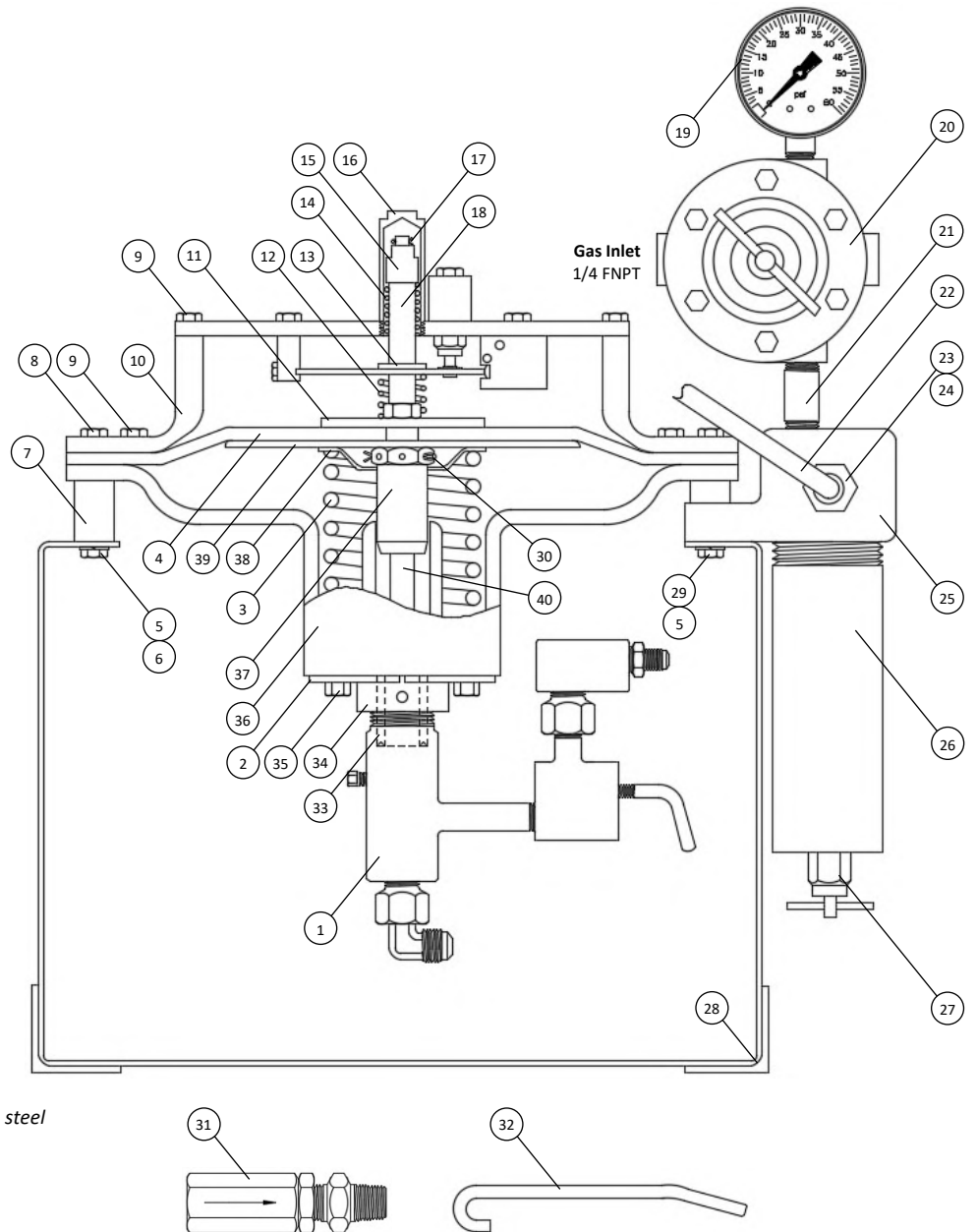
- Plan ahead for proper pump mounting location
- Short flooded suction lines and clean chemicals with no debris perform best
- Chemical lines should be rigid and have no abrupt change in elevation to prevent trapping gas bubbles
- Fluid end must be vertical for ball check valves to operate properly
- Install a gas cutoff valve before regulator to stop pump instead of using the regulator valve. This will save regulator pressure setting.

DFF #2 PUMP: PARTS LIST

DFF #2	STD	SOUR GAS*
1 FLUID END	***	
2 SPLIT RING	DFF44-1	
3 SPRING	D13	
4 DIAPHRAGM	D9	
5 LOCK WASHER	M4L	
6 NUT	D1-2A	
7 SPACER	D1-3	
8 BOLT	D1-2	
9 BOLT	D1-4	
10 TOP CASTING	DFF1	
11 PLATE	D8	
12 SPRING	DFF7	
13 WASHER	D6	
14 SPRING	D5-1	
15 SPRING NUT	DFF5	DFF5S
16 CAP	DFF39	DFF39S
17 PIN	DFF4	
18 SHAFT	DFF3	DFF3S
19 GAUGE	D52	D52Y
20 REGULATOR	RM55	RM55Q
21 NIPPLE	D54	
22 TUBE	D33A	SST304
23 ADAPTER	D32-2	D32-2Y
24 FLARE NUT	D33-1	
25 CAP, DRIP POT	D27-1	
26 DRIP POT	D27	
27 DRAIN COCK	D45N	
28 STAND	D47-3	
29 BOLT	D1-1	
30 COTTER PIN	D11-2	
31 LINE CHECK VALVE	D461	
32 PACKING WRENCH	D44-3	

*** See subassembly drawing for part number

*Option replaces brass parts in first column with steel



PISTON DIA (IN) MATERIAL	1/4			3/8			3/8 HIGH PRESSURE			5/8		1	
	Standard	Y	Q	Standard	Y	Q	Standard	Y	Q	Y	Q	Standard	Y
33 CYLINDER	D224-1Y	D224-1Y	D224-1Q	-	D224-3Y	D224-3Q	D224-3Y	D224-3Y	D224-3Q	D224-5Y	D224-5Q	DFF121-8Y	DFF121-8Y
34 PACKING NUT	DFF44	DFF44Y	DFF44Y	DFF44	DFF44Y	DFF44Y	DFF441Y	DFF441Y	DFF441Y	DFF441Y	DFF441Y	DFF44-48	DFF44-48Y
35 SCREW	DFF44-2	DFF44-2	DFF44-2	DFF44-2	DFF44-2	DFF44-2	DFF44-6	DFF44-6	DFF44-6	DFF44-2	DFF44-2	DFF44-2	DFF44-2
36 LOWER CASTING	D224A	D224A	D224A	DFF2A	D224A	D224A	DFF2-12A	DFF2-12A	DFF2-12A	DFF221AY	DFF221AY	DFF2-8	DFF2-8
37 PISTON NUT	D11-1	D11-1	D11-1	D11-1	D11-1	D11-1	D11-1	D11-1	D11-1	D111-1	D111-1	DFF11-48	DFF11-48
38 GUIDE WASHER	D14	D14	D14	D14	D14	D14	D14	D14	D14	D14	D14	D14-8	D14-8
39 PLATE	D10	D10	D10	D10	D10	D10	D10-1	D10-1	D10-1	D10	D10	D10	D10
40 PISTON	D114Y	D114Y	D114Q	D11Y	D11Y	D11Q	D11Y	D11Y	D11Q	D111Y	D111Q	DFF11-8Y	DFF11-8Y

All images are for illustrative purposes. Actual product may differ.

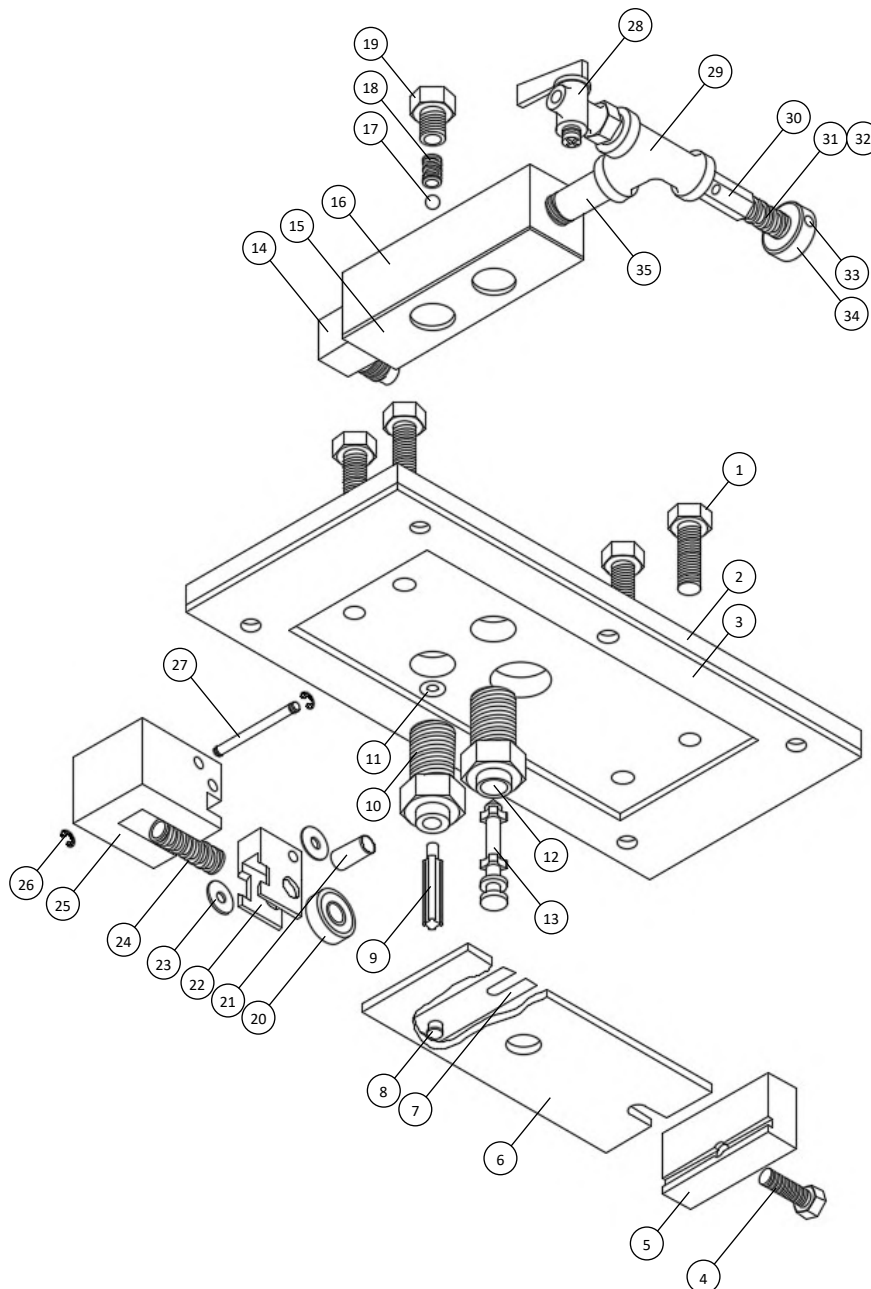
DFF #2 PUMP: SUBASSEMBLIES

TOP PLATE ASSY	DFF1PZ	SOUR GAS*
1 BOLT	D1-1	
2 TOP PLATE	DFF1P	
3 GASKET, TOP PLATE	DFF1G	
4 BOLT	LD10-2	
5 PIVOT BLOCK	DFF21	
6 TRIP BAR	DFF20A	
7 SPRING	D20-1	
8 RIVET	D20-2	
9 PUSHROD	DFF40	
10 CAGE, INLET VALVE	DFF40-10	DFF40-10S
11 O-RING, VITON	D46-5V	
12 CAGE, EXHAUST VALVE	DFF43-1	
13 EXHAUST VALVE	DFF43	DFF43-1S
14 ELL	D17-3	D17-3Y
15 GASKET, VALVE BLOCK	DFF25G	
16 VALVE BLOCK	DFF25	DFF25S
17 BALL, CERAMIC	D17-5C	
18 SPRING	DFF42	
19 SPRING RETAINER PLUG	DFF42-1	DFF42-1S
SNAP CUBE ASSY	DFF50Z	
20 BEARING	DFF23-1	
21 BEARING PIN	DFF23P	
22 HANGER	DFF23	DFF23S
23 WASHER	DFF23-5A	
24 SPRING	D24	
25 SNAP CUBE	DFF50	
26 RETAINING RING	D51	
27 HANGER PIN	DFF50-1	
CONTROL ASSY	D502Z	
28 PETCOCK VALVE	D45	D45S
29 TEE, TUBE	D32	
30 CONTROL TUBE	D501B	
31 SPRING	D501A	
32 CONTROL NEEDLE	D261	
33 SETSCREW	M20-5	
34 KNOB	D262	
35 NIPPLE	D54	

*Option replaces brass parts in first column with steel

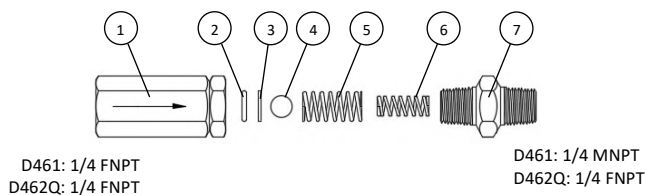
DFF1PZ does not include D502Z

DFF50Z and D502Z can be purchased individually



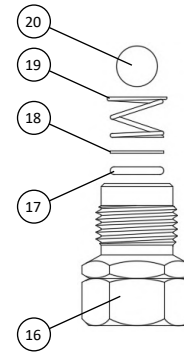
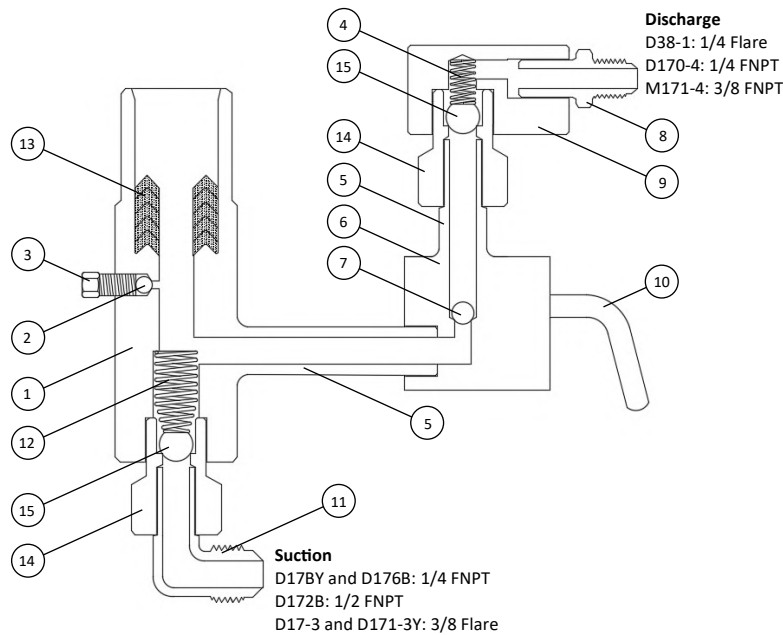
LINE CHECK VALVE	D461	D462Q
1 BODY / CAGE	D461B	D176BQ
2 O-RING, TEFLON™	M170-55T*	D170-5T*
3 RING	D461R	D177
4 BALL, CERAMIC	D17-5C	D17-6C
5 SPRING	D461S	D178
6 SPRING	D18-1Y	D462SQ
7 NIPPLE / BODY	D461A	D462BFQ

*Alternate materials: Buna-N, Viton™, Neoprene, EPDM



All images are for illustrative purposes. Actual product may differ.

DFF #2 PUMP: SUBASSEMBLIES CONTINUED



UPGRADE:
Resilient check valve improves sealing capability on low viscosity fluids such as methanol

PISTON DIA (IN)	1/4			3/8			3/8 HIGH PRESSURE			5/8		1	
	Standard	Y	Q	Standard	Y	Q	Standard	Y	Q	Y	Q	Standard	Y
FLUID END ASSY	D154Z1	D154Z1Y	D154Z1Q	D15Z1	D15Z1Y	D15Z1Q	D15A-12Z1	D15A-12Z1Y	D15A-12Z1Q	D151Z1Y	D151Z1Q	DFF158Z1	DFF158Z1Y
1 FLUID END BODY	D154	D154Y	D154Q	D15	D15Y	D15Q	D15A-12	D15A-12Y	D15A-12Q	D151Y	D151Q	DFF158	DFF158Y
2 BLEED BALL, TUNGSTEN	D17-3T	D17-3T	D17-3T	D17-3T	D17-3T	D17-3T	D17-4T	D17-4T	D17-4T	D17-3T	D17-3T	D17-3T	D17-3T
3 BLEED PLUG	D154Y-B	D154Y-B	D154Q-B	D154Y-B	D154Y-B	D154Q-B	D15C-12Y	D15C-12Y	D15C-12Q	D154Y-B	D154Q-B	D154Y-B	D154Y-B
4 DISCHARGE SPRING	D18-1Y	D18-1Y	D18-1Y	D18-1Y	D18-1Y	D18-1Y	D18-1Y	D18-1Y	D18-1Y	D18-1Y	D18-1Y	M181-1Y	M181-1Y
5 NIPPLE	-	-	-	-	-	-	D15B-12	D15B-12Y	D15B-12Q	-	-	DFF161-8Y	DFF161-8Y
6 DISCHARGE BLOCK	DFF160	DFF160Y	DFF160Q	DFF160	DFF160Y	DFF160Q	D160A12	D160A12Y	D160A12Q	DFF160Y	DFF160Q	DFF160-8	DFF160-8Y
7 PRIME BALL, CERAMIC	D17-4C	D17-4C	D17-4C	D17-4C	D17-4C	D17-4C	D17-4C*	D17-4C*	D17-4C*	D17-4C	D17-4C	D171-2C	D171-2C
7 PRIME BALL, TUNGSTEN	D17-4T*	D17-4T*	D17-4T*	D17-4T*	D17-4T*	D17-4T*	D17-4T	D17-4T	D17-4T	D17-4T*	D17-4T*	D171-2T*	D171-2T*
8 DISCHARGE ADAPTER	D38-1	-	-	D38-1	-	-	D38-1S	-	-	-	-	-	-
9 SQUARE ELL	D170-4	D170-4Y	D170-4Q	D170-4	D170-4Y	D170-4Q	D170-4	D170-4Y	D170-4Q	D170-4Y	D170-4Q	M171-4	M171-4Y
10 PRIME VALVE	D16-2Y	D16-2Y	D16-2Q	D16-2Y	D16-2Y	D16-2Q	D16-2Y	D16-2Y	D16-2Q	D16-2Y	D16-2Q	D16-2Y	D16-2Y
11 INLET ADAPTER	D17-3	D17-3Y*	-	D17-3	D17-3Y*	-	D17-3	D17-3Y*	-	D171-3Y*	-	D171-3Y*	D171-3Y*
12 SPRING	D17-1	D17-1	D17-1	D17-1	D17-1	D17-1	D17-1	D17-1	D17-1	D171-1	D171-1Q	D171-1	D171-1
PIN	-	-	-	-	-	-	-	-	-	-	-	DFF8-D	DFF8-D
PLUG, DISCHARGE	-	-	-	-	-	-	-	-	-	-	-	DFF160-8AY	DFF160-8AY
13 V-RING PACKING	HHHHH	BTBTB	VTVTV	HHHHH	BTBTB	VTVTV	XXX	XXX	XXX	BTBTB	VTVTV	HTH	BTB
PACKING, EPDM (B)	D124B*	D124B (3)	D124B*	D12B*	D12B (3)	D12B*	-	-	-	D121B (3)	D121B*	M121-8B*	M121-8B (2)
PACKING, BUNA-N (H)	D124H (5)	D124H*	D124H*	D12H (5)	D12H*	D12H*	-	-	-	D121H*	D121H*	M121-8H (2)	M121-8H*
PACKING, NEOPRENE (N)	D124N*	D124N*	D124N*	D12N*	D12N*	D12N*	-	-	-	D121N*	D121N*	M121-8N*	M121-8N*
PACKING, TEFLON™ (T)	D124T*	D124T (2)	D124T (2)	D12T*	D12T (2)	D12T (2)	-	-	-	D121T (2)	D121T (2)	M121-8T (1)	M121-8T (1)
PACKING, VITON™ (V)	D124V*	D124V*	D124V (3)	D12V*	D12V*	D12V (3)	-	-	-	D121V*	D121V (3)	M121-8V*	M121-8V*
ARAMID COMPOSITE	-	-	-	-	-	-	D12HP (3)	D12HP (3)	D12HP (3)	-	-	-	-
CHECK VALVE	D17Y	D17Y	D17Q	D17Y	D17Y	D17Q	-	-	-	D172Y	D172Q	D172Y	D172Y
14 CAGE	D17BY	D17BY	D17BQ	D17BY	D17BY	D17BQ	-	-	-	D172B	D172BQ	D172B	D172B
15 CHECK BALL, CERAMIC	D17-6C	D17-6C	D17-6C	D17-6C	D17-6C	D17-6C	-	-	-	D171-2C	D171-2C	D171-2C	D171-2C
15 CHECK BALL, TUNGSTEN	D17-6T*	D17-6T*	D17-6T*	D17-6T*	D17-6T*	D17-6T*	-	-	-	D171-2T*	D171-2T*	D171-2T*	D171-2T*
RESILIENT CHECK VALVE	D176ZYT*	D176ZYT*	D176ZQT*	D176ZYT*	D176ZYT*	D176ZQT*	D176ZYT	D176ZYT	D176ZQT	D172ZYT	D172ZQT	D172ZYT	D172ZYT
16 CAGE	D176B	D176B	D176BQ	D176B	D176B	D176BQ	D176B	D176B	D176BQ	D172B	D172BQ	D172B	D172B
17 O-RING, TEFLON™	D170-5T**	D170-5T**	D170-5T**	D170-5T**	D170-5T**	D170-5T**	D170-5T**	D170-5T**	D170-5T**	D171-8T**	D171-8T**	D171-8T**	D171-8T**
18 RING	D177	D177	D177	D177	D177	D177	D177	D177	D177	D173	D173	D173	D173
19 SPRING	D178	D178	D178	D178	D178	D178	D178	D178	D178	D174	D174	D174	D174
20 CHECK BALL, CERAMIC	D17-6C	D17-6C	D17-6C	D17-6C	D17-6C	D17-6C	D17-6C	D17-6C	D17-6C	D171-2C	D171-2C	D171-2C	D171-2C
20 CHECK BALL, TUNGSTEN	D17-6T*	D17-6T*	D17-6T*	D17-6T*	D17-6T*	D17-6T*	D17-6T*	D17-6T*	D17-6T*	D171-2T*	D171-2T*	D171-2T*	D171-2T*

*Optional equipment, please specify when ordering

**Alternate materials: Buna-N, Viton™, Neoprene, EPDM

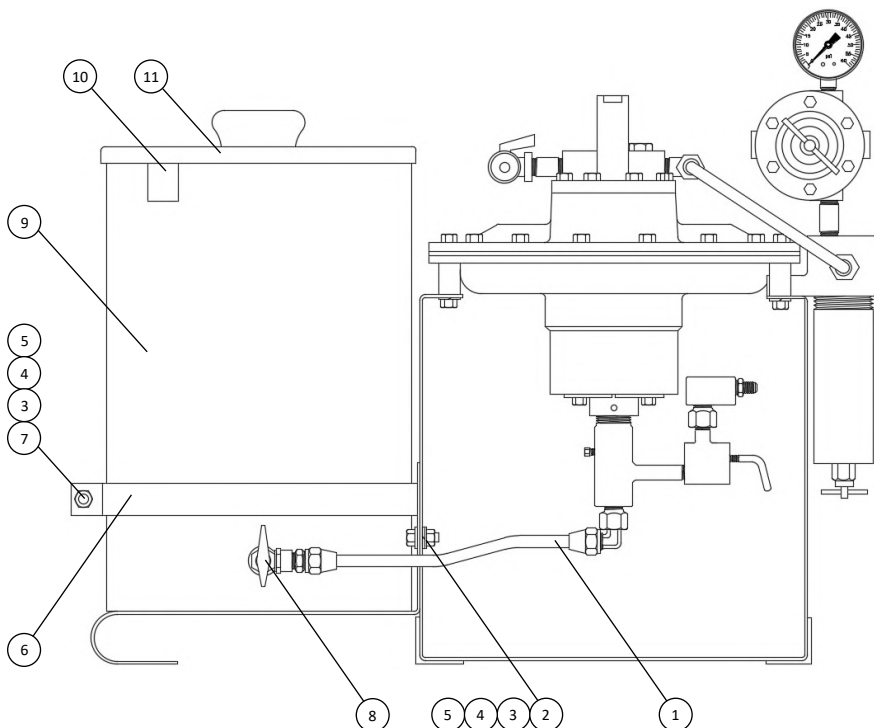
All images are for illustrative purposes. Actual product may differ.

DFF #1 PUMP: PARTS LIST

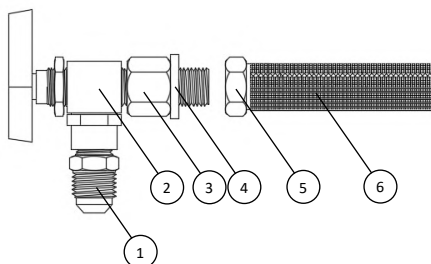
Includes all parts from DFF #2

DFF #1		
1	TUBE ASSY	D33
2	BOLT	DFF44-2
3	LOCK WASHER	D47-1L
4	WASHER	M56
5	NUT	D47-1A
6	BRACKET	D47H1
7	BOLT	D47-1C
TANK ASSY D48ZY		
8	TANK VALVE ASSY	D29
8	TANK VALVE ASSY	D29Y*
9	TANK	D48Y
10	GAUGE STICK	D49
11	TANK LID WITH KNOB	D48-1Y
NOT PICTURED		
	LEVEL SIGHT GAUGE	929-1-S*

*Optional equipment

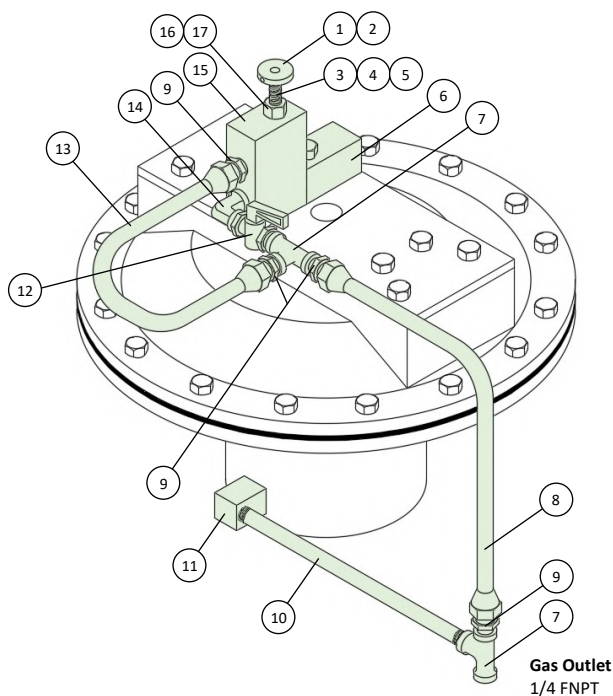


TANK VALVE ASSY	D29	D29Y
1	ADAPTER	D32-2
2	BALL VALVE	D29V
3	ADAPTER	D29A
4	GASKET	D28-8
5	NUT	D28-4Y
6	STRAINER	D28-3

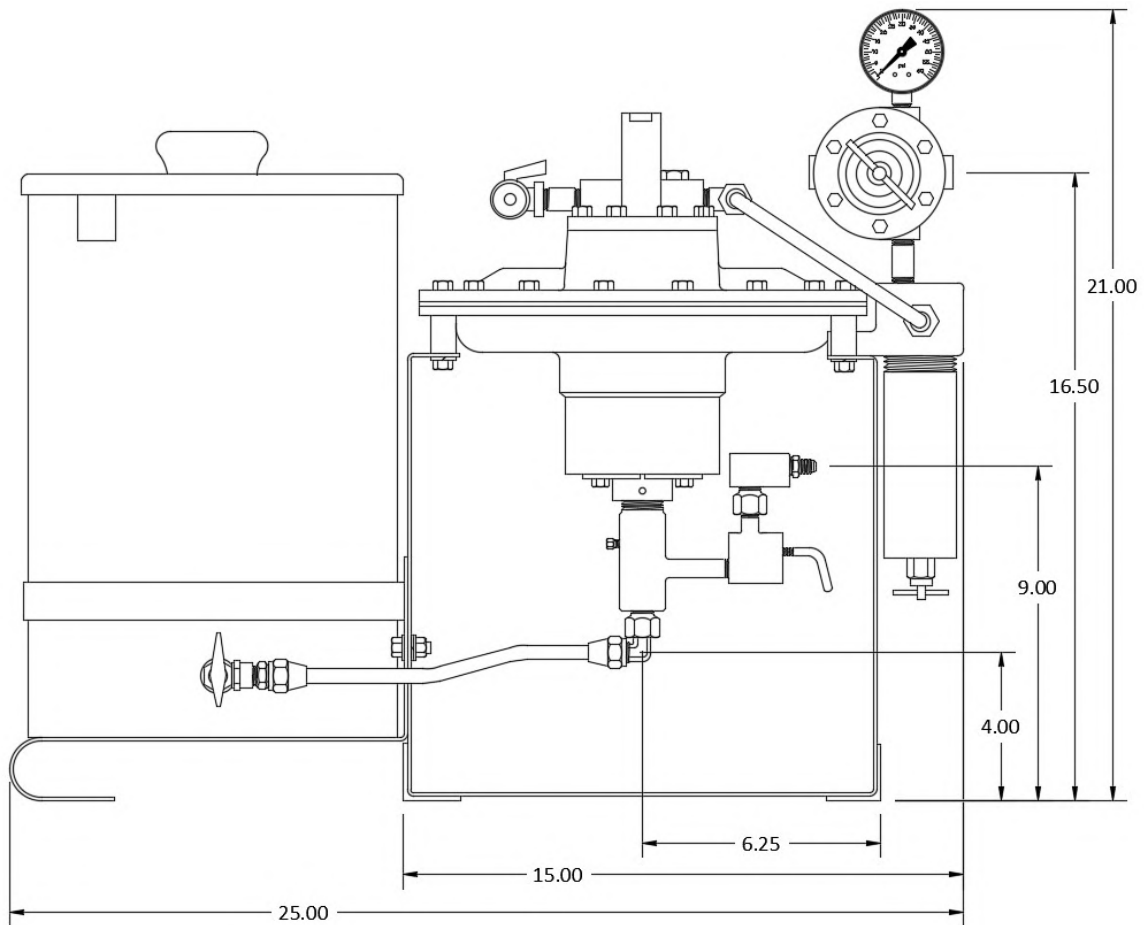
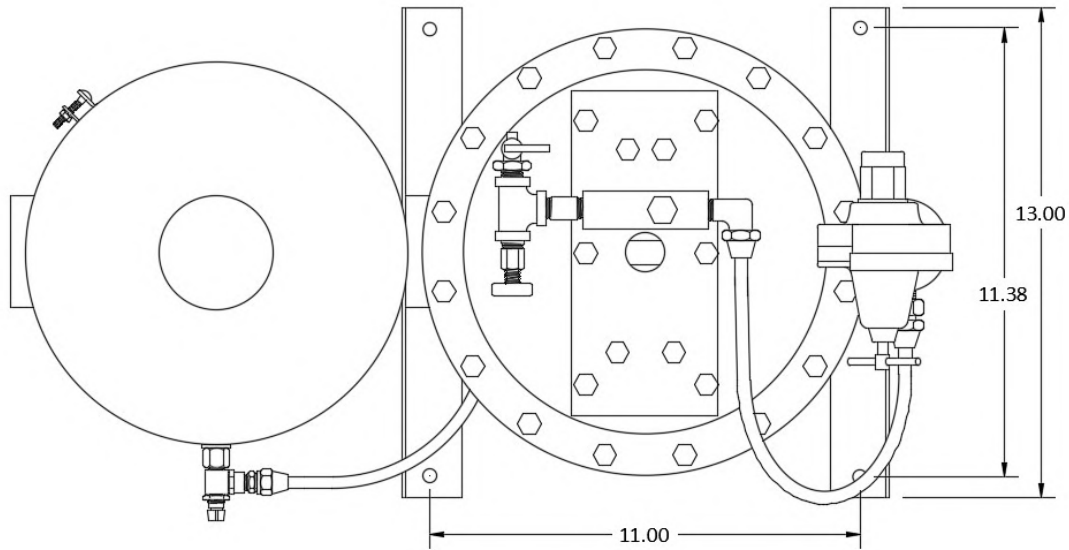


DFF OPTION: EXHAUST GAS RECOVERY

EXHAUST GAS RECOVERY	EG101
1	KNOB
2	SETSCREW
3	SPRING
4	NEEDLE
5	O-RING, VITON
6	INLET VALVE BLOCK
7	TEE
8	TUBE ASSY
9	ADAPTER
10	NIPPLE
11	ELL
12	PETCOCK
13	TUBE ASSY
14	ELL
15	VALVE BODY
16	GLAND NUT
17	O-RING, VITON



All images are for illustrative purposes. Actual product may differ.



Western Chemical Pumps, Inc.
603 South Kansas Avenue, Olathe, KS 66061
913 - 829 - 1888 | sales@westernchemicalpumps.com

Dimensions are in inches. Actual product may have variance in measurements.
All images are for illustrative purposes. Actual product may differ.

Western Chemical Pumps, Inc. reserves the right to make changes in specifications and features shown herein, or discontinue the product described at any time without notice or obligation. Contact your Western Chemical Pumps, Inc. distributor for the most current information.

ATOMIZING NOZZLES



These atomizing nozzles enhance the utility of Western's chemical pumps by dispersing the chemical precisely at the injection point. This expands the chemical's surface area, promoting better mixing and more efficient chemical utilization.

Western's chemical pumps administer chemicals rapidly with every piston stroke. This intermittent and rapid chemical injection maximizes the operation of Western's nozzles in atomizing the chemical.

For decades, Western Chemical Pumps atomizing injection nozzles have demonstrated reliable engineering and design, earning the trust of its users through rigorous testing and proven performance.

FEATURES

- ◆ Adjustable dial controlled injection pressure
- ◆ Functions optimally with the designed operation of Western's chemical pumps
- ◆ ANX model is designed to be used with "hot tap" type installations to allow removal for maintenance without impacting production
- ◆ Stainless steel is standard for improved reliability
- ◆ Efficient design for precision injection

WESTERNTM



AN MODEL

AN	-2	-3/4	PART NUMBER
↑	↑	↑	Model
AN			Atomizing Nozzle
			Material
	-2		Stainless Steel (standard)
	-2Q		316 Stainless Steel
			Connection
		-1	1" MNPT
		-3/4	3/4" MNPT

INSTALLATION AND OPERATION

The AN nozzle is designed to fit standard 1" and 3/4" internal pipe thread.

To start the atomizing nozzle, open the gauge cutoff valve (AN16-2) to the stop screw (1/2 turn). Loosen the prime valve (D16-2Y) (1 turn). Start the chemical pump. When all of the air has been bled from the line, close the prime valve. Pressure on the gauge will build up to line pressure plus atomizing differential pressure.

Atomizing differential pressure can be controlled by the control screw (AN2). Turn clockwise to decrease differential pressure and counterclockwise to increase differential pressure.

A differential pressure of approximately 800 psi over line pressure is required to lift the spray nozzle and create proper atomization. The nozzle can lift at lower differential pressures, but will produce less atomization.

De-activate the pressure gauge after proper operation of the nozzle by closing the gauge cutoff valve and opening the prime valve to release pressure trapped by the gauge.

AN	Standard	Q
1 BODY, 1" NPT	AN1S	AN1-1Q
1 BODY, 3/4" NPT	AN1-6S	AN1-6Q
2 CONTROL SCREW	AN2	AN2Q
3 O-RING, VITON TM	M170-55V	M170-55V
3 O-RING, TEFLON TM	M170-55T*	M170-55T*
4 SCREW	AN26	AN26Q
5 NOZZLE ASSY	AN3	AN3
6 SETSCREW	AN9	AN9
7 CAP	AN8Y	AN8Q
8 GAUGE CUTOFF VALVE	AN16-2	AN16-2Q
9 O-RING, VITON TM	D46-5V	D46-5V
9 O-RING, TEFLON TM	D46-5T*	D46-5T*
10 STOP SCREW	AN16-3	AN16-3Q
11 GAUGE, 0-3000 PSI	AN52	AN52Q
12 BLEED BLOCK	AN16S	AN16Q
13 PRIME VALVE	D16-2Y	D16-2Q
14 NIPPLE	AN54	AN54Q

*Optional equipment

OPTIONS & UPGRADES

Material: Upgrade to Q model for enhanced corrosion resistance

Seals: Standard FKM (VitonTM) O-rings, PTFE (TeflonTM) available

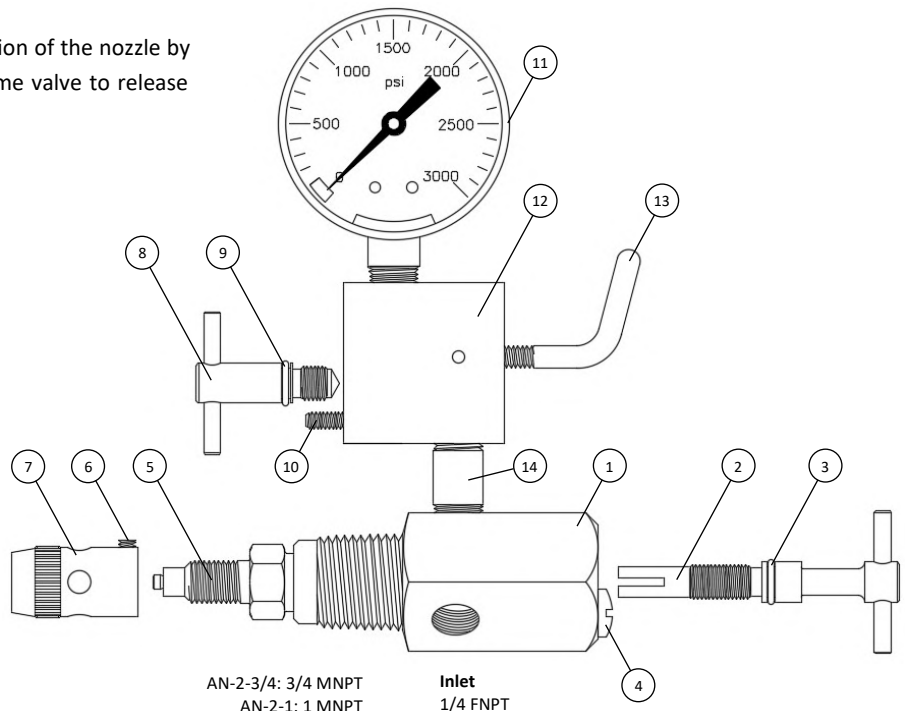
Other unique or special order materials are available to fit your needs. Please inquire with your Western Chemical Pumps, Inc. distributor. Specify desired options when placing order.

MAINTENANCE AND TROUBLESHOOTING

Periodically check operation of the nozzle by closing the prime valve (D16-2Y) and opening the gauge cutoff valve (AN16-2). If pressure fluctuates as the pump strokes, then the nozzle is operating properly. Weak or no pressure fluctuation indicates a possible blockage. Rotate the control screw (AN2) clockwise all the way in to lift the nozzle off its seat and allow a blockage to pass. Return the control screw back to the preferred operating position.

TIPS FOR BEST OPERATION

- Use cap (AN8Y) for injection into gas lines
- Remove cap (AN8Y) for injection into liquid lines
- Inject at 800 psi over line pressure for best atomization



All images are for illustrative purposes. Actual product may differ.

ANX MODEL

ANX	-2	-3/4	PART NUMBER
↑	↑	↑	Model
ANX			Atomizing Nozzle with Extension
			Material
	-2		Stainless Steel (standard)
	-2Q		316 Stainless Steel
			Extension Tube Length
	-12		12"
	-18		18"
	-24		24"
	-30		30"
	-36		36"
	-48		48"

OPTIONS & UPGRADES

Material: Upgrade to Q model for enhanced corrosion resistance

Seals: Standard FKM (Viton™) O-rings, PTFE (Teflon™) available

Other unique or special order materials are available to fit your needs. Please inquire with your Western Chemical Pumps, Inc. distributor. Specify desired options when placing order.

INSTALLATION AND OPERATION

The ANX nozzle is designed to fit standard 1" internal pipe thread.

To start the atomizing nozzle, open the gauge cutoff valve (AN16-2) to the stop screw (1/2 turn). Loosen the prime valve (D16-2Y) (1 turn). Start the chemical pump. When all of the air has been bled from the line, close the prime valve. Pressure on the gauge will build up to line pressure plus atomizing differential pressure.

A differential pressure of approximately 800 psi over line pressure is required to lift the spray nozzle and create proper atomization. The nozzle can lift at lower differential pressures, but will produce less atomization.

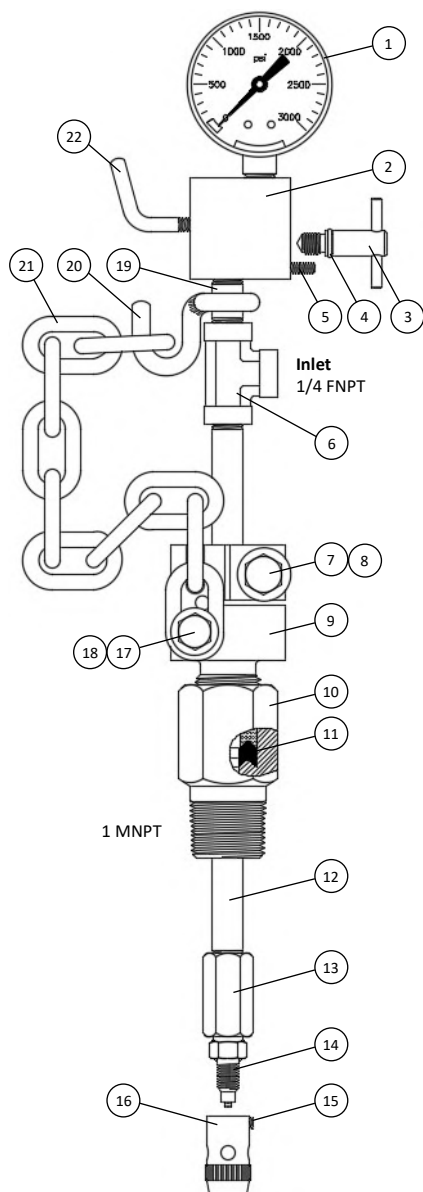
De-activate the pressure gauge after proper operation of the nozzle by closing the gauge cutoff valve and opening the prime valve to release pressure trapped by the gauge.

MAINTENANCE AND TROUBLESHOOTING

Periodically check operation of the nozzle by closing the prime valve (D16-2Y) and opening the gauge cutoff valve (AN16-2). If pressure fluctuates as the pump strokes, then the nozzle is operating properly. Weak or no pressure fluctuation indicates a possible blockage.

TIPS FOR BEST OPERATION

- Use cap (AN8Y) for injection into gas lines
- Remove cap (AN8Y) for injection into liquid lines
- Inject at 800 psi over line pressure for best atomization



ANX	Standard	Q		Standard	Q
1 GAUGE, 0-3000 PSI	AN52	AN52Q	12 EXTENSION TUBE, 18"	AN21**	AN21Q**
2 BLEED BLOCK	AN16S	AN16Q	13 COUPLING	AN20	AN20Q
3 GAUGE CUTOFF VALVE	AN16-2	AN16-2Q	14 NOZZLE ASSY	AN3S	AN3S
4 O-RING, VITON™	D46-5V	D46-5V	15 SETSCREW	AN9	AN9
4 O-RING, TEFLON™	D46-5T*	D46-5T*	16 CAP	AN8Y	AN8Q
5 STOP SCREW	AN16-3	AN16-3Q	17 CAP SCREW	AN9-1	AN9-1Q
6 TEE	AN22	AN22Q	18 WASHER	AN9-1A	AN9-1AQ
7 CAP SCREW	AN9-2	AN9-2Q	19 NIPPLE	AN54	AN54Q
8 WASHER	AN9-2A	AN9-2AQ	20 SAFETY HOOK	AN25	AN25
9 SPECIAL CLAMP	AN19	AN19Q	21 SAFETY CHAIN	AN27	AN27
10 STUFFING BOX	AN18	AN18Q	22 PRIME VALVE	D16-2Y	D16-2Q
11 V-RING PACKING	AN12	AN12			

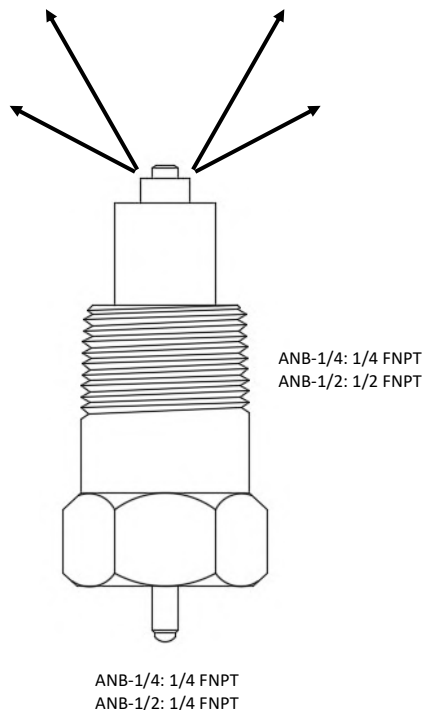
*Optional equipment

**Different lengths available, specify when ordering

All images are for illustrative purposes. Actual product may differ.

ANB MODEL

ANB	-1/4	PART NUMBER
↑ ANB	↑	Model Atomizing Nozzle Tip Only
		Connection
	-1/4	1/4" MNPT
	-1/2	1/2" MNPT



FEATURES

- All parts made from stainless steel
- Increases injected chemical surface area to aid in mixing and chemical effectiveness
- Increases energy released at injection point to promote atomization of liquid into gas
- The ANB nozzle is designed to fit standard 1/4" and 1/2" internal pipe thread.

TIPS FOR BEST OPERATION

- Functions best with a Western positive displacement pump (MA, MT, DFF, MH) that provides rapid intermittent injection
- Performance improves at higher flow rates
- Connect nozzles as close to the main flow stream as possible
- A differential pressure of approximately 800 psi over line pressure is required to lift the spray nozzle and create proper atomization. The nozzle can lift at lower differential pressures, but will produce less atomization.
- Use rigid tubing to the spray nozzle to prevent pressure loss
- Keep injection point up hill from pump to allow gas bubbles to pass thru the line

Western Chemical Pumps, Inc.
603 South Kansas Avenue, Olathe, KS 66061
913 - 829 - 1888 | sales@westernchemicalpumps.com

All images are for illustrative purposes. Actual product may differ.

Western Chemical Pumps, Inc. reserves the right to make changes in specifications and features shown herein, or discontinue the product described at any time without notice or obligation. Contact your Western Chemical Pumps, Inc. distributor for the most current information.

Since 1947, Western Chemical Pumps, Inc. has been a trusted name in the oil and gas industry and has emerged as a leader for chemical injection pumps. Our products are engineered with precision, ensuring the utmost accuracy in dosing chemicals for your industrial processes. Our commitment to efficiency means that you can count on our pumps to optimize your operations, saving you both time and resources. We understand the importance of reliability in your industry, and that's why our pumps are built to last, providing consistent performance that minimizes downtime and maintenance costs. Choose Western Chemical Pumps, for precision, efficiency, and reliability in every pump we deliver.

Chemical injection pumps can significantly enhance production by delivering a diverse range of chemicals. Their utility goes beyond the chemical applications listed below, encompassing a wide spectrum of potential chemical solutions.

- ◆ Hydrate Prevention
- ◆ Corrosion Inhibitors
- ◆ Surfactants
- ◆ Scale Inhibitors
- ◆ Demulsifiers
- ◆ Biocides
- ◆ Drag-Reducing Agents
- ◆ H₂S Scavengers
- ◆ Gelling Agents
- ◆ Other Chemicals



CHEMICAL INJECTION PUMPS

Western Chemical Pumps, Inc. is ready to meet your chemical injection requirements. Our pumps can be customized to meet your specific demands. Featuring a selection of unique fluid end materials, a variety of seal materials, and many customization options and enhancements, we are fully equipped to provide the ideal solution you seek.

- ◆ Gas powered pumps
- ◆ Electric motor powered pumps
- ◆ Beam powered pumps
- ◆ Atomizing nozzles

CONTACT US

Western Chemical Pumps, Inc.
603 South Kansas Avenue, Olathe, KS 66061

WESTERNCHEMICALPUMPS.COM
Email: sales@westernchemicalpumps.com
Phone: 913 - 829 - 1888